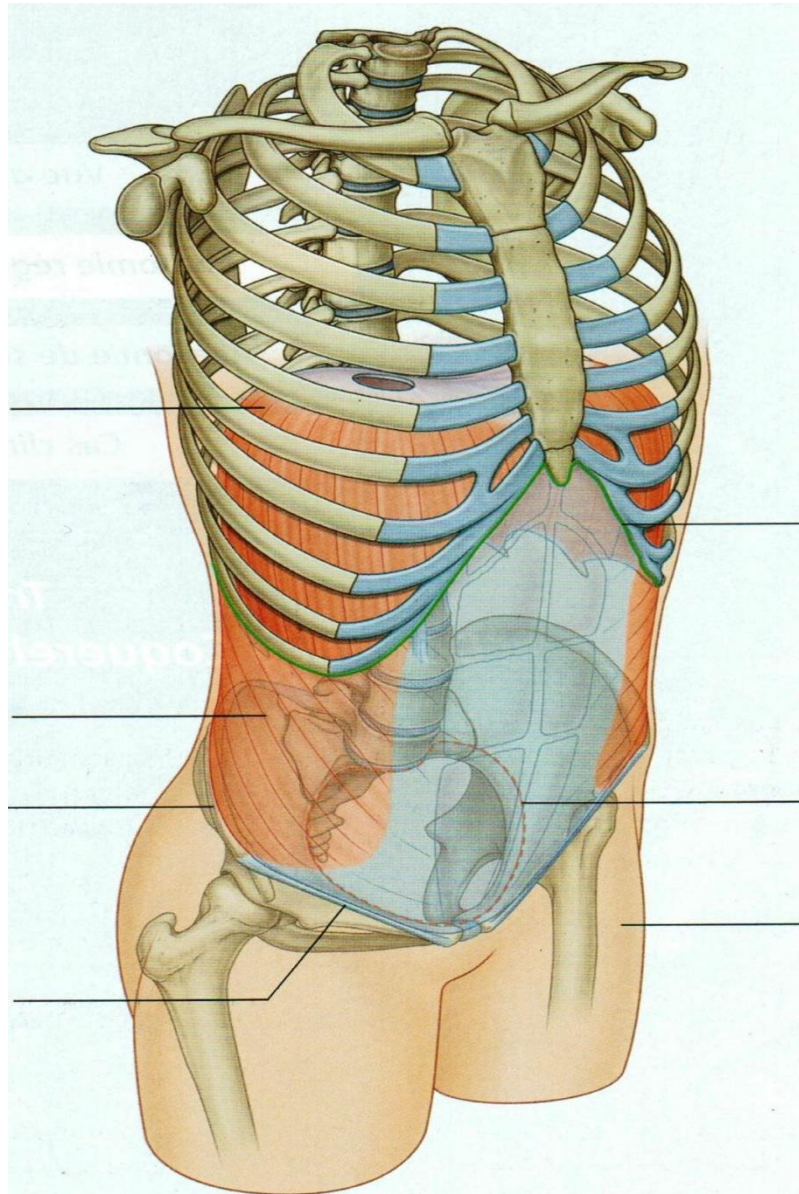
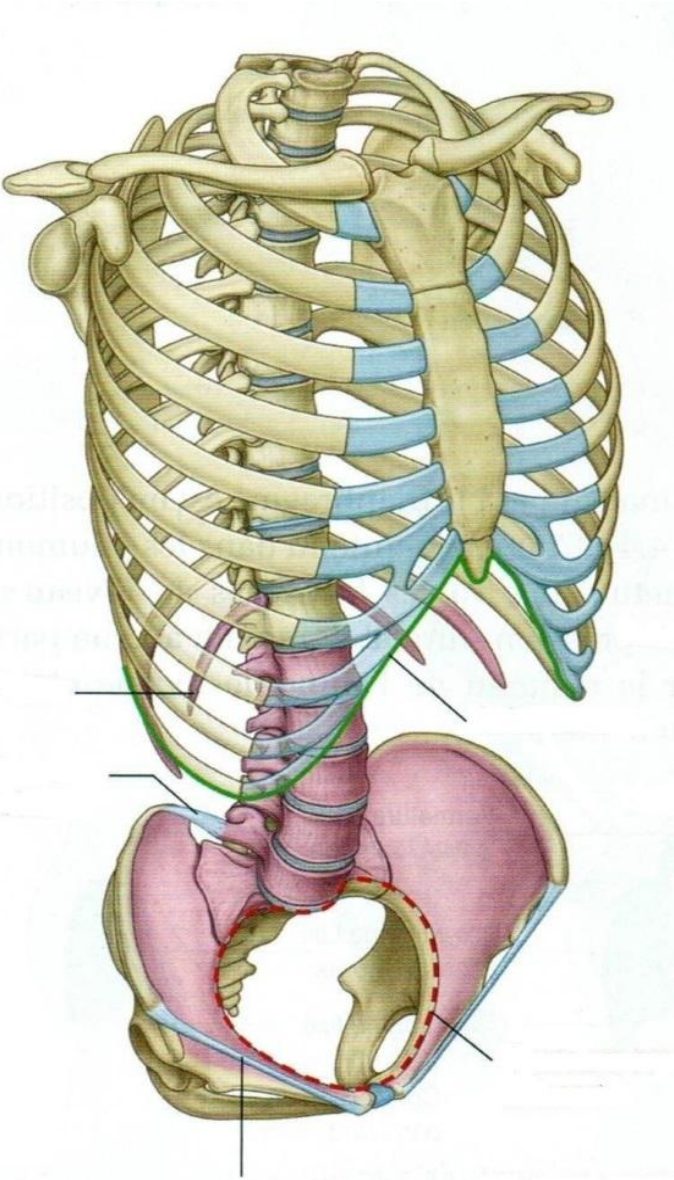


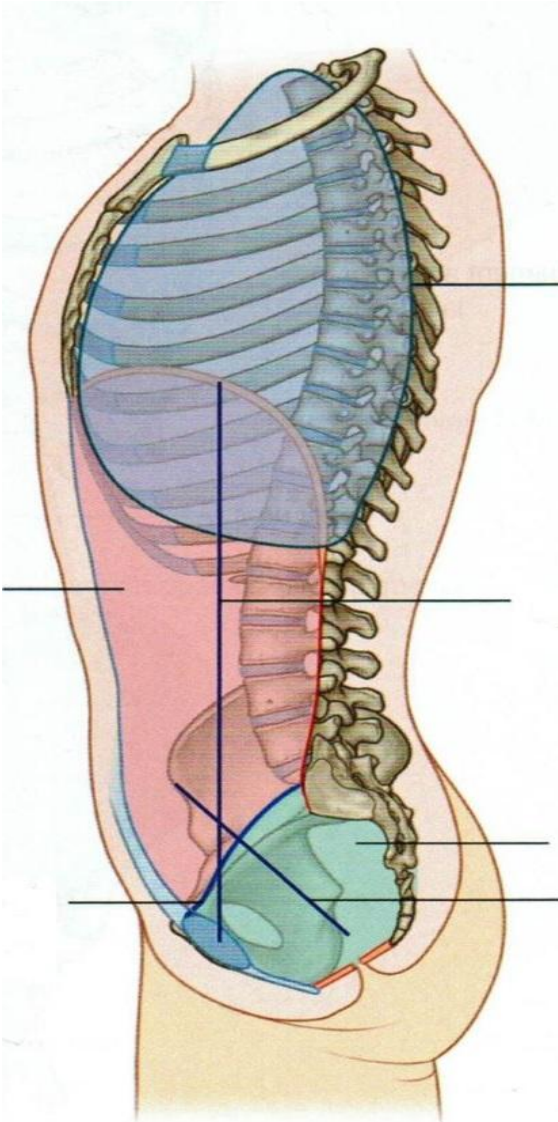
L' ABDOMEN



Ostéologie (limite post)

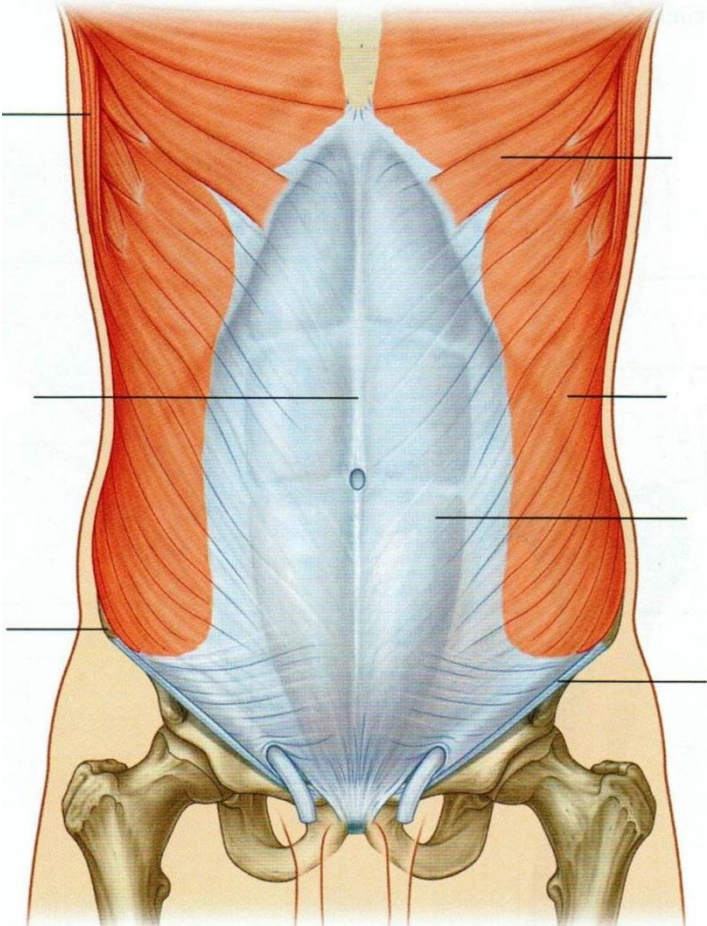


cavité abdominale

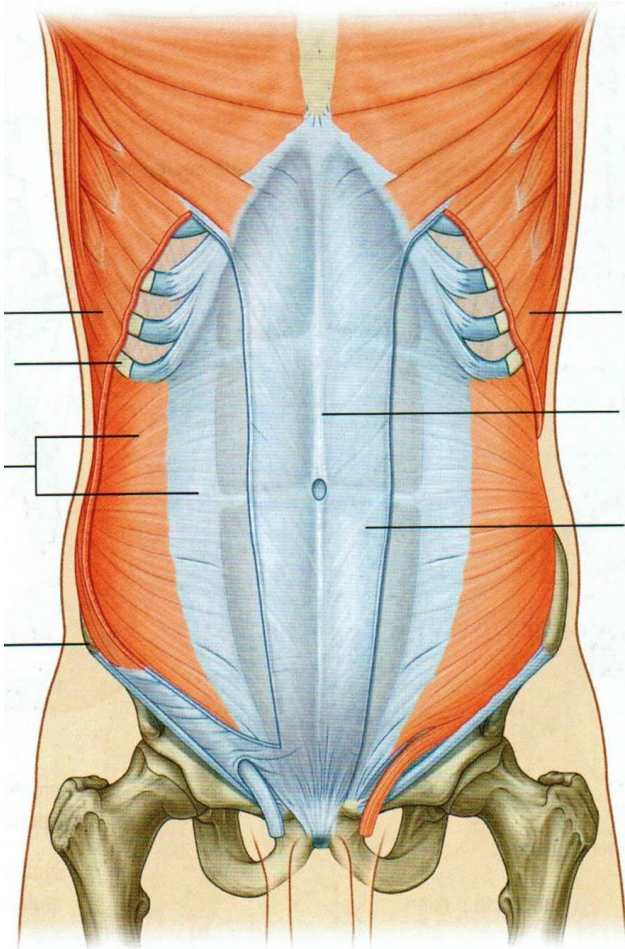


Myologie

oblique externe



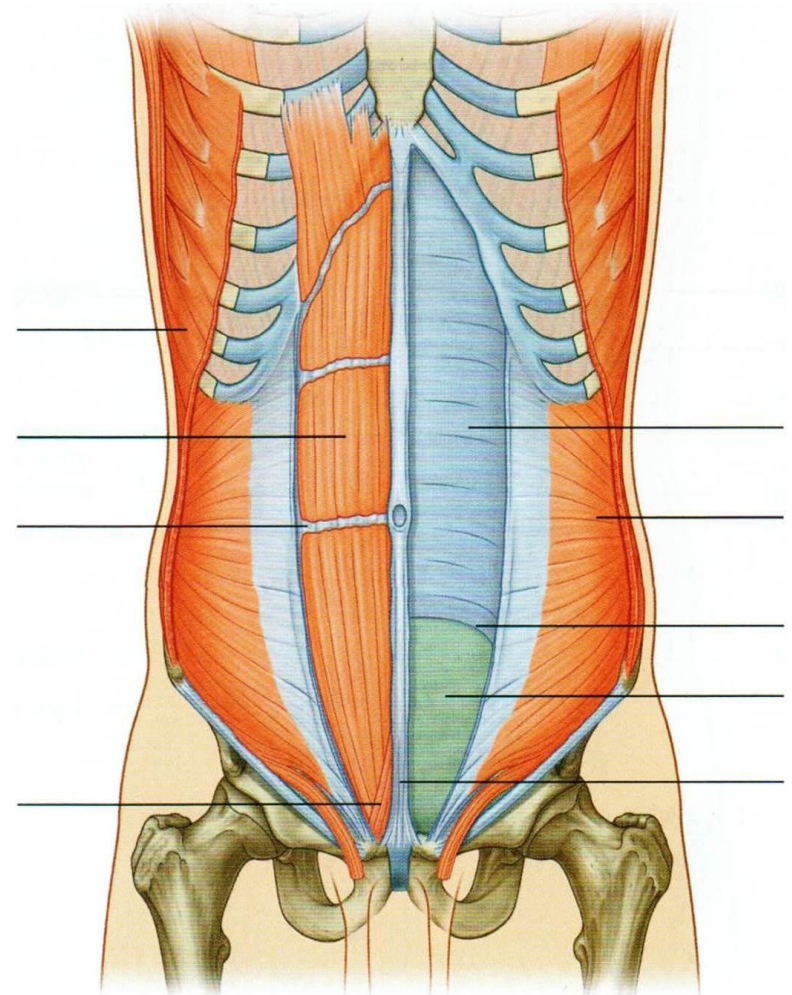
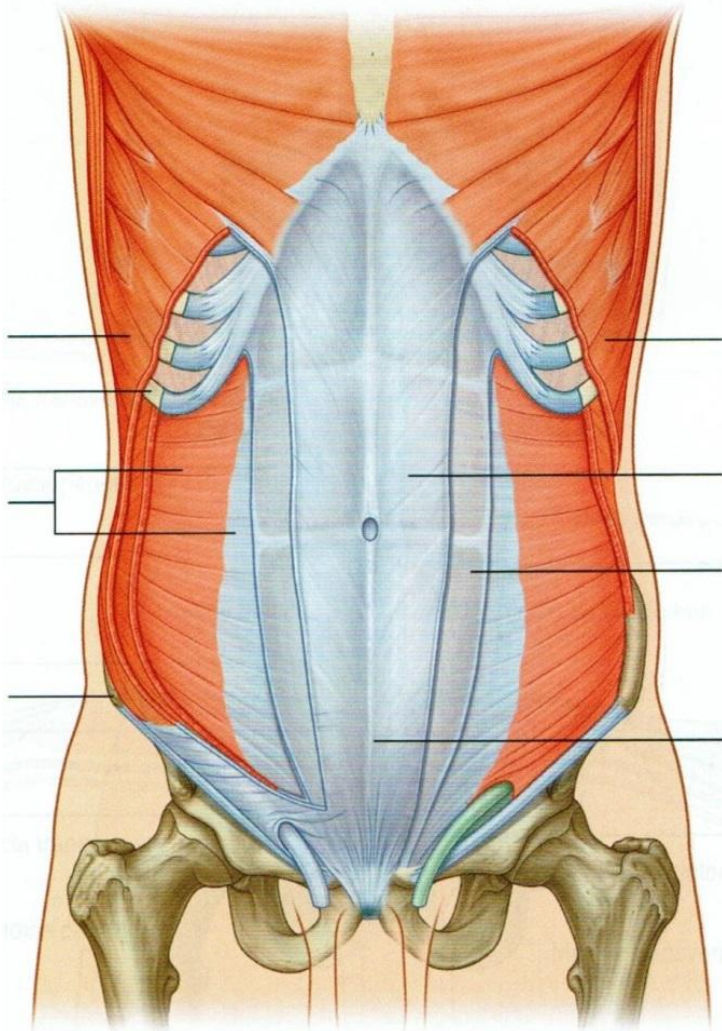
oblique interne



Myologie

transverse

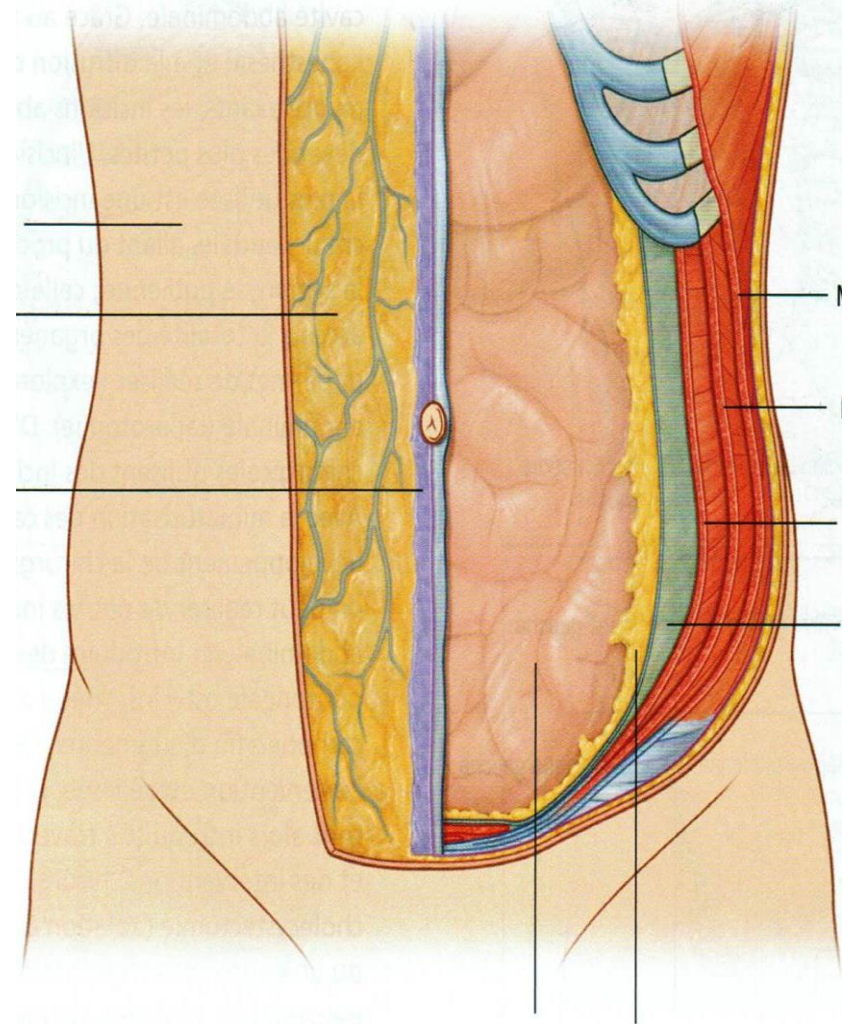
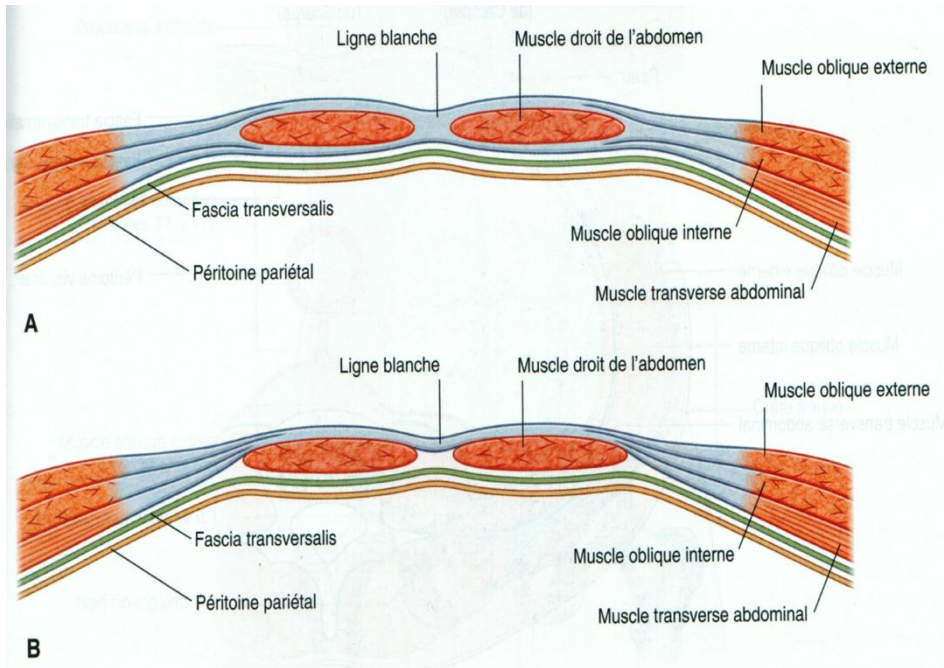
droit et pyramidal



Myologie

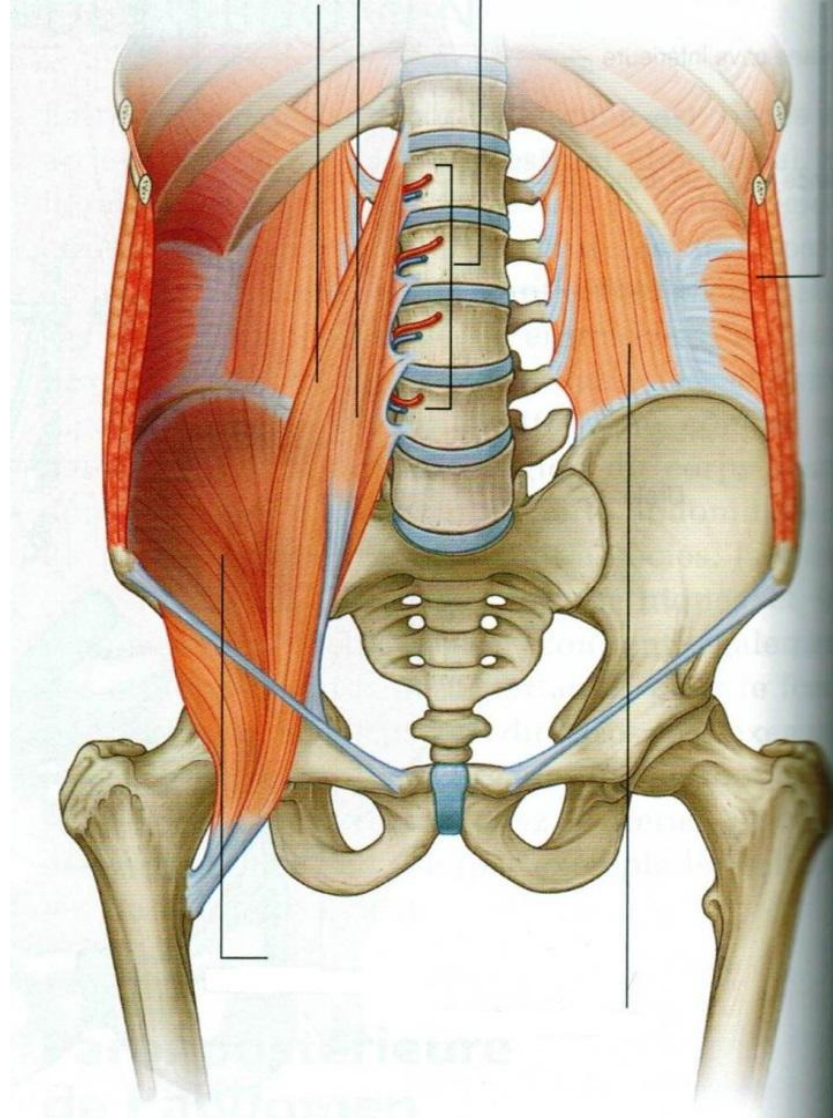
coupes transversales

feuilletets de la paroi



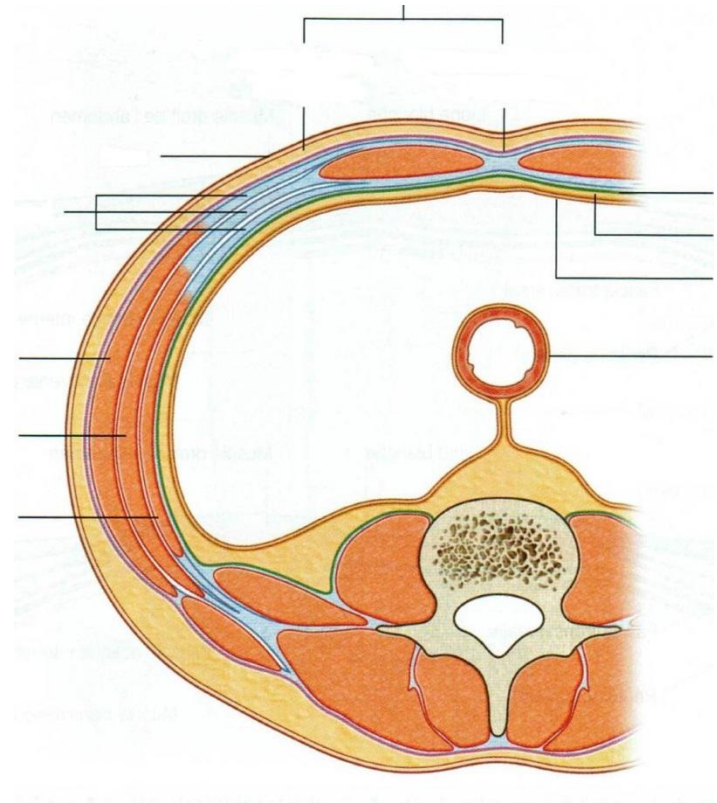
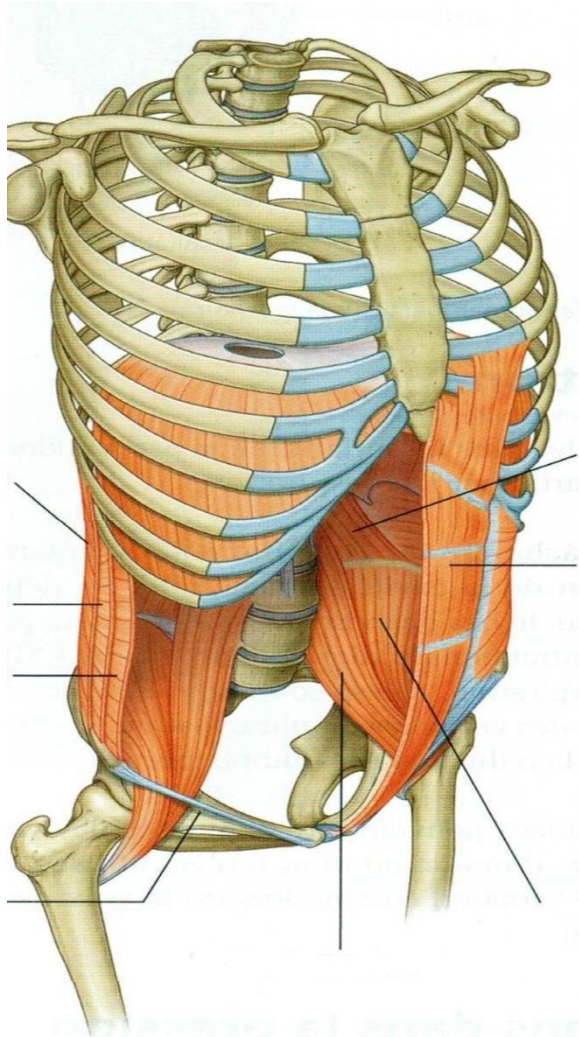
Myologie

paroi postérieure

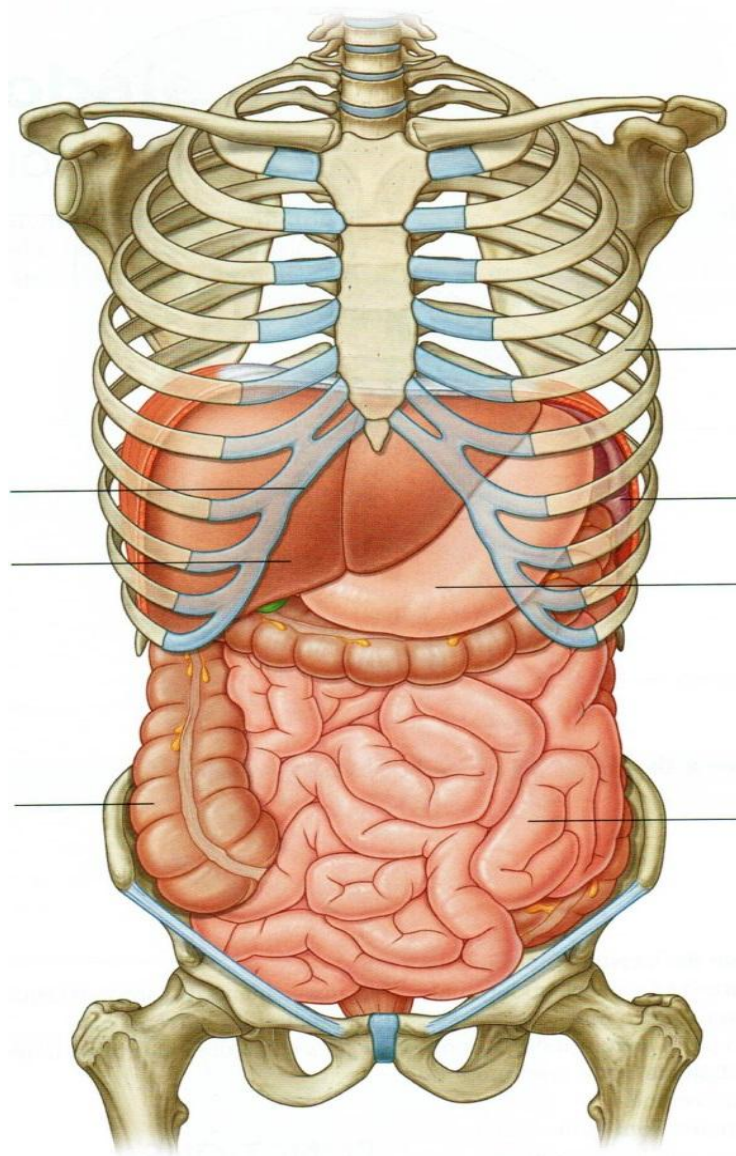


Myologie

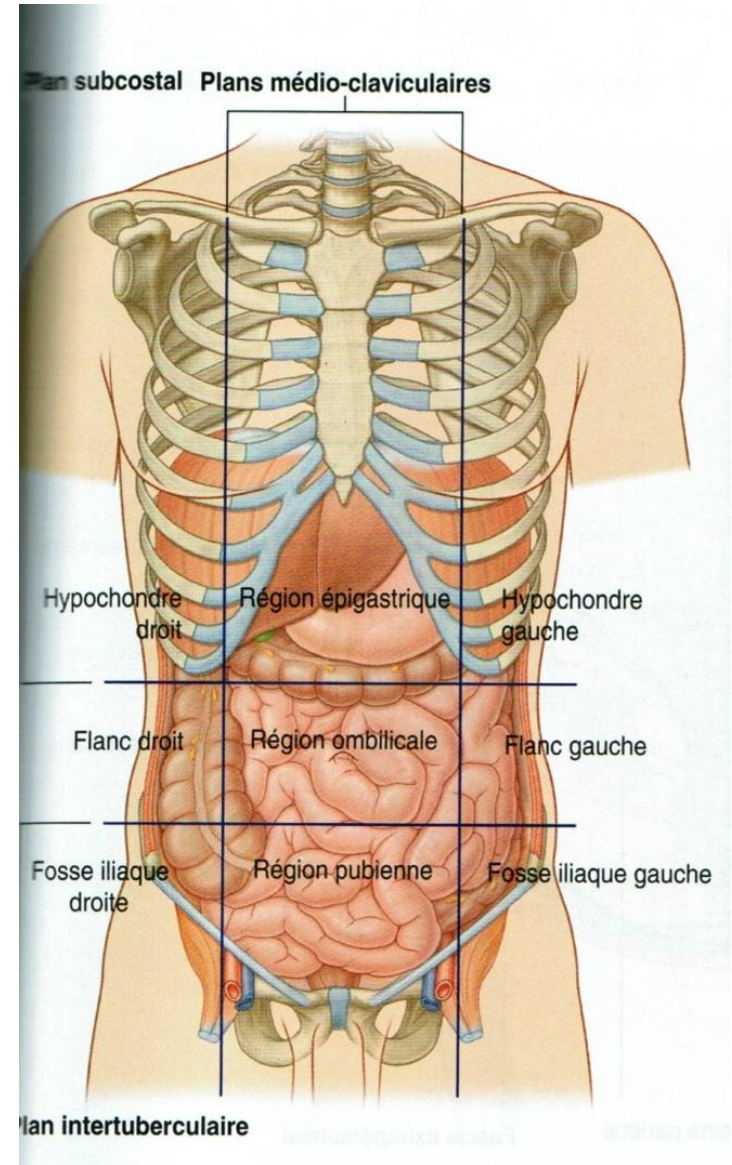
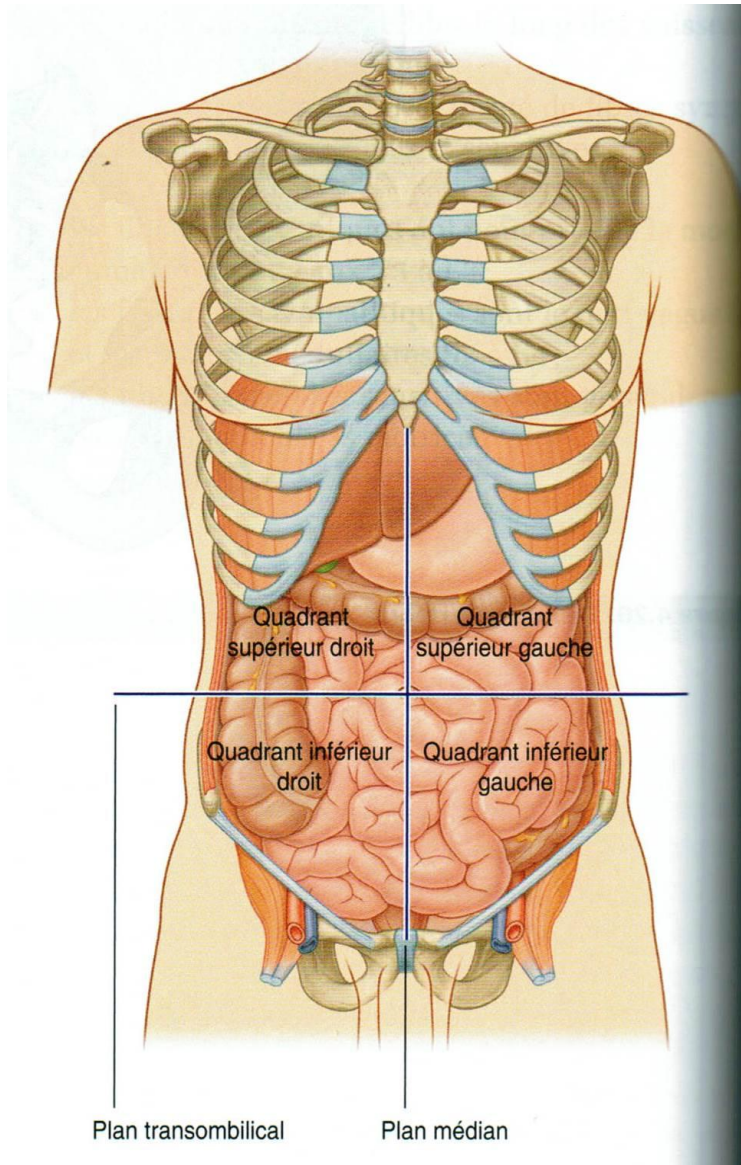
ensemble de la paroi abdominale



Viscères

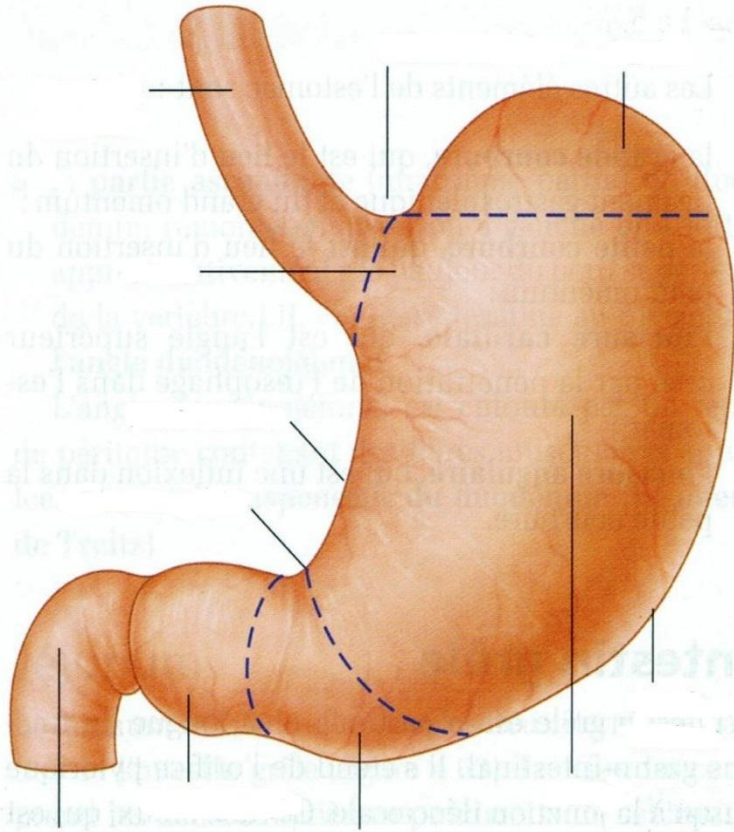


Viscères repères

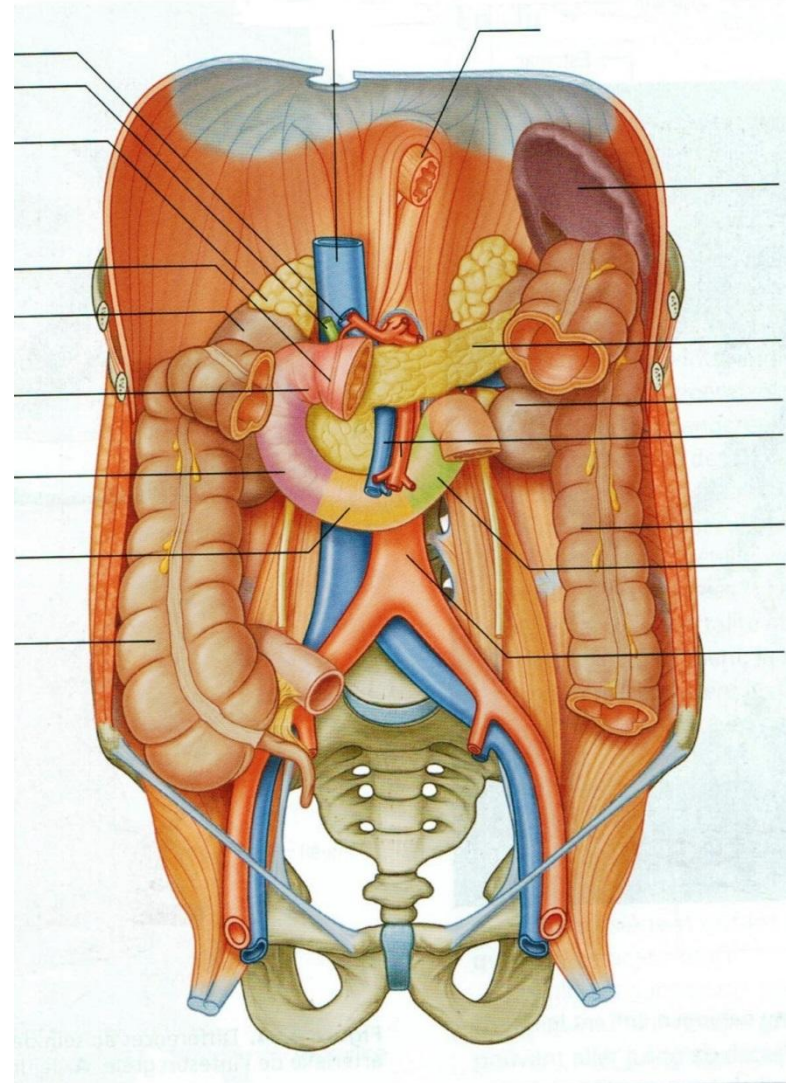


Viscères

estomac

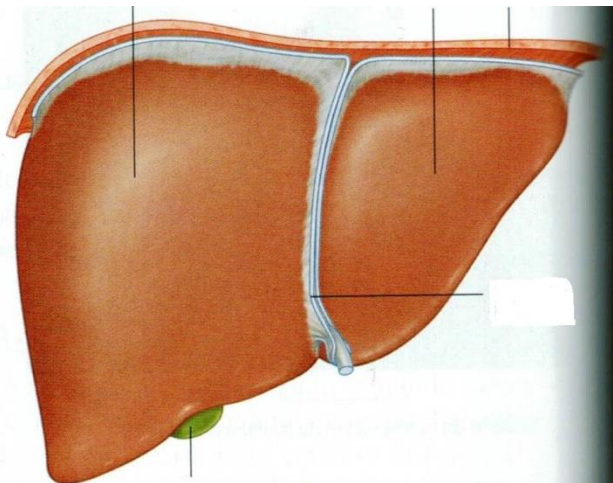


IG : duodénum

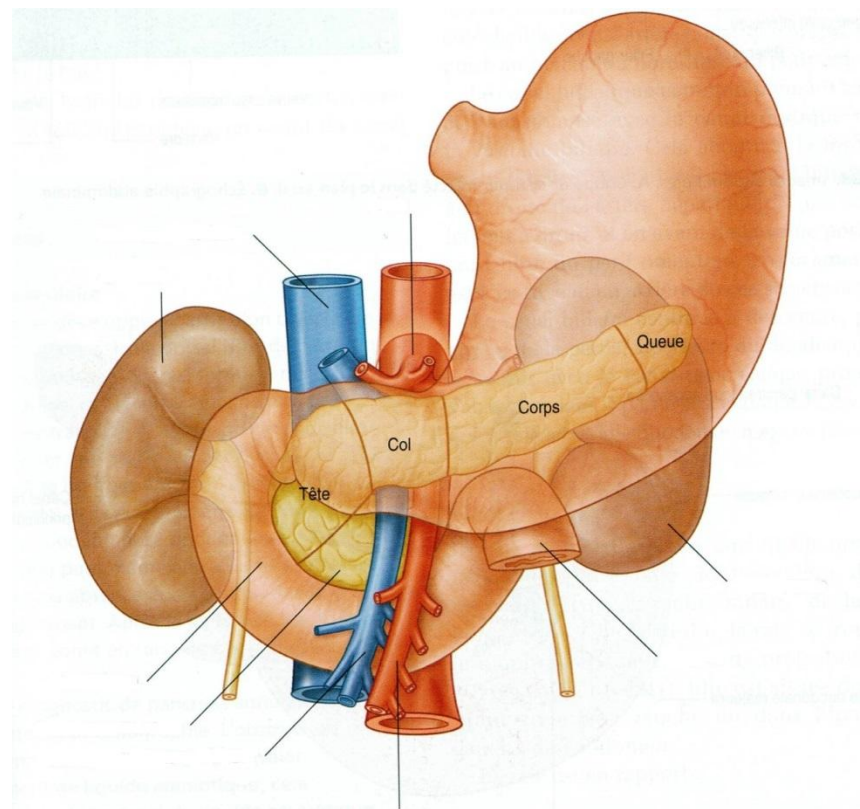


Viscères

foie

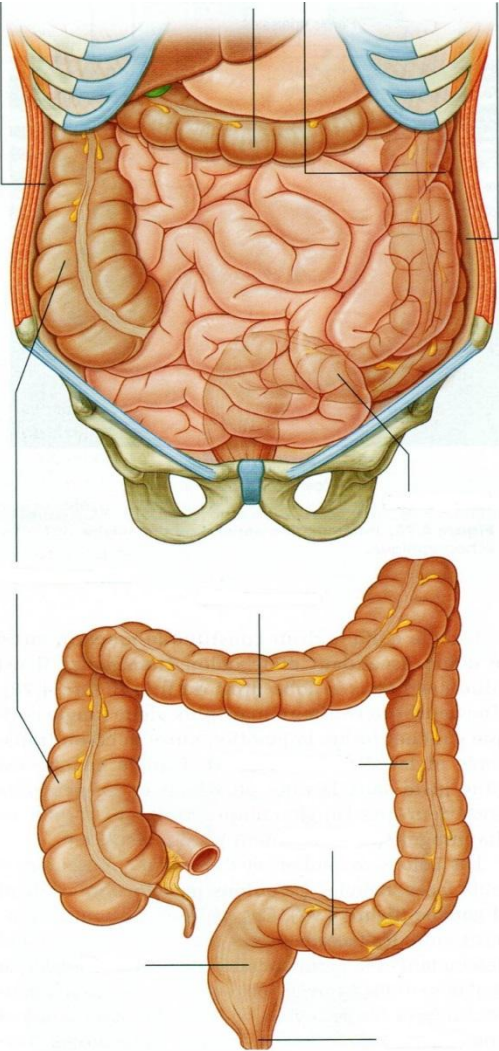


pancréas

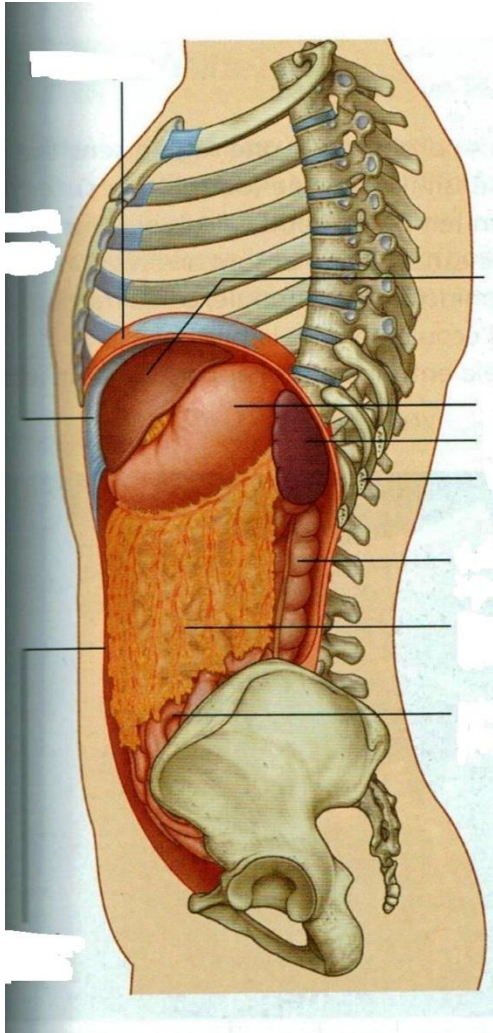


Viscères

colon

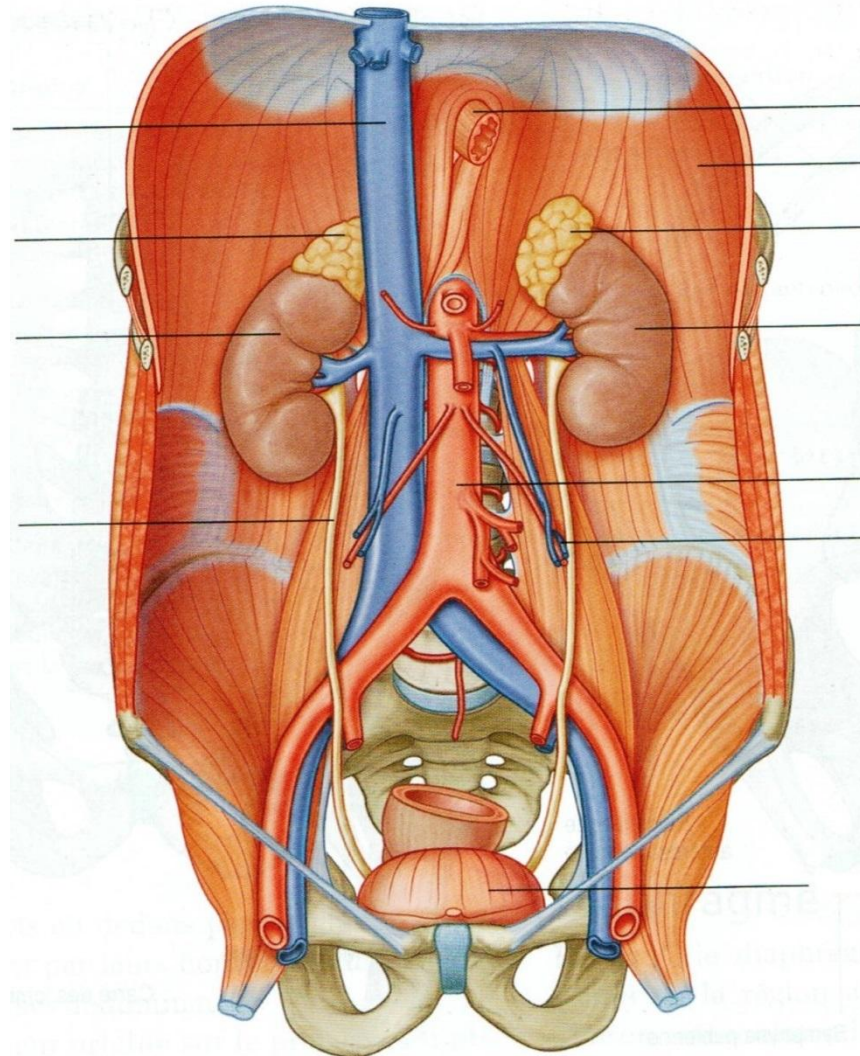


rate



Viscères

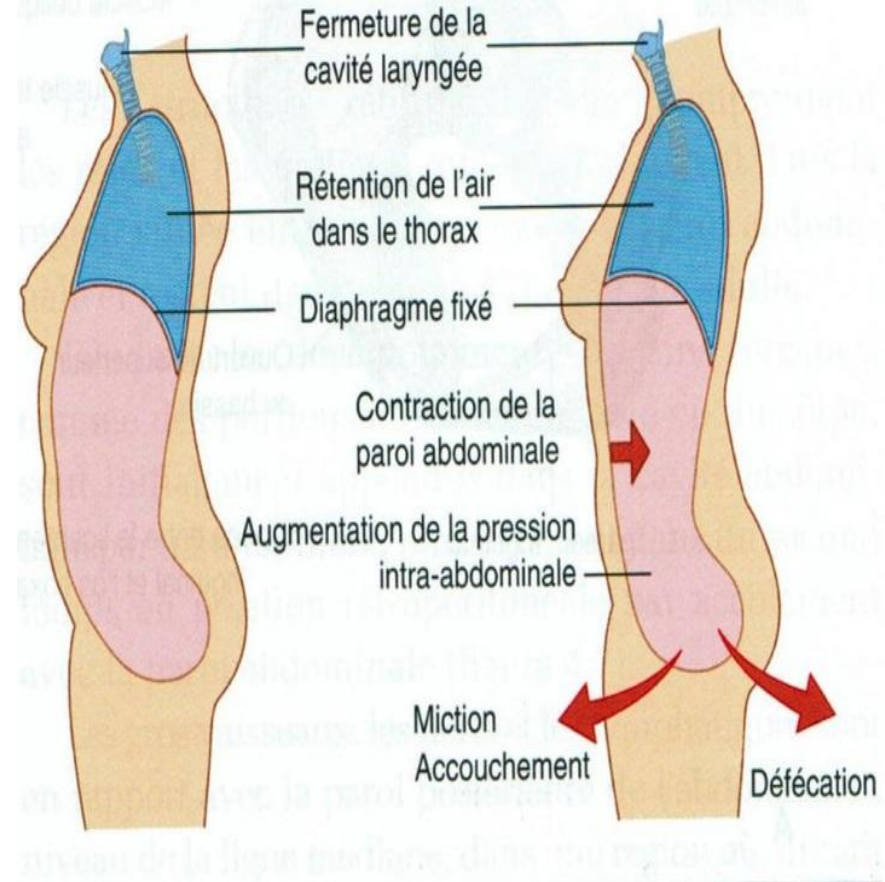
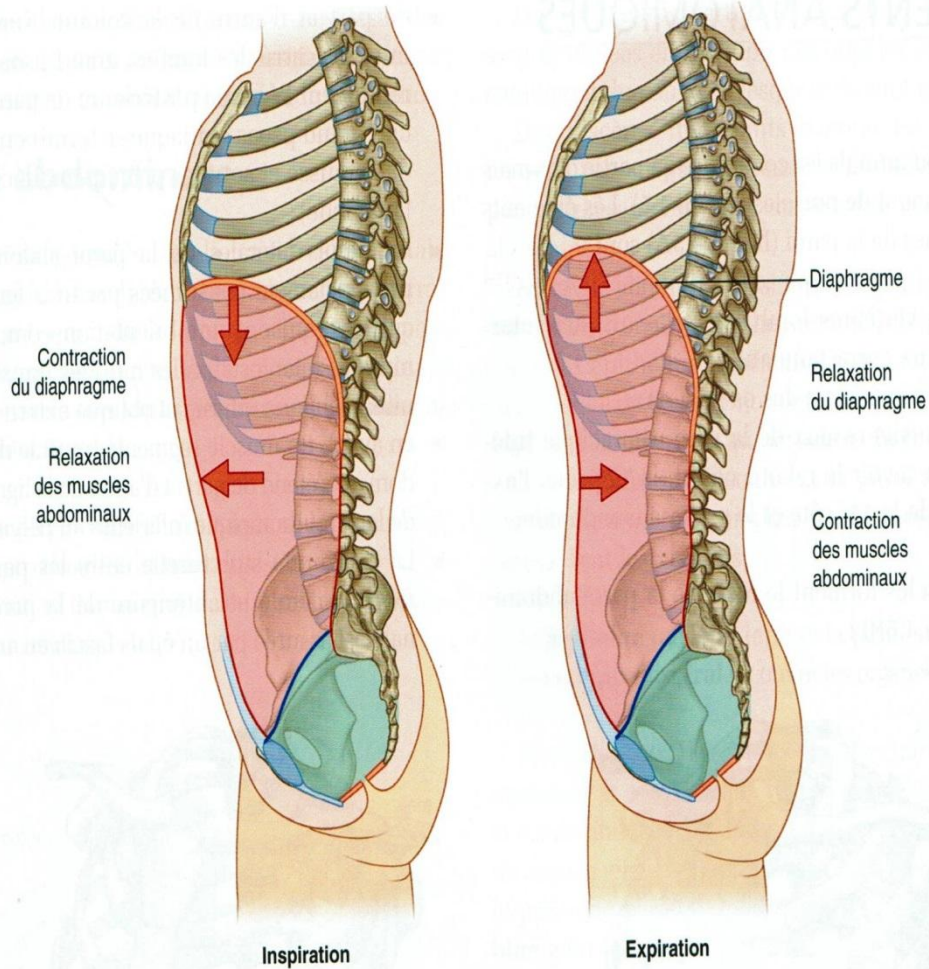
reins, uretères, glandes surrénales



Abdomen

respiration

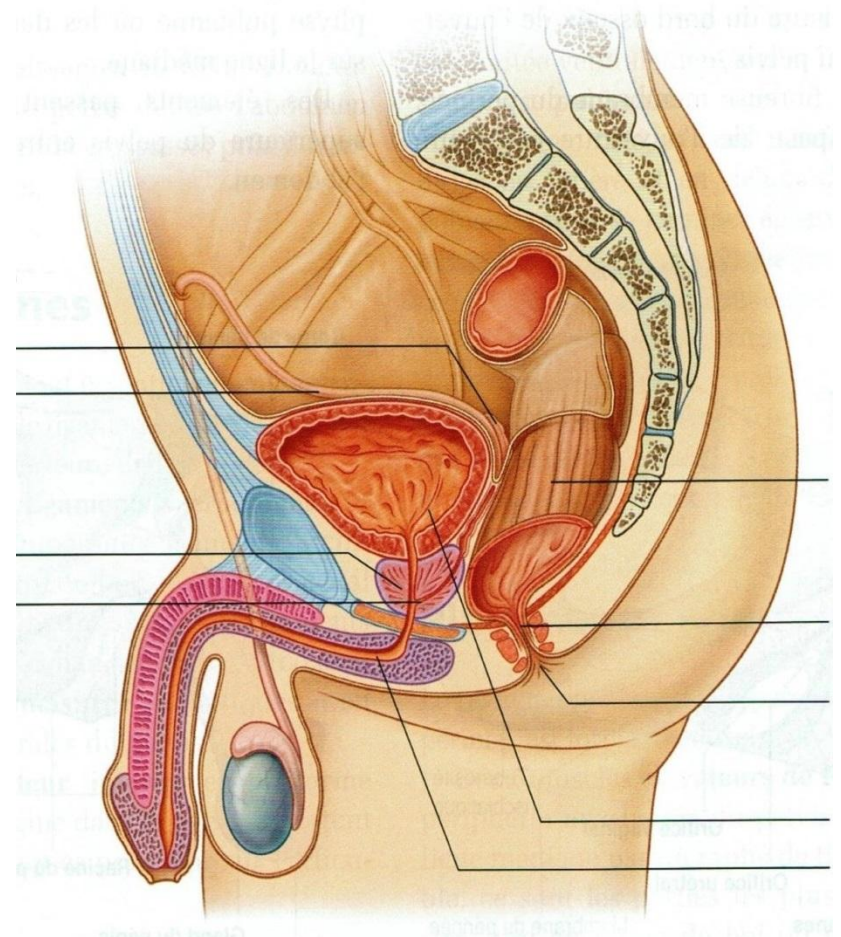
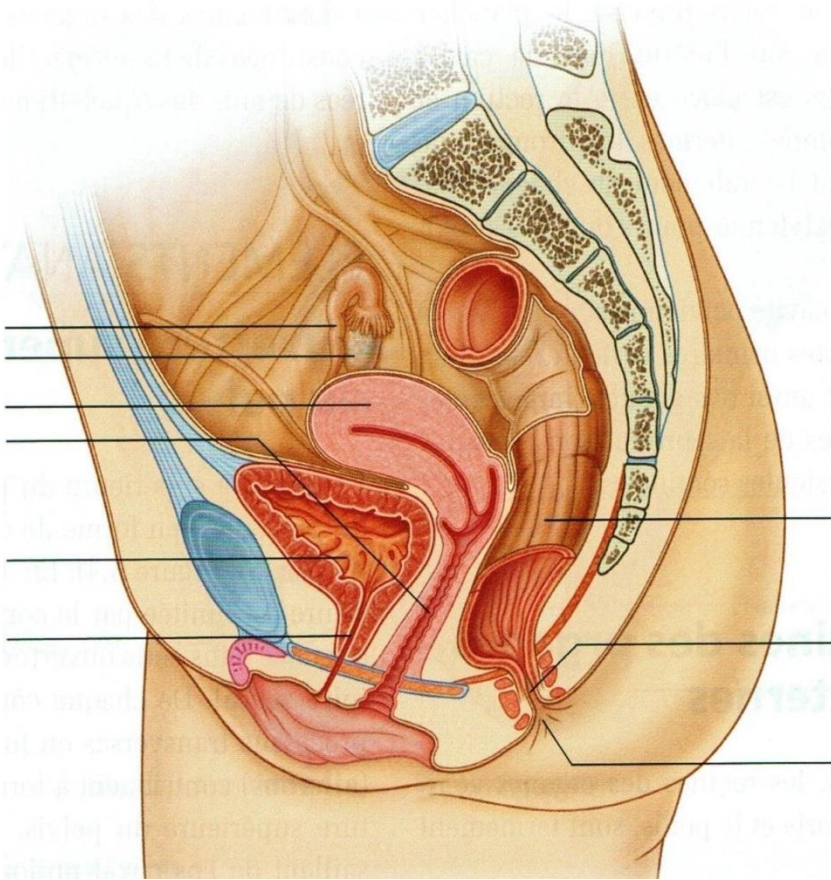
pression



PERINEE

périnée féminin

périnée masculin



PERINEE

plancher périnéale féminin

plancher périnéale masculin

