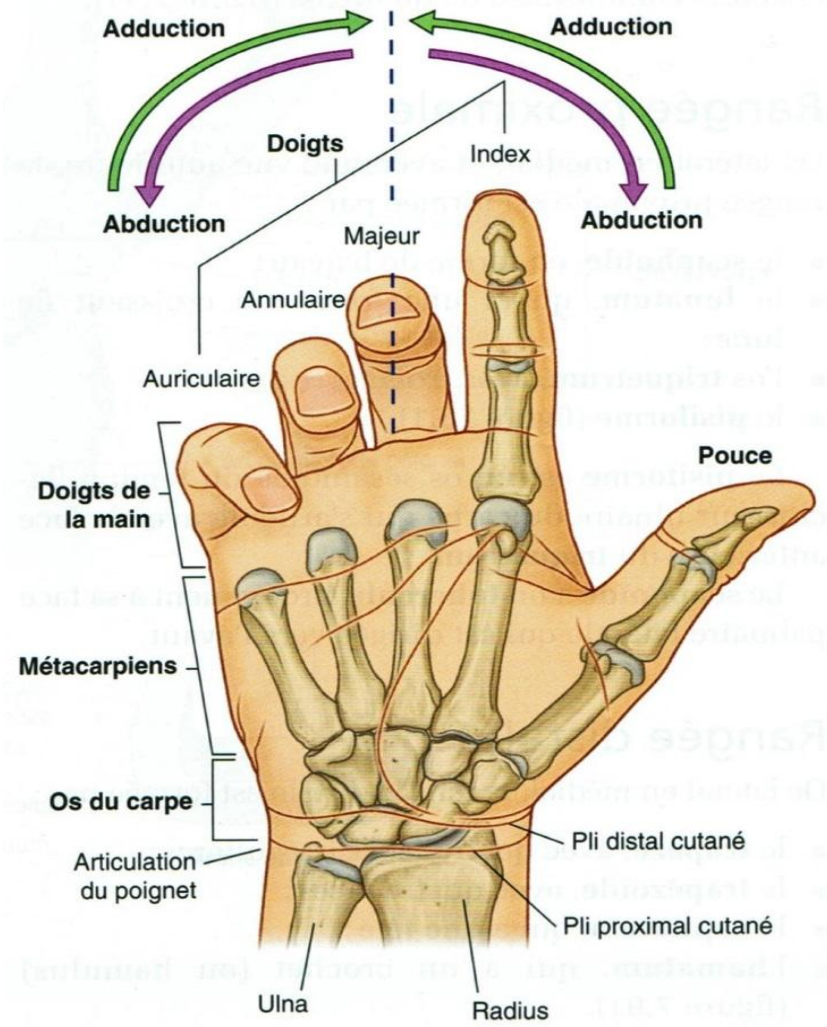
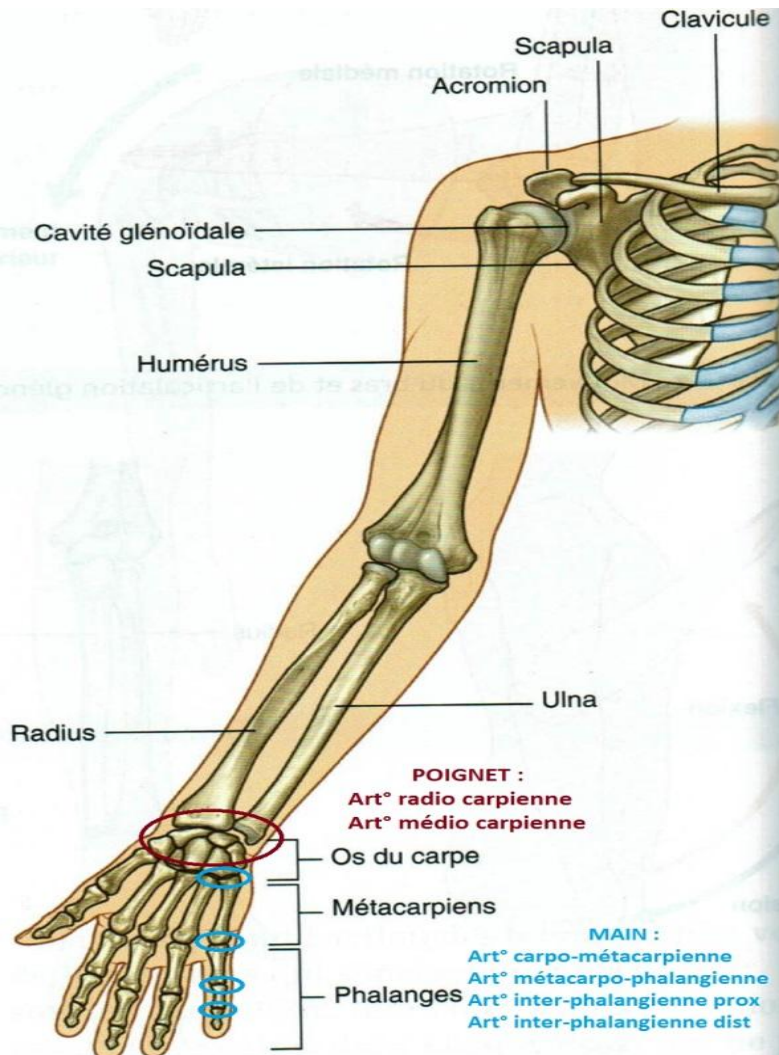


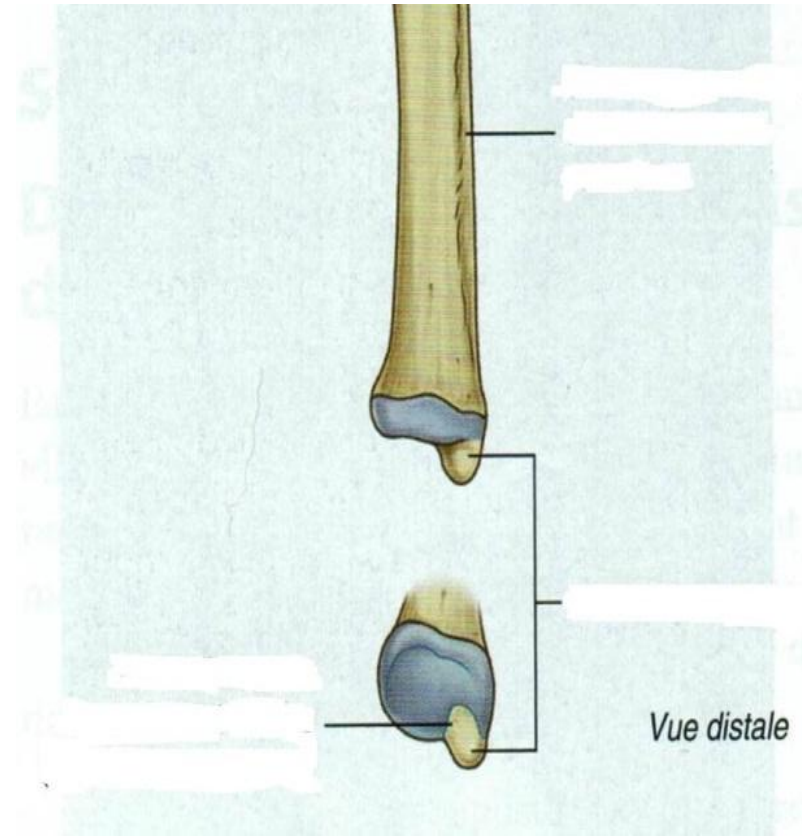
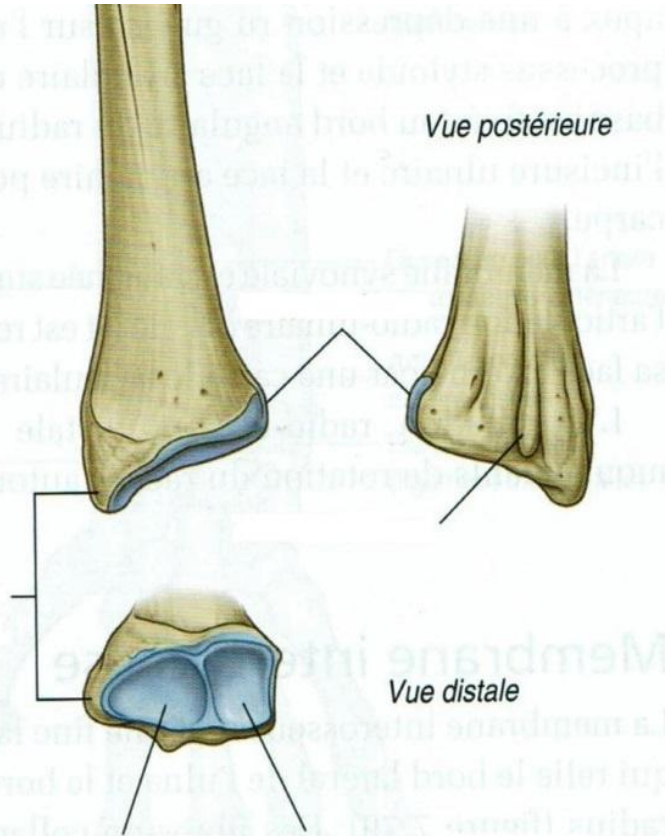
Membre supérieur

Avt bras(2) - poignet - main



Rappel Ostéologie ext.inf antérieure

radius / ulna

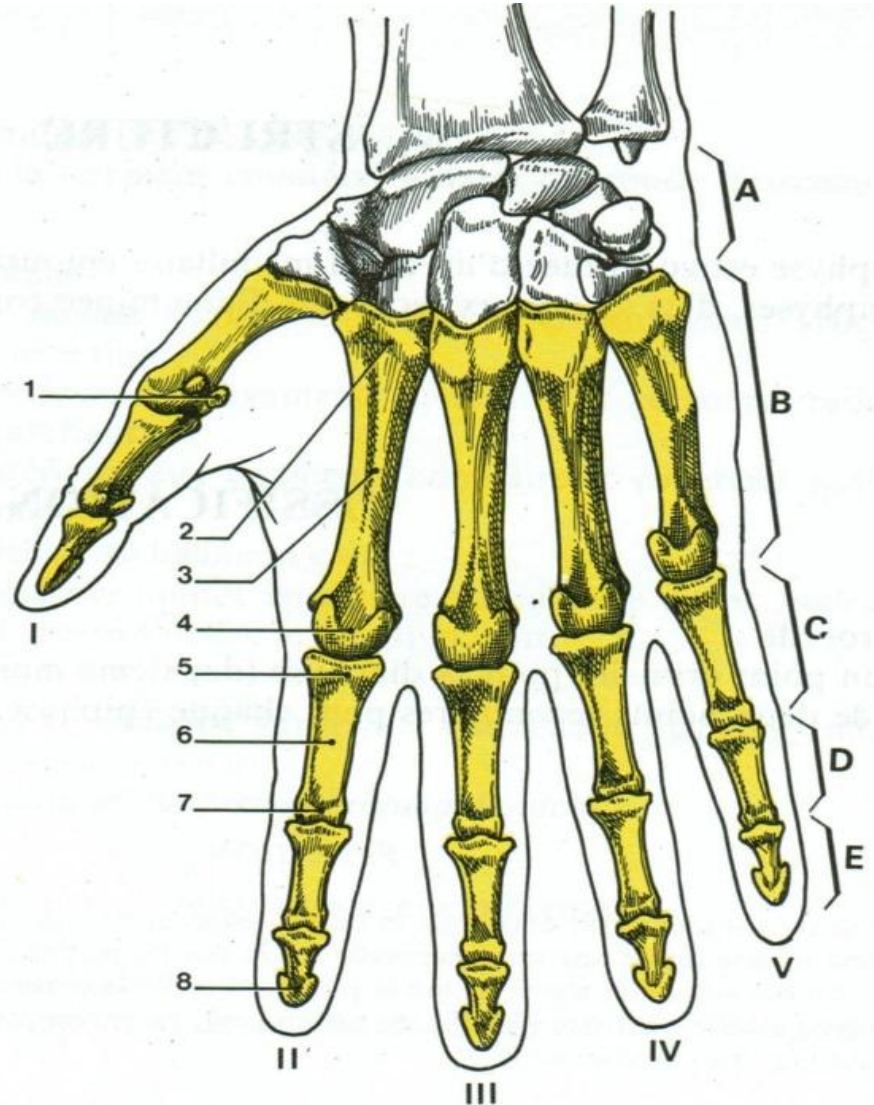


Ostéologie main / doigts

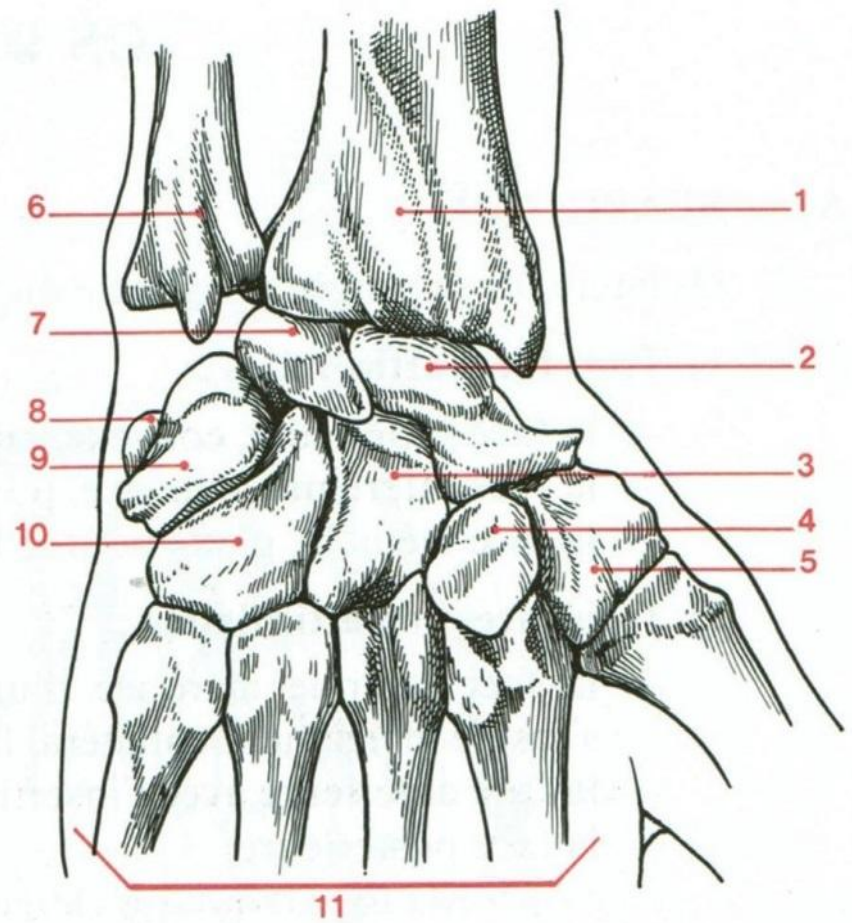
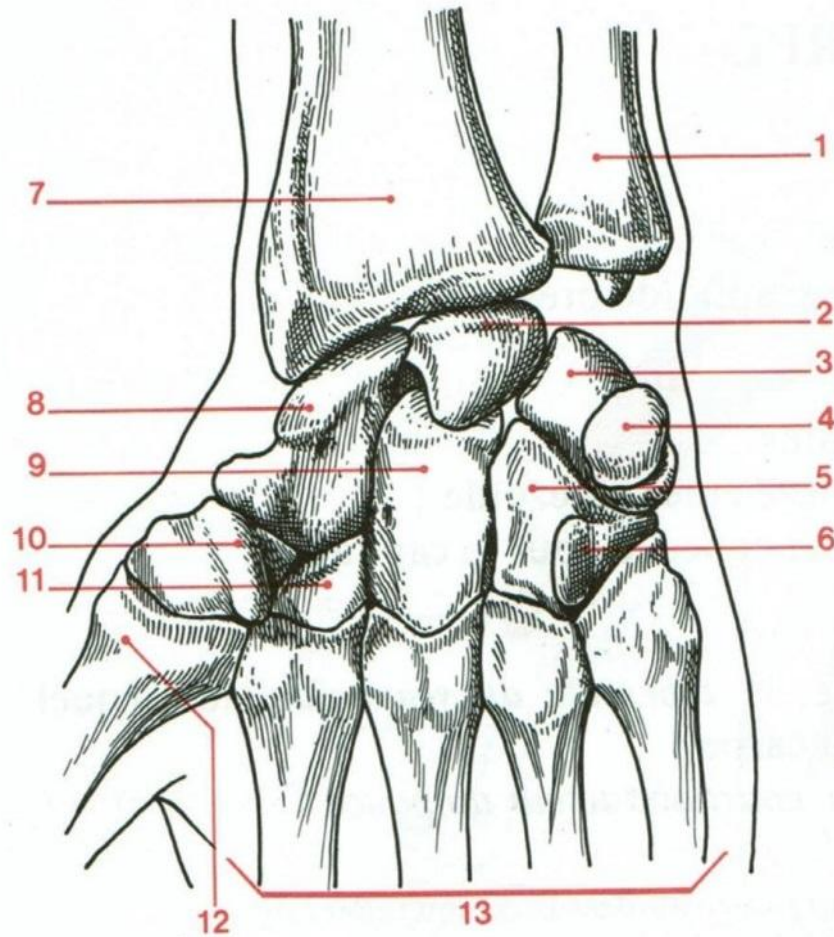
Os de la main (vue antérieure)

- A - carpe
- B - métacarpe
- C - phalange proximale
- D - phalange intermédiaire
- E - phalange distale
- F - radiographie du 3^e doigt

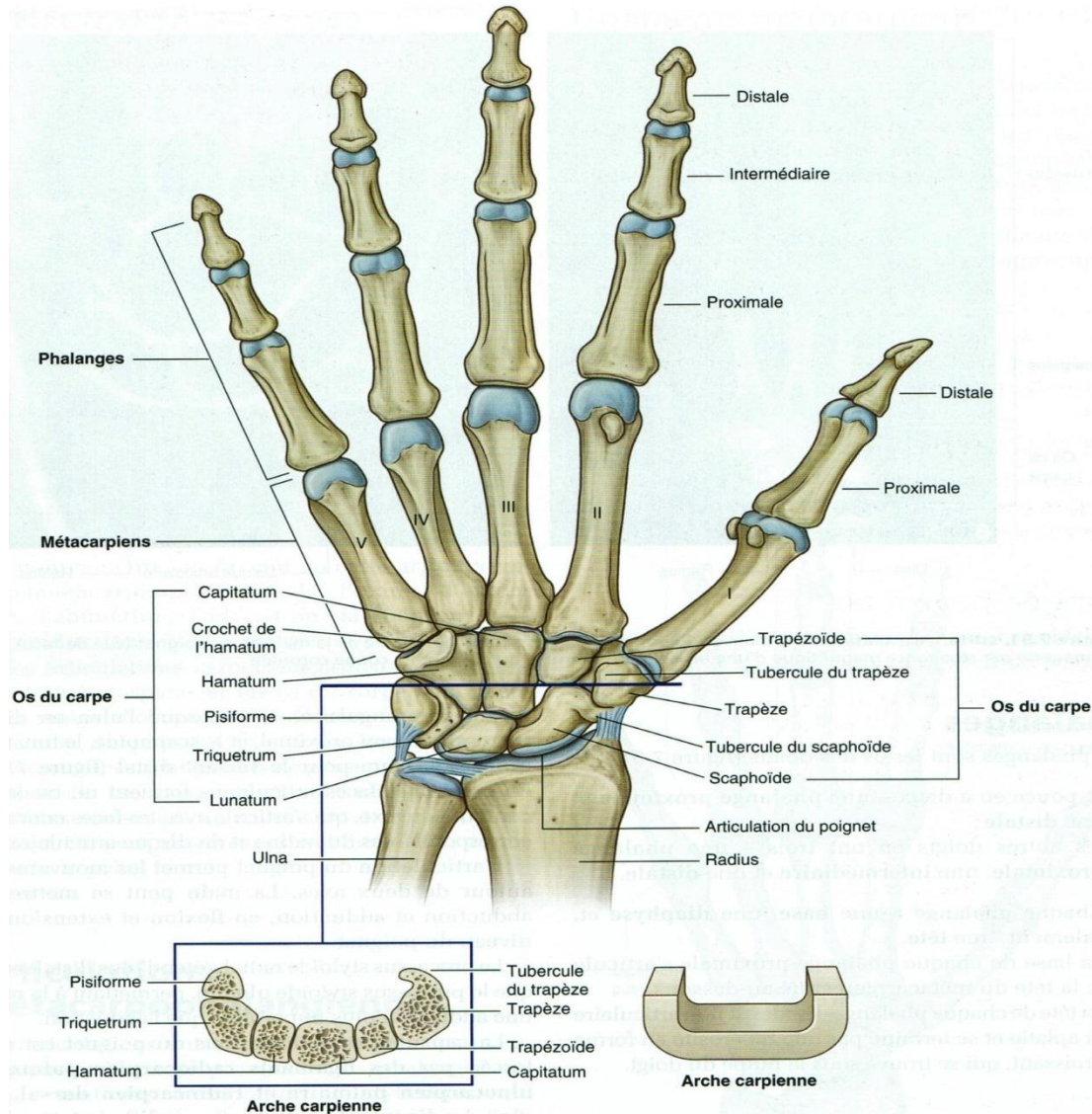
- 1 - os sésamoïde
- 2 - base du métacarpien
- 3 - corps du métacarpien
- 4 - tête du métacarpien
- 5 - base de la phalange
- 6 - corps de la phalange
- 7 - tête de la phalange
- 8 - tubérosité de la phalange distale



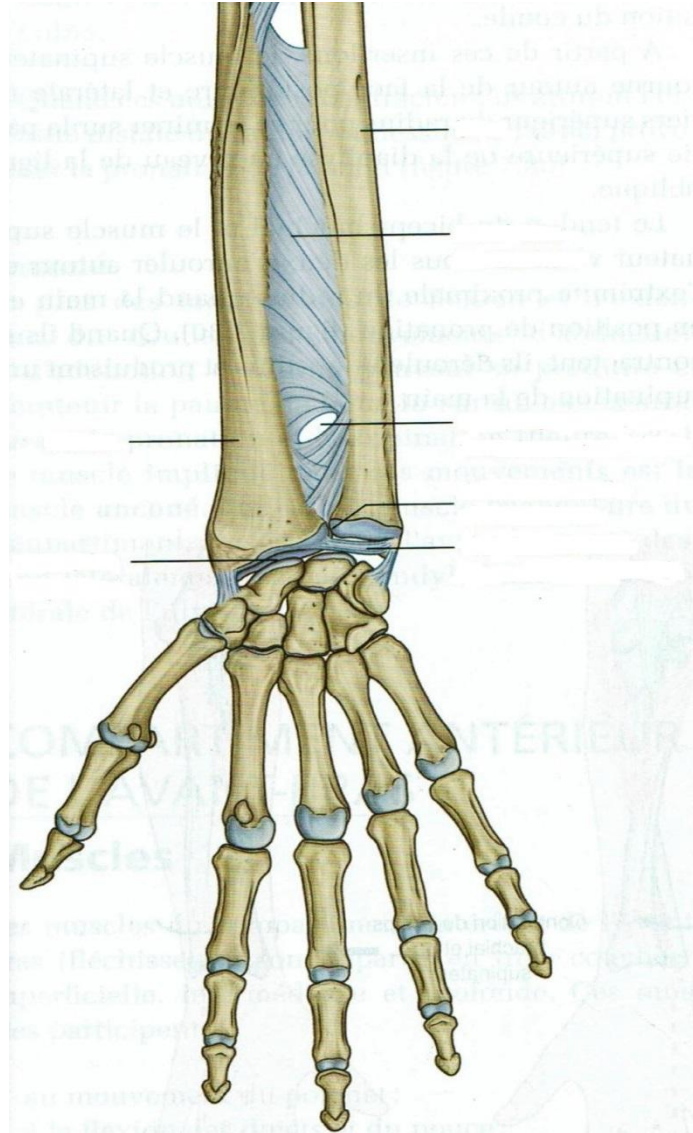
Ostéologie carpe



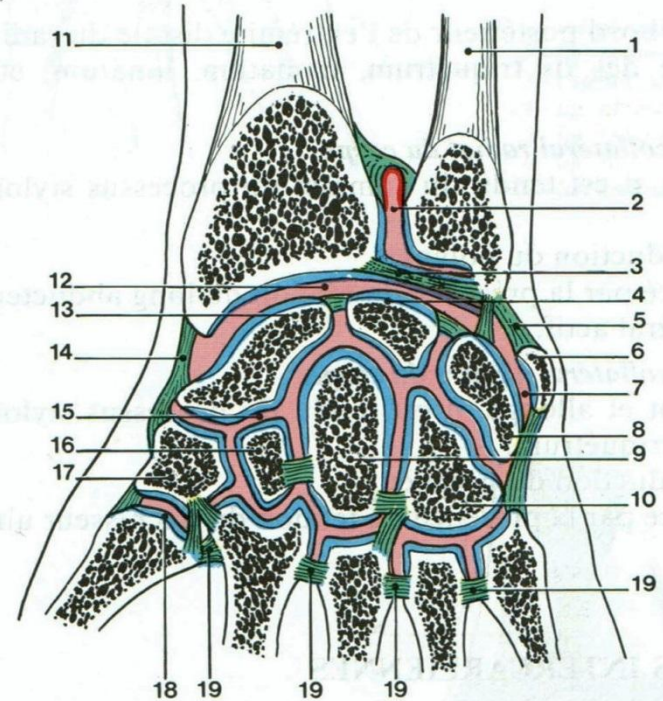
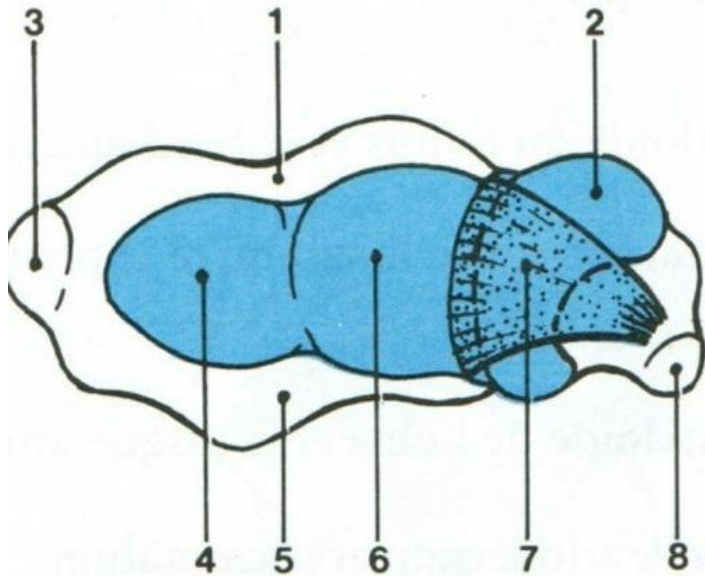
Ostéologie main globale



Arthrologie poignet 1



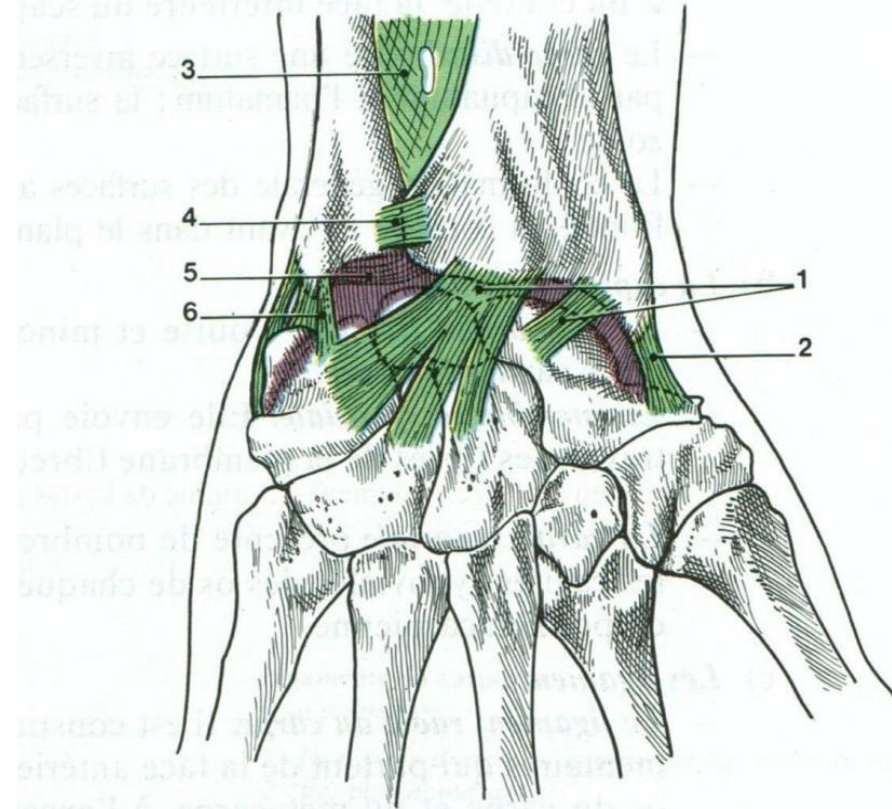
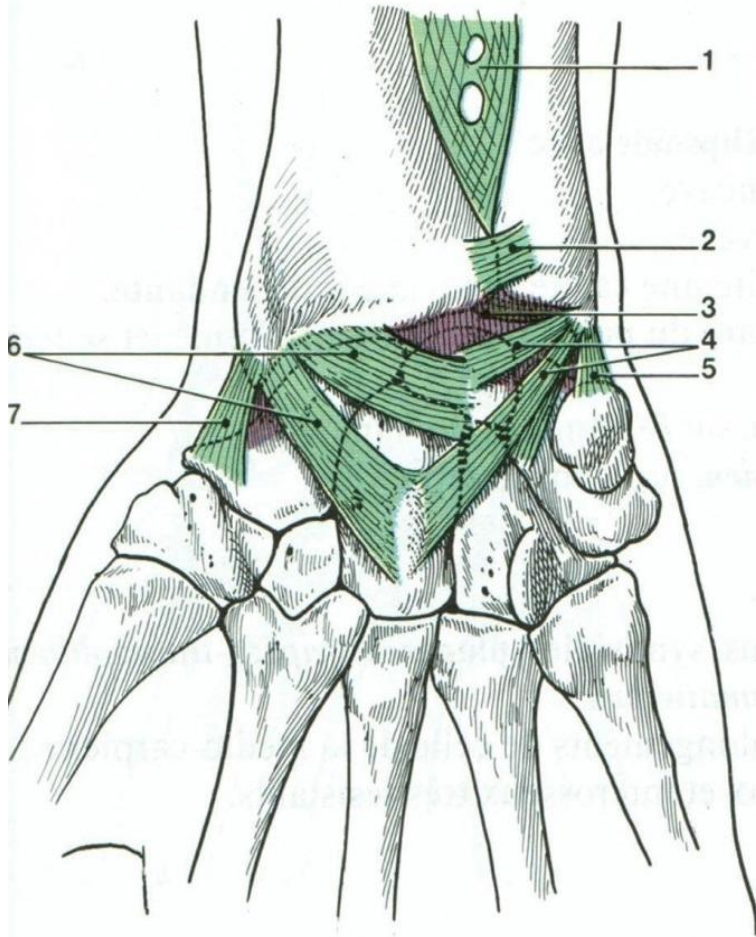
Arthrologie poignet 2



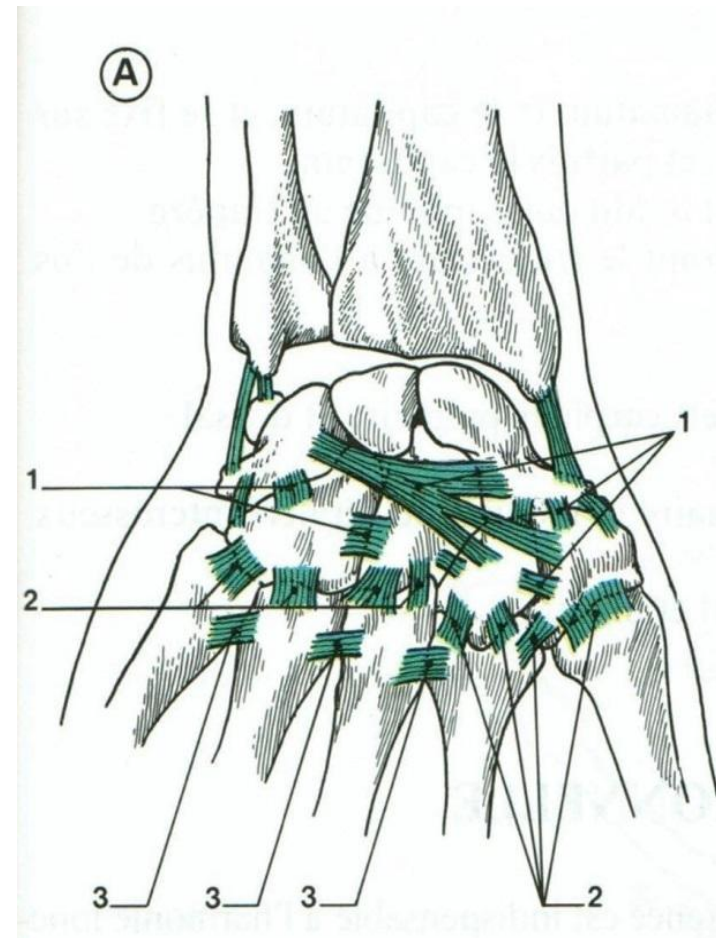
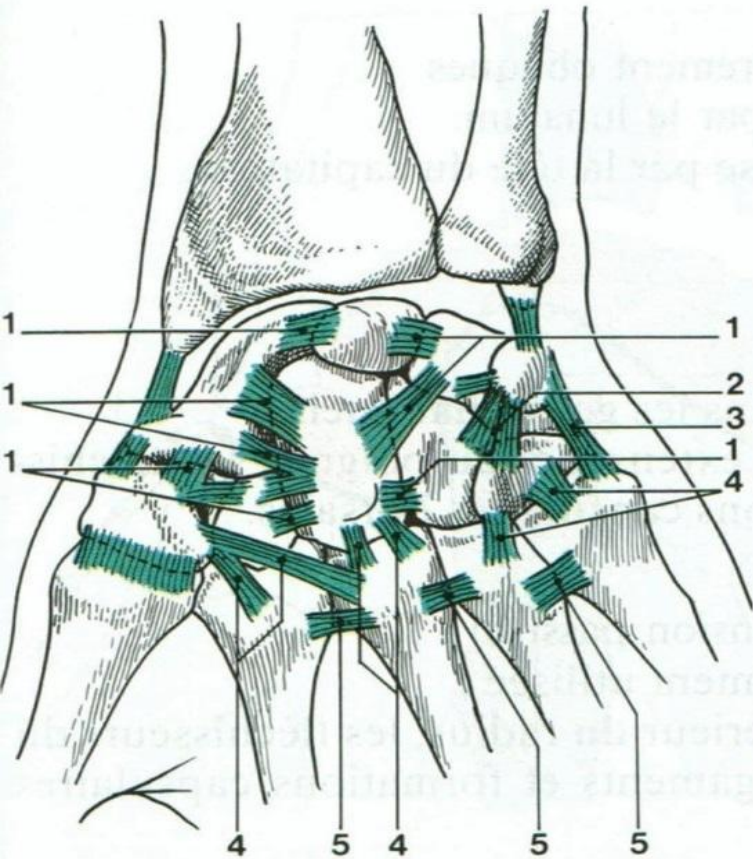
Coupe frontale du poignet droit (schématique)

- | | |
|--------------------------------------|--|
| 1 - ulna | 11 - radius |
| 2 - art. radio-ulnaire distale | 12 - art. radio-carpienne |
| 3 - disque articulaire | 13 - os scaphoïde |
| 4 - os lunatum | 14 - lig. collatéral radial du carpe |
| 5 - lig. collatéral ulnaire du carpe | 15 - art. médiocarpienne |
| 6 - os pisiforme | 16 - os trapézoïde |
| 7 - art. de l'os pisiforme | 17 - os trapèze |
| 8 - os triquétrum | 18 - art. carpo-métacarpienne du pouce |
| 9 - os capitatium | 19 - lig. métacarpiens interosseux |
| 10 - os hamatum | |

Arthrologie poignet ligaments radio-carpiens

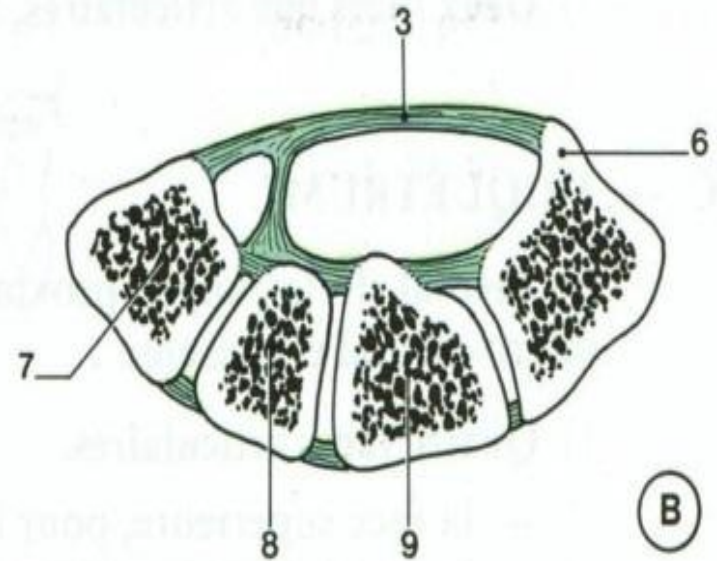
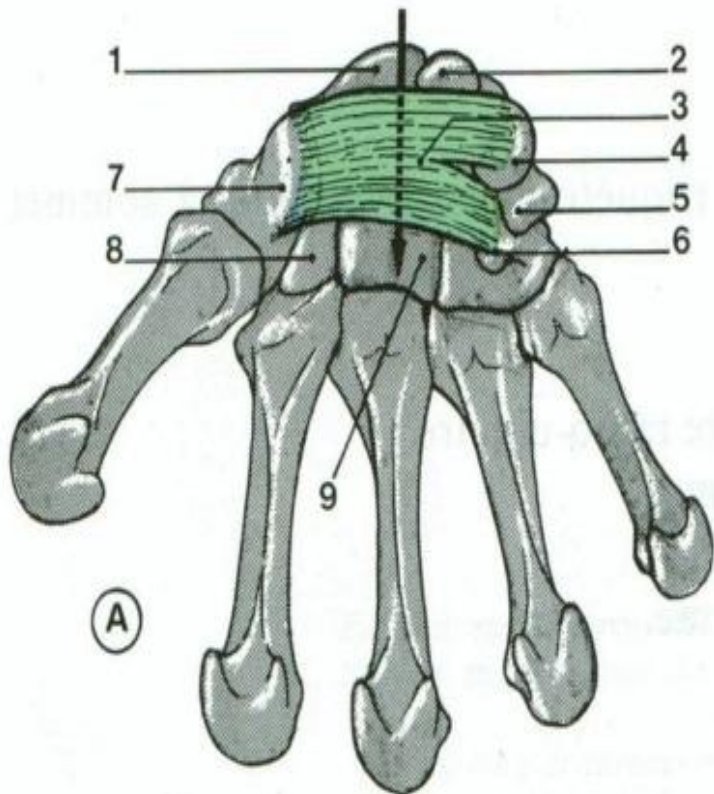


Arthrologie poignet ligaments carpiens



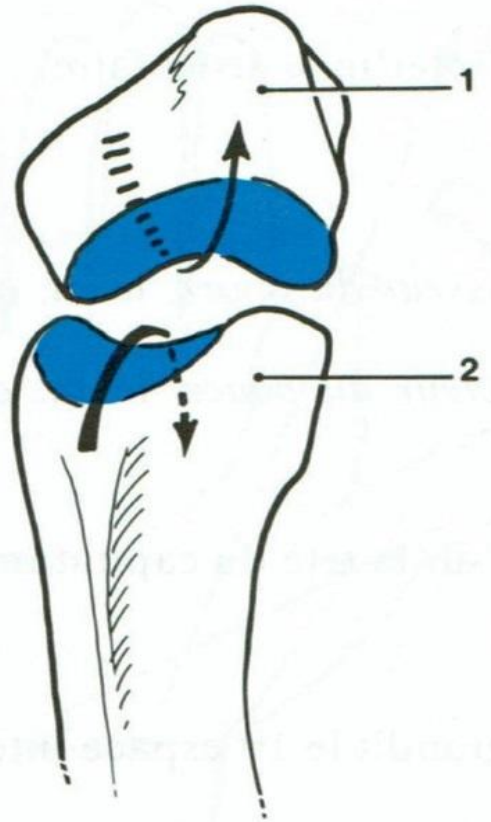
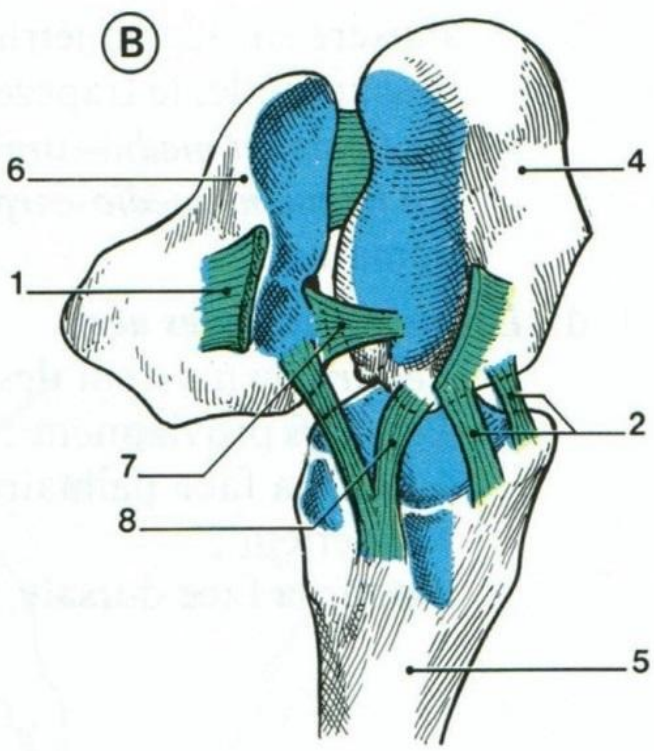
Arthrologie poignet

Rétinaculum palmaire fléchisseurs

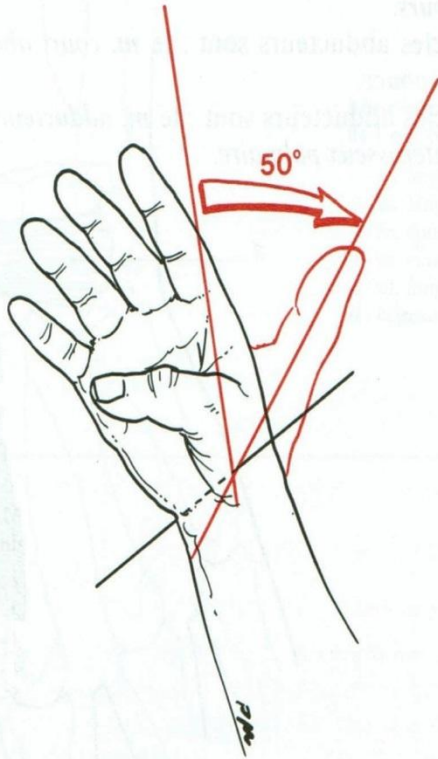


Arthrologie art° carpo-métacarpienne

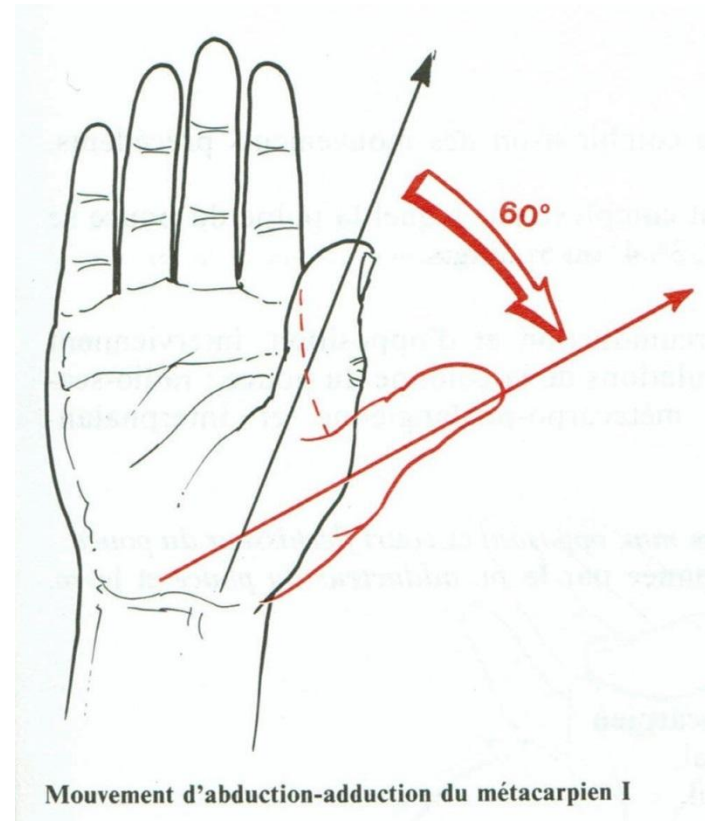
III / I



Arthrologie / mobi trapézo –méta I

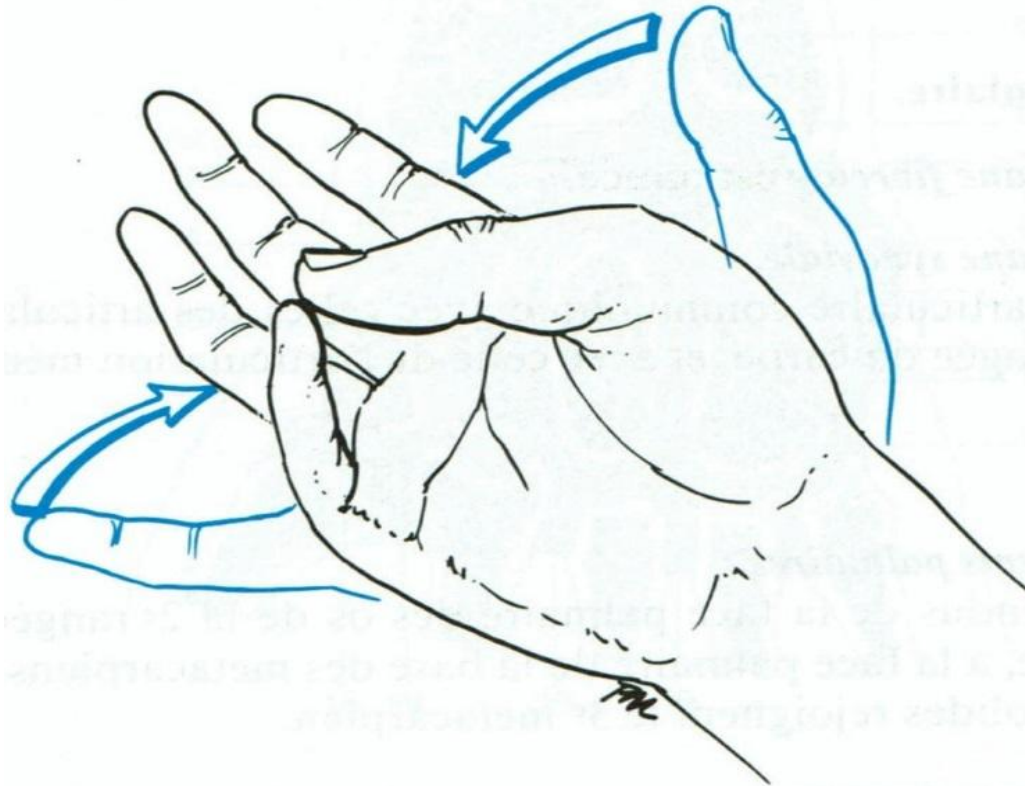


Mouvement de flexion-extension du métacarpien I

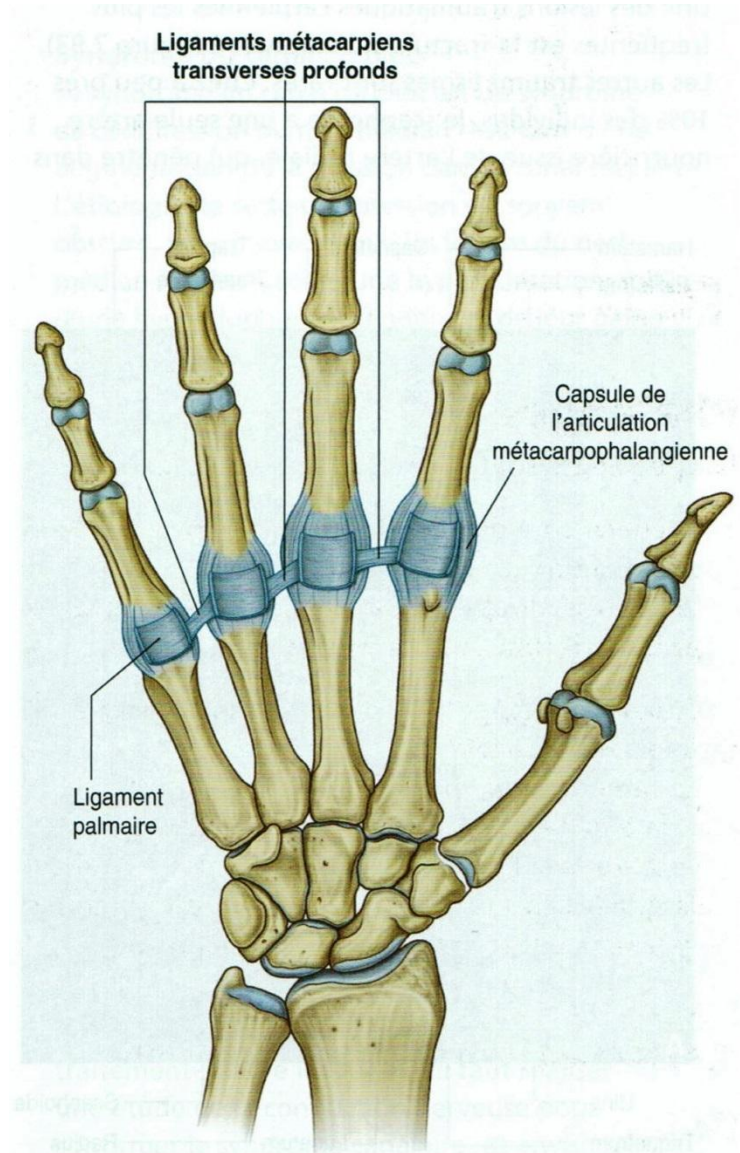
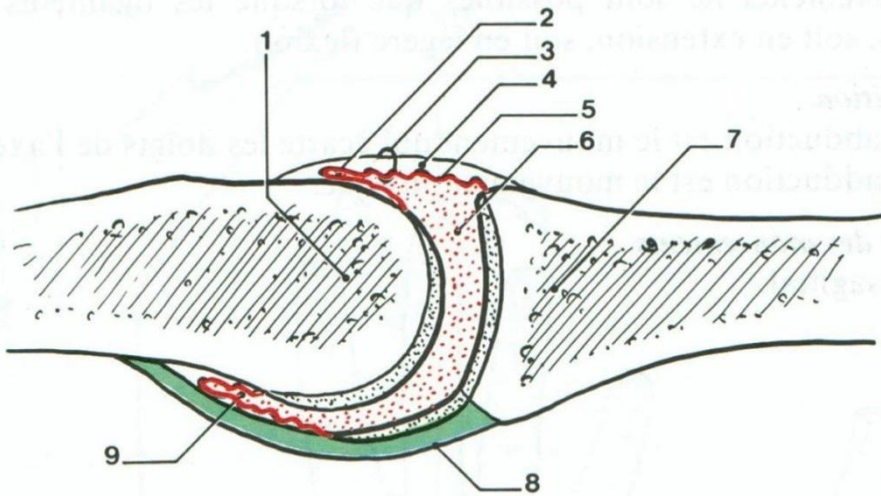


Mouvement d'abduction-adduction du métacarpien I

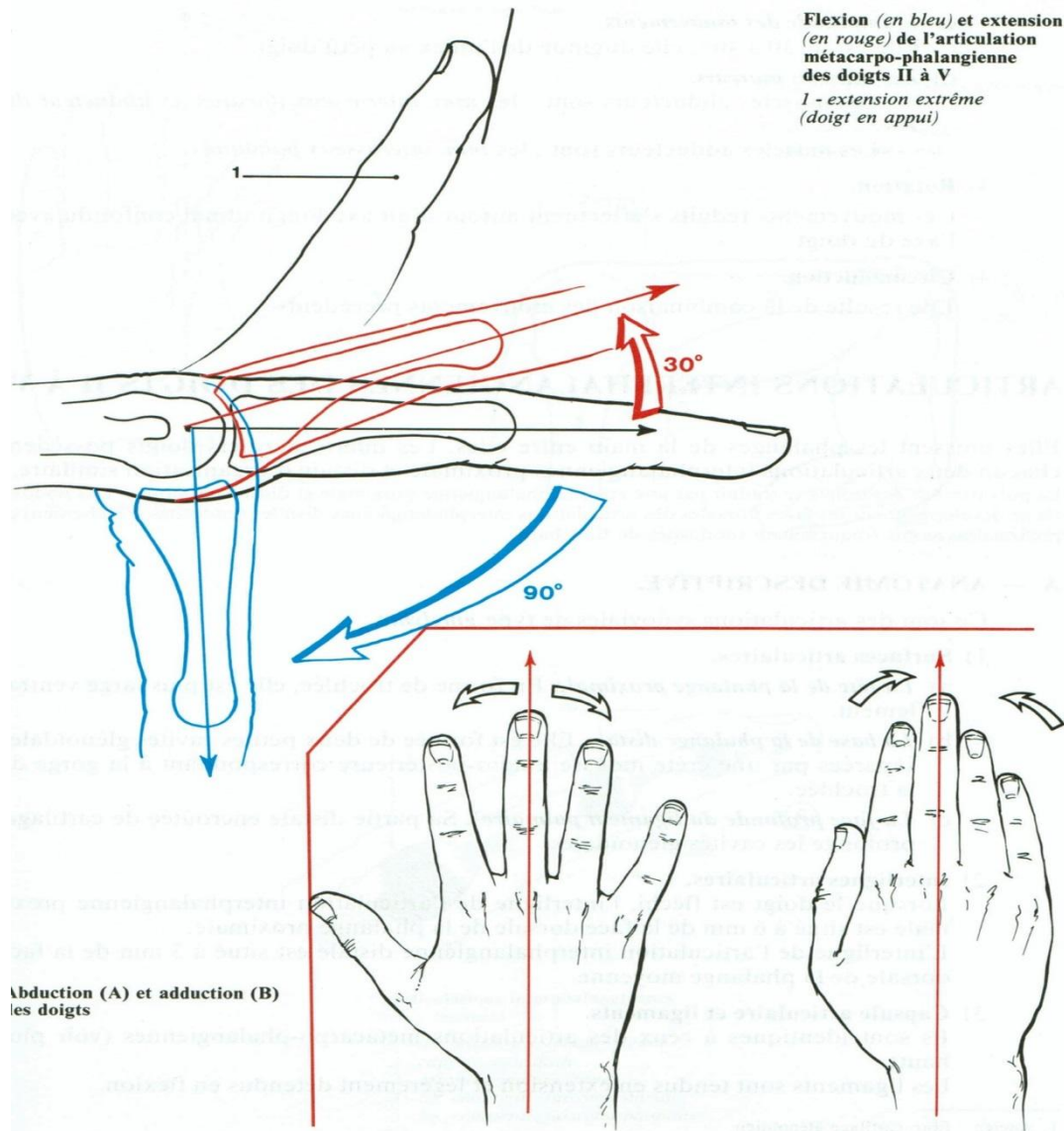
Arthrologie / mobi méta II à V



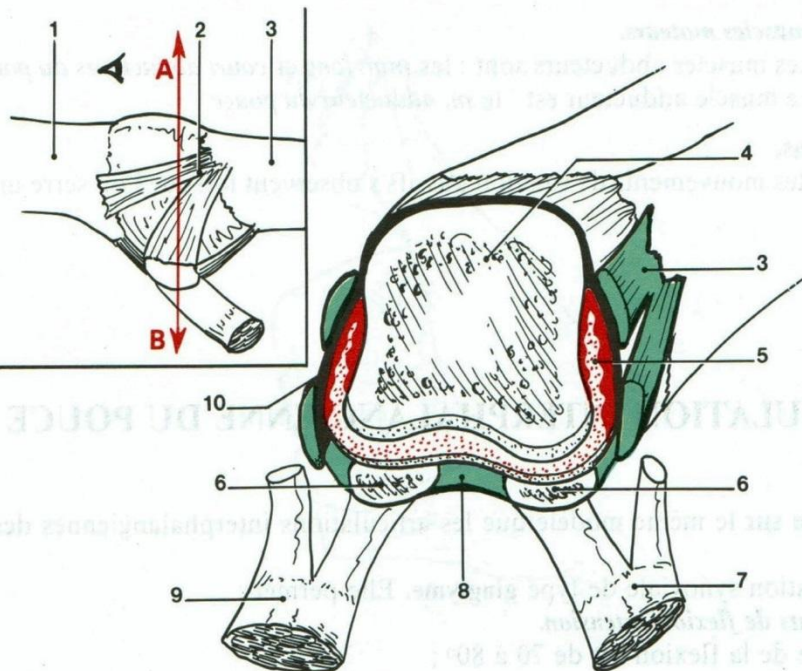
Arthrologie MCP



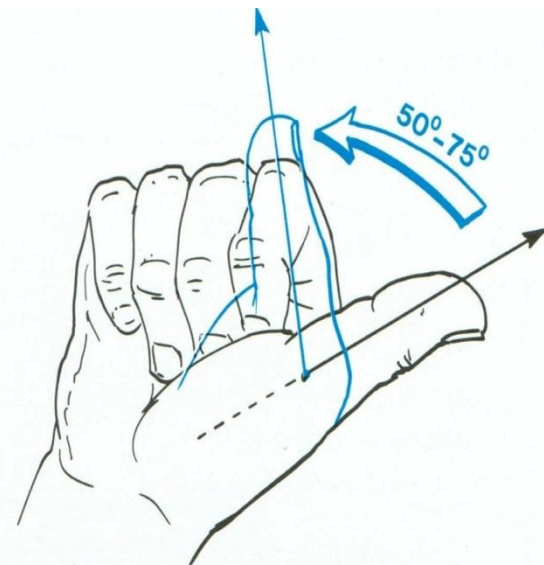
Arthrologie / mobi MCP



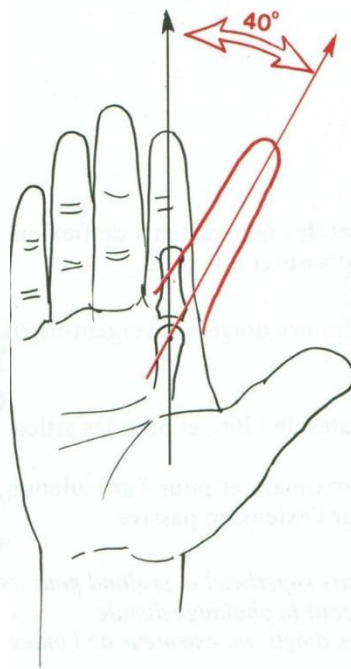
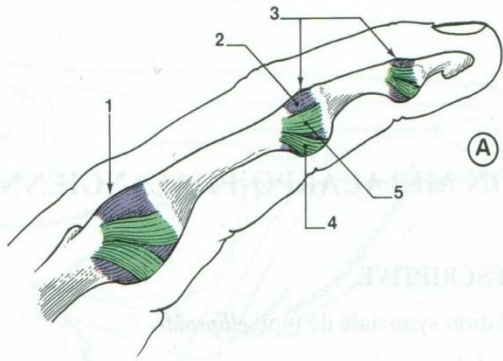
Arthrologie MCP Pollex



Flexion de l'articulation métacarpo-phalangienne du pouce



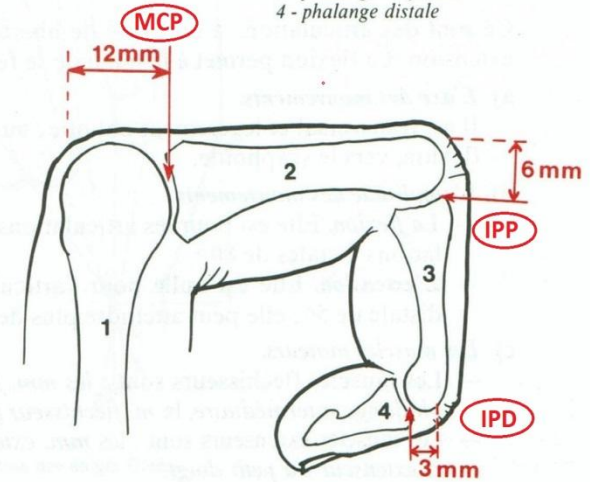
Arthrologie MCP et IP



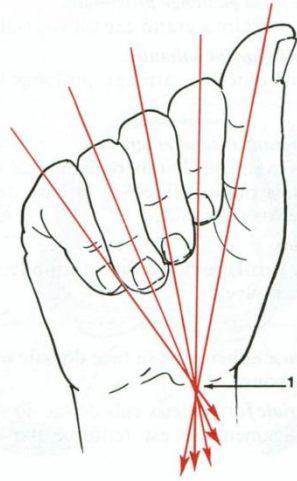
Abduction de l'index
dans la MCP

Situation des interlignes articulaires

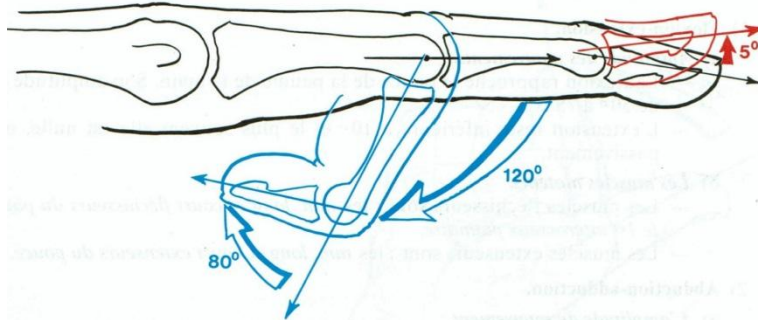
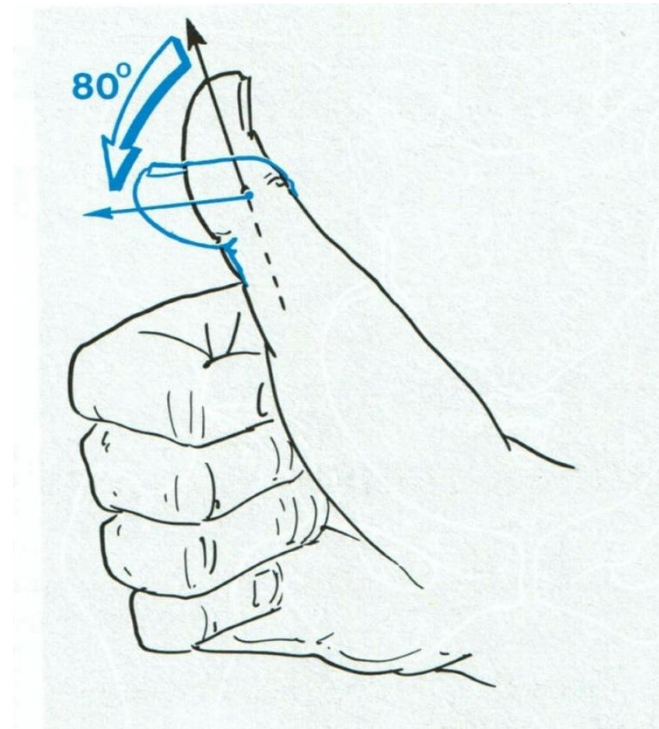
- 1 - métacarpe
- 2 - phalange proximale
- 3 - phalange moyenne
- 4 - phalange distale



Arthrologie / mobi IP doigts - pollex

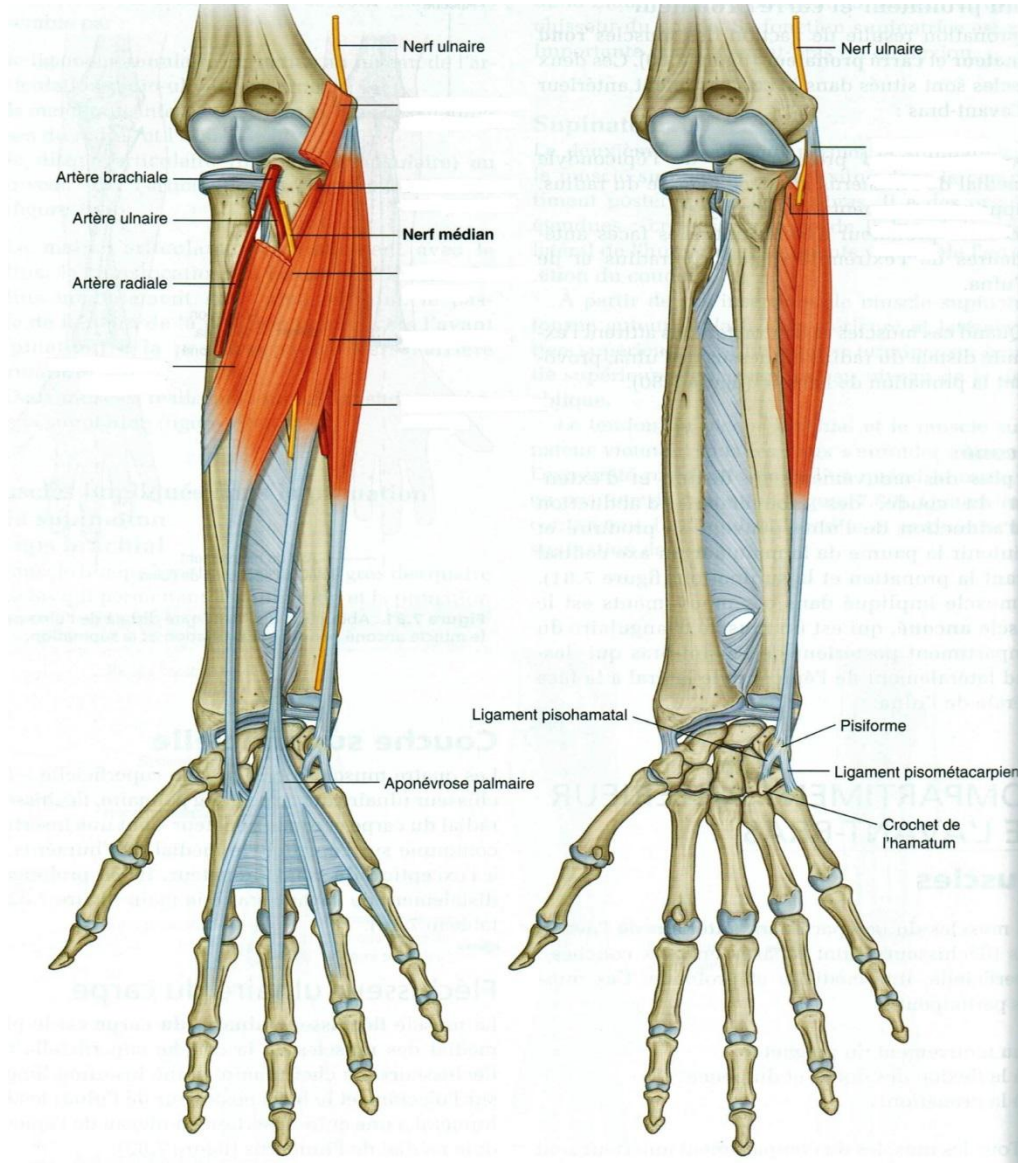


Direction des doigts fléchis
1 - point scaphoïdien



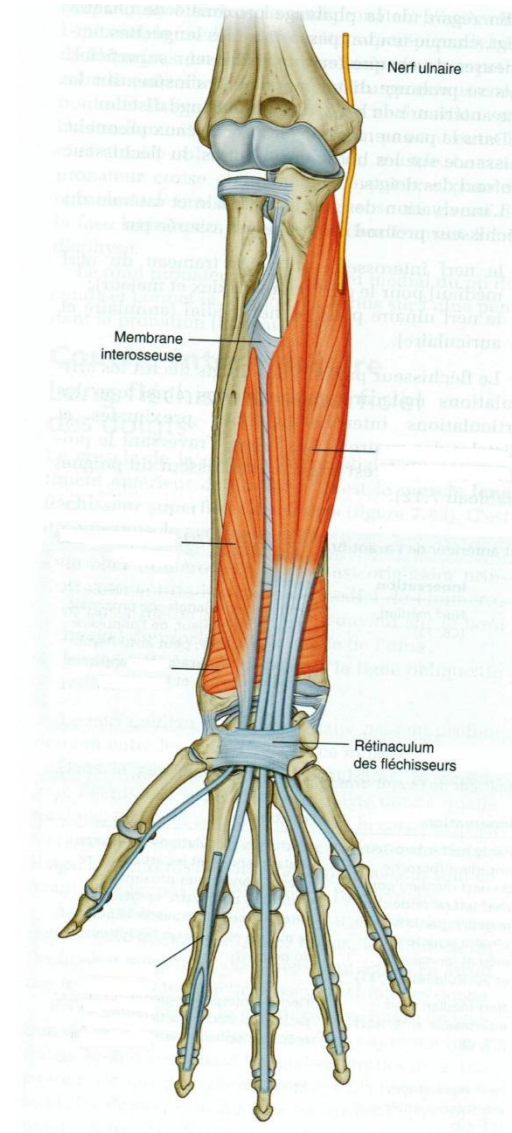
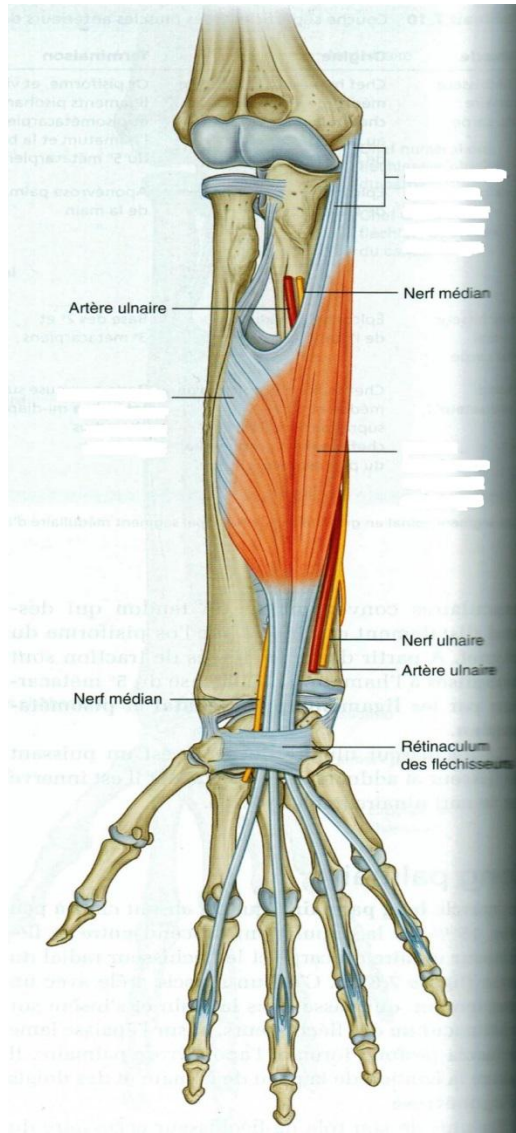
Flexion (en bleu) et extension (en rouge) des phalanges

Myologie avt bras grp. ant / plan superficiel

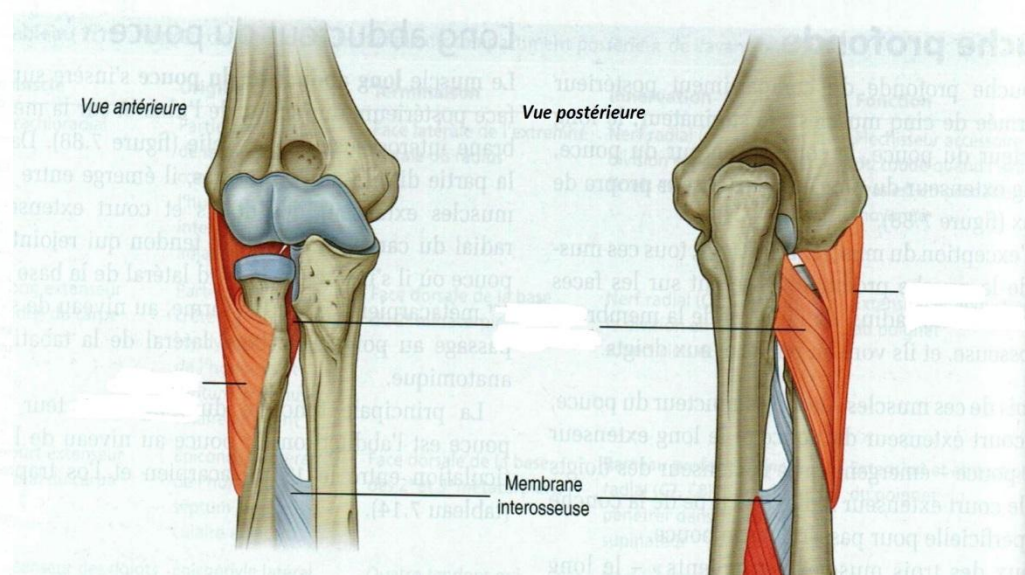
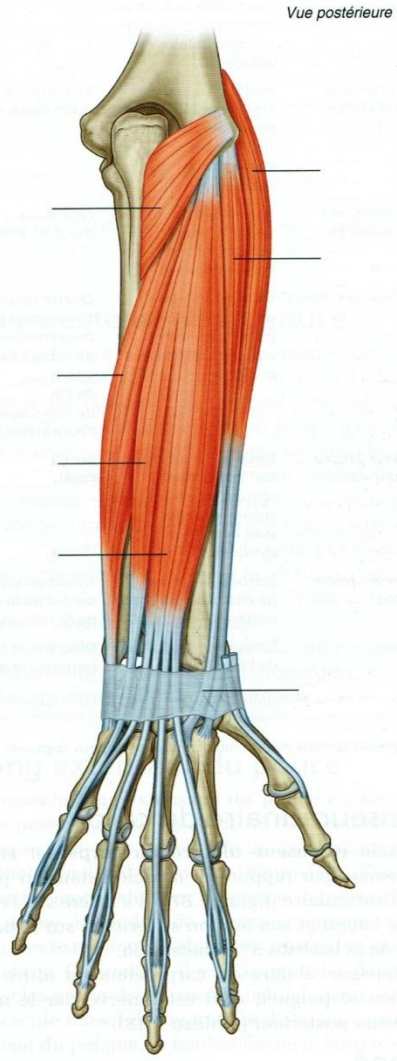
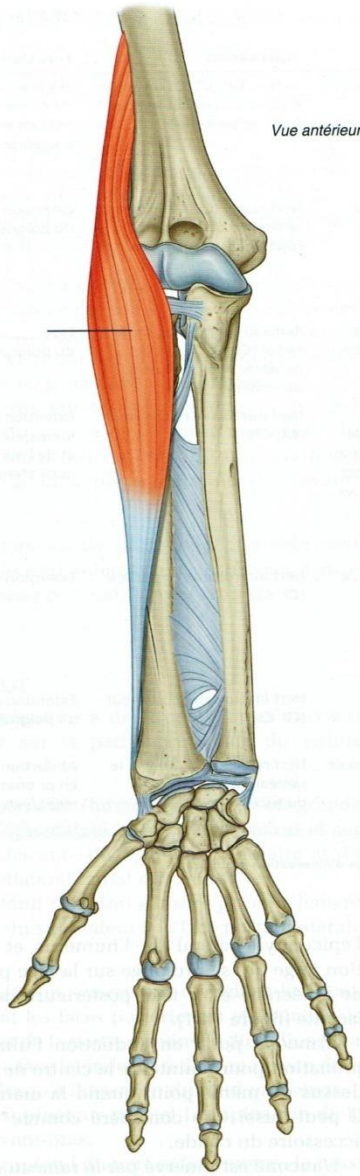


Myologie avt bras

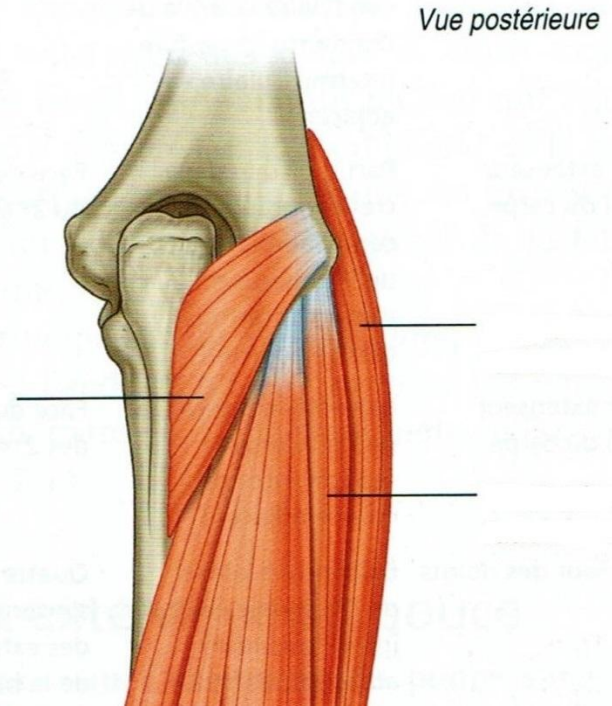
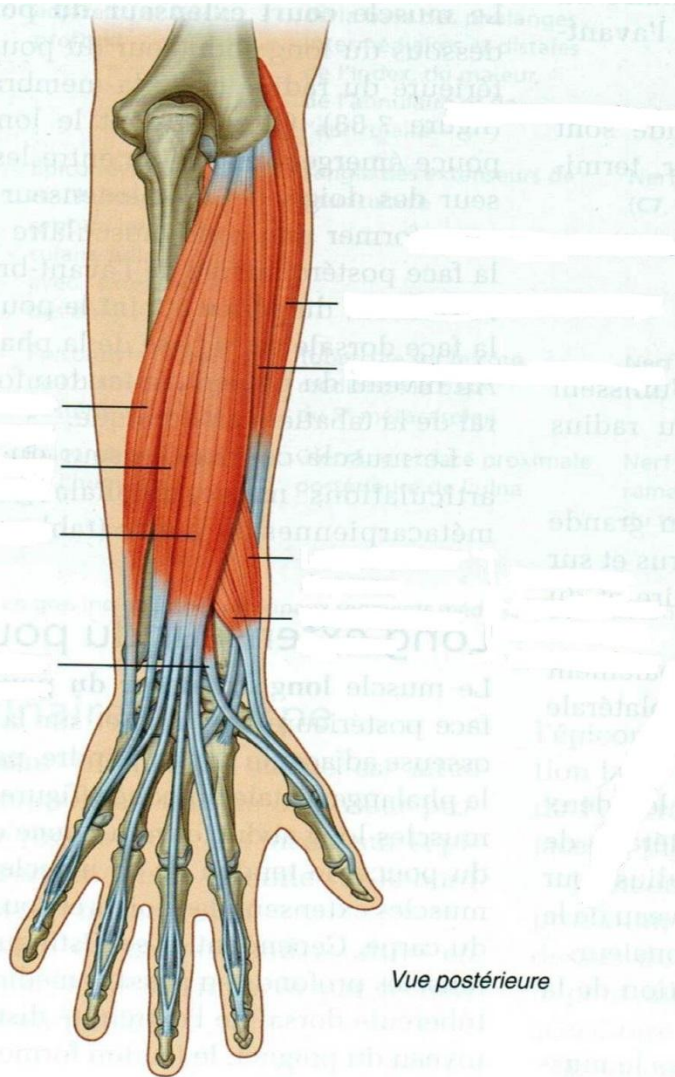
grp ant / plan moyen et profond



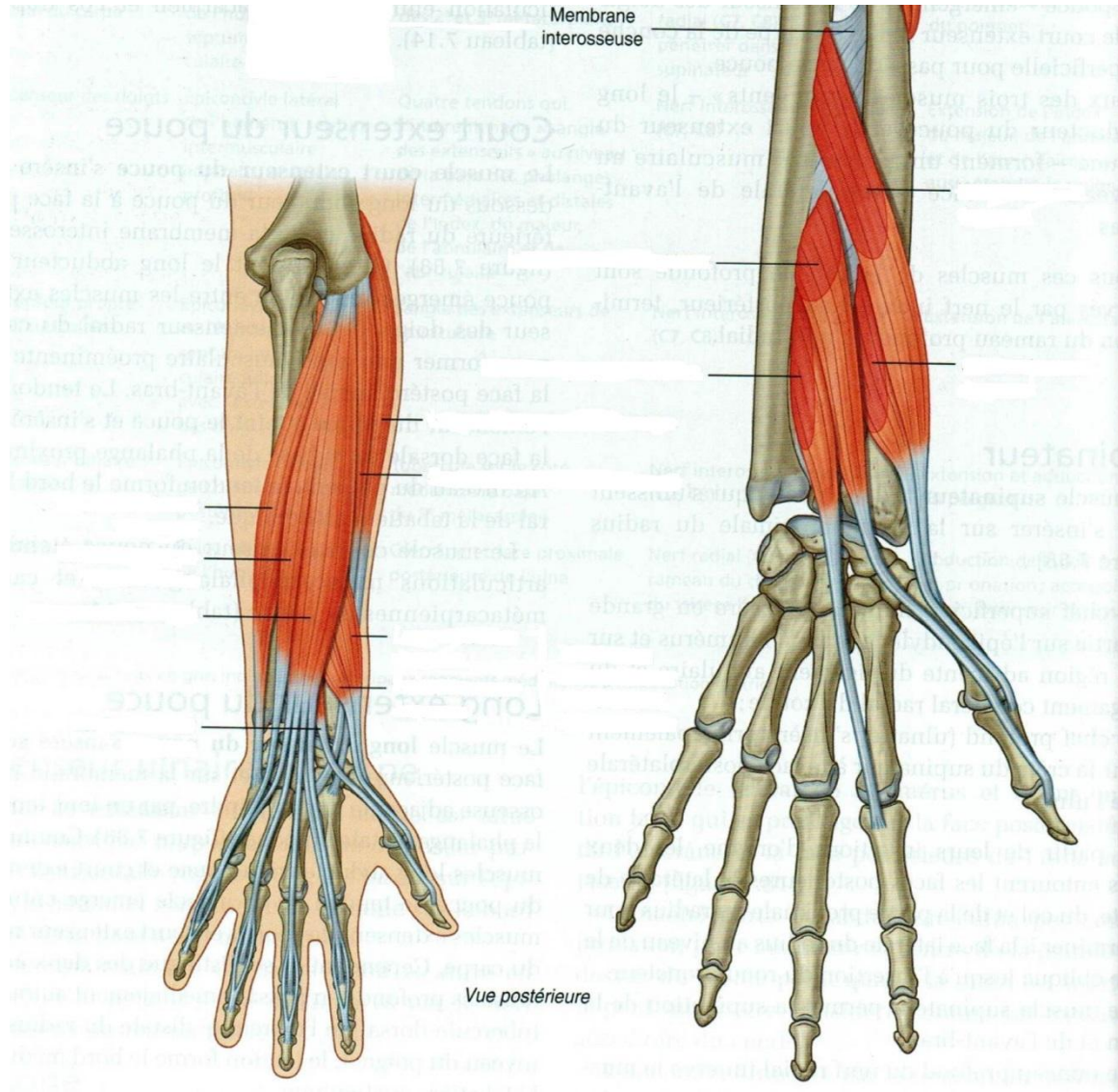
Myologie avt bras grp latéral



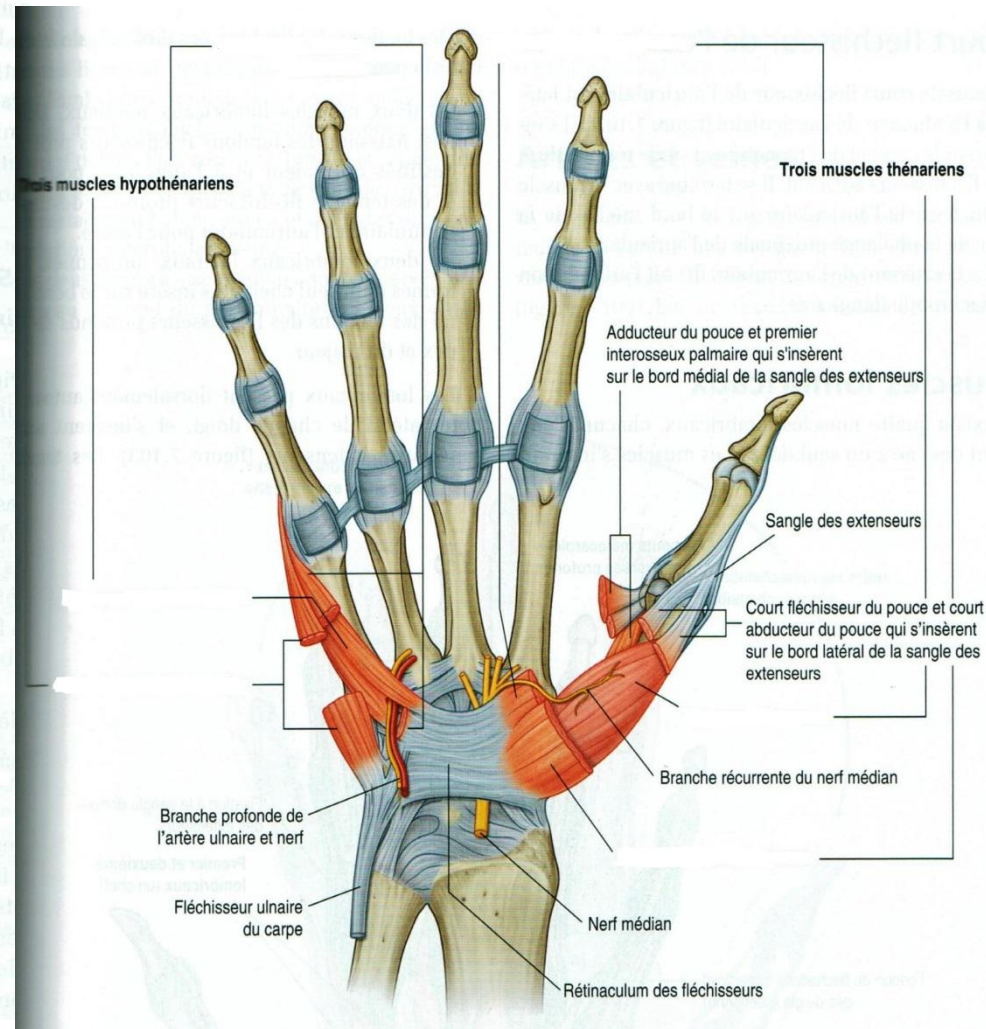
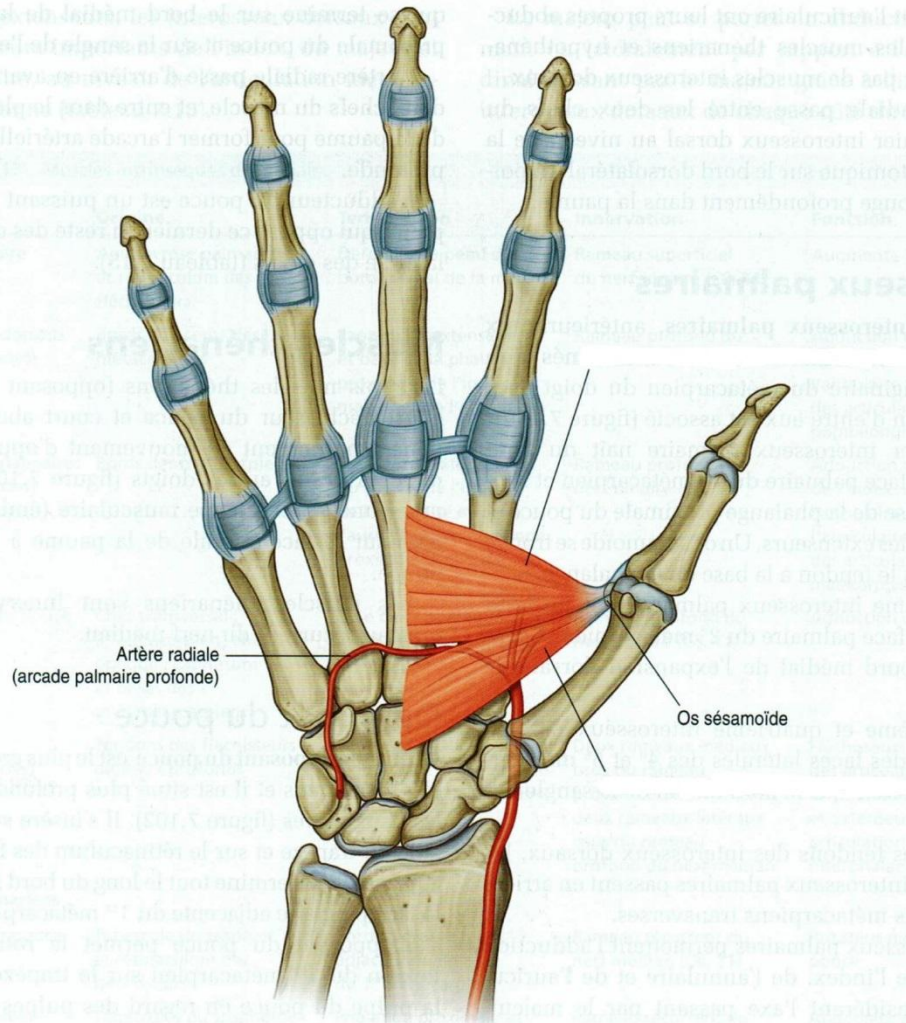
Myologie avt bras grp post / plan superficiel



Myologie avt bras grp post / plan profond

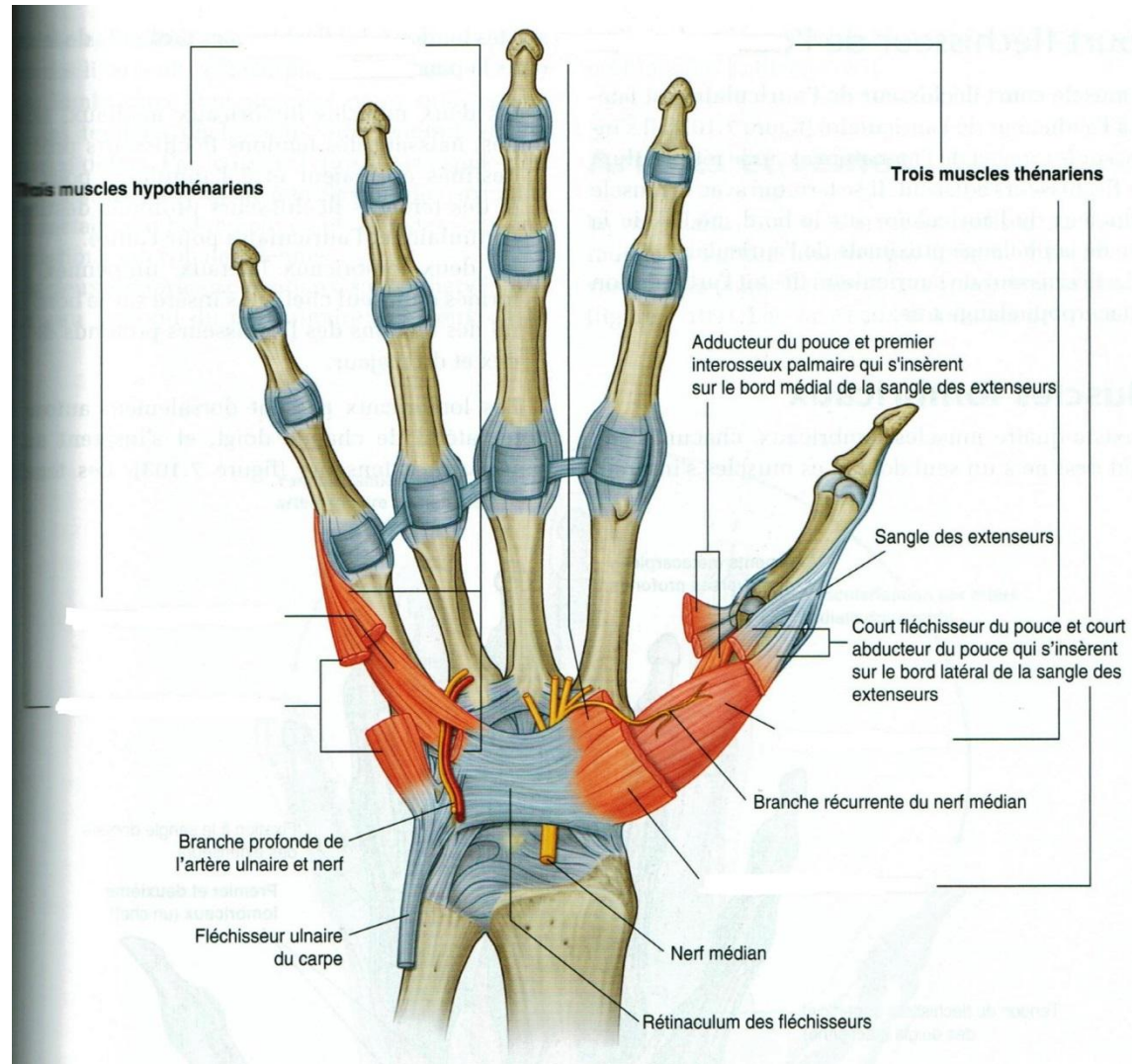


Myologie main loge thénarienne

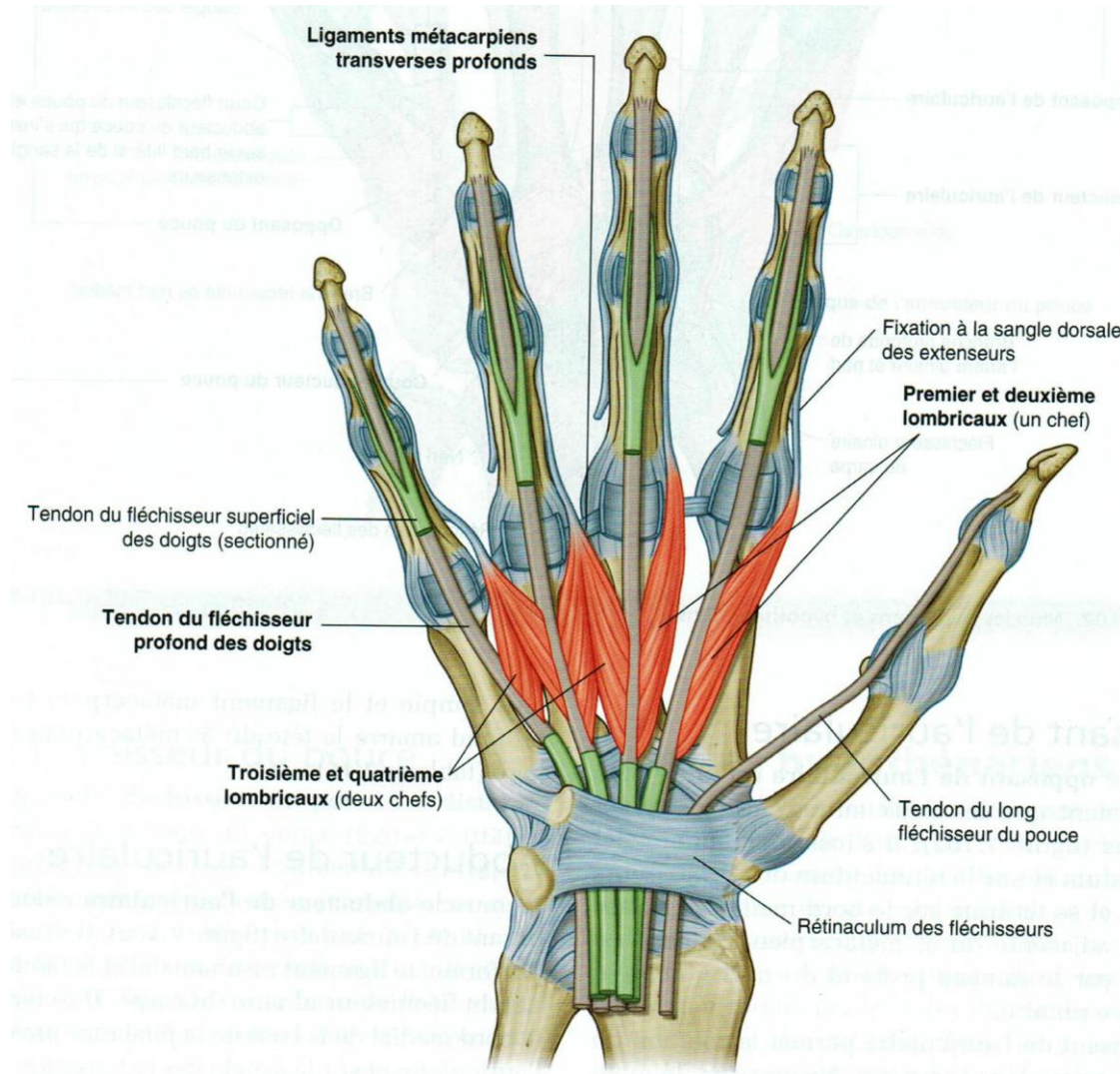


Myologie main

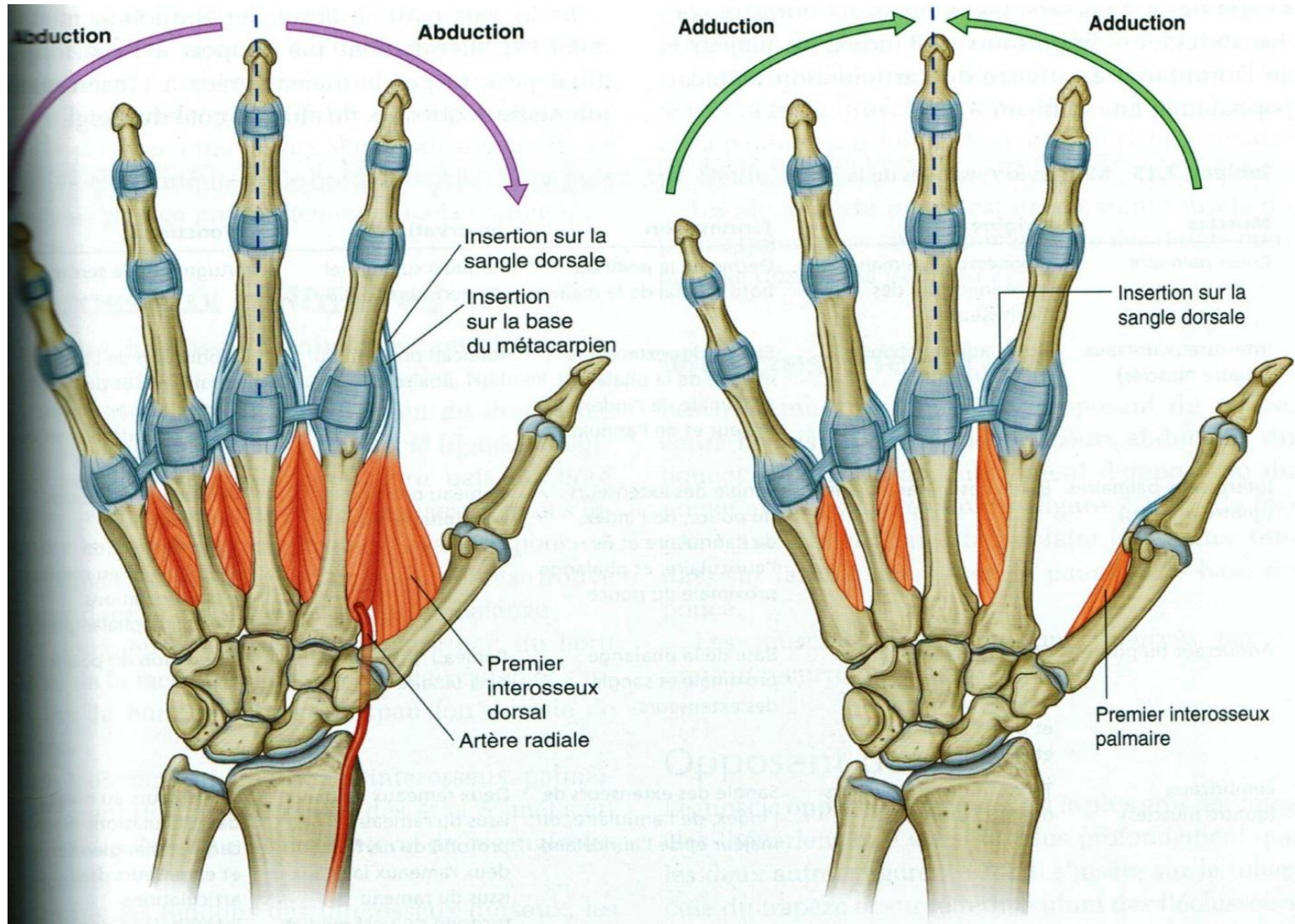
loge hypothénarienne



Myologie main les lombricaux

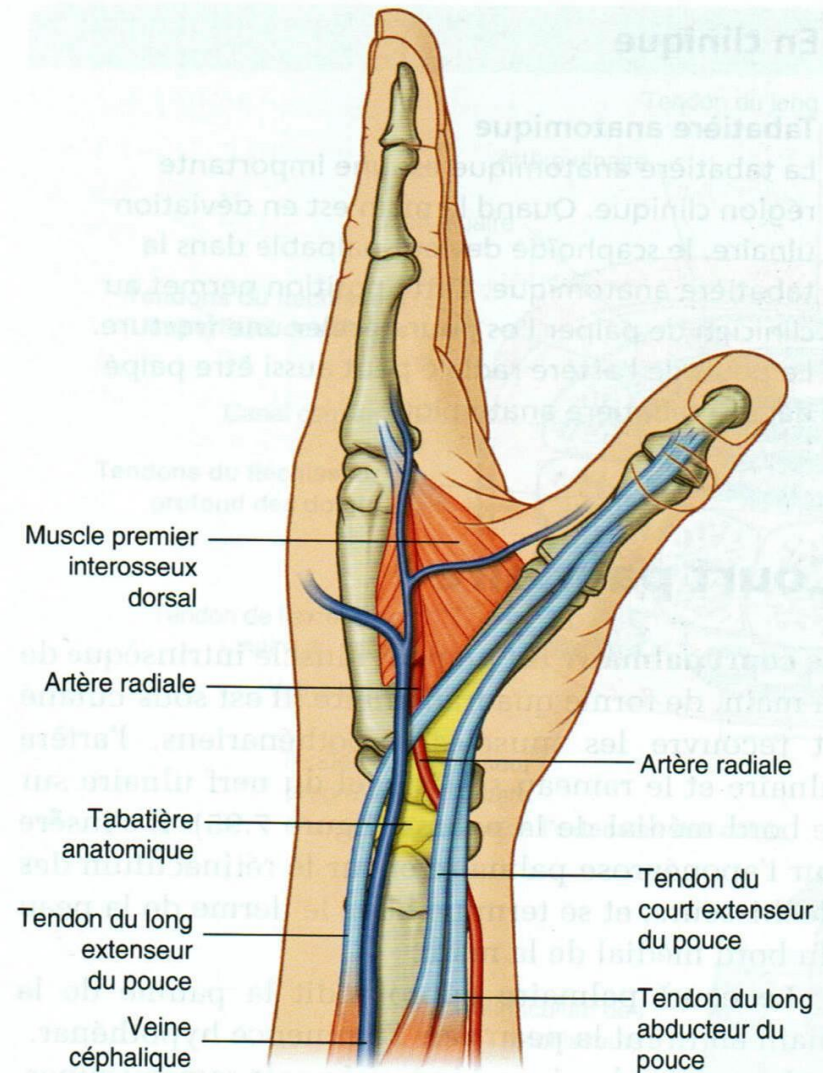
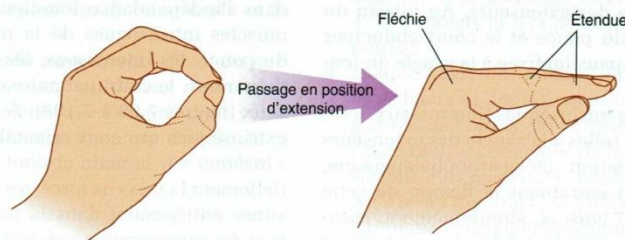
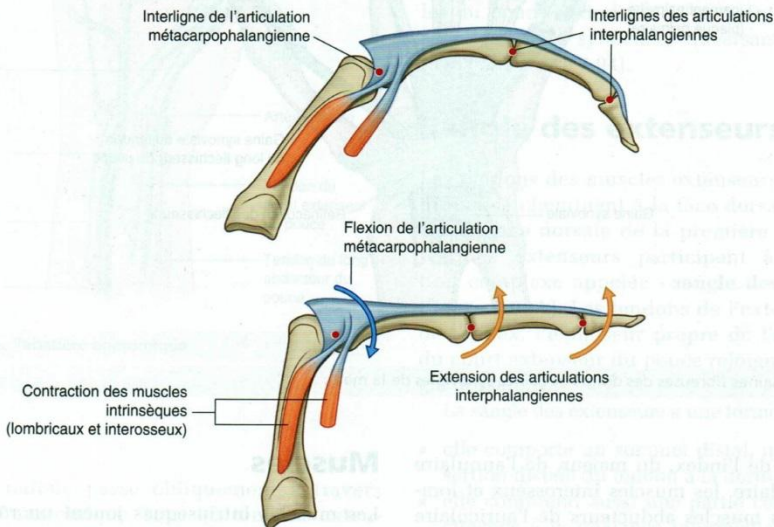
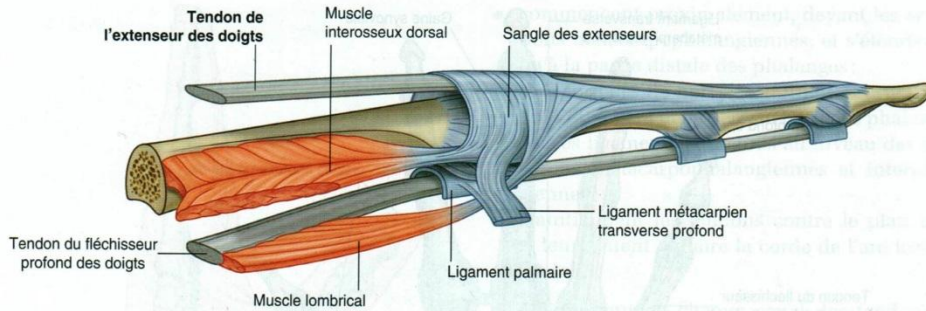


Myologie main les inter- osseux



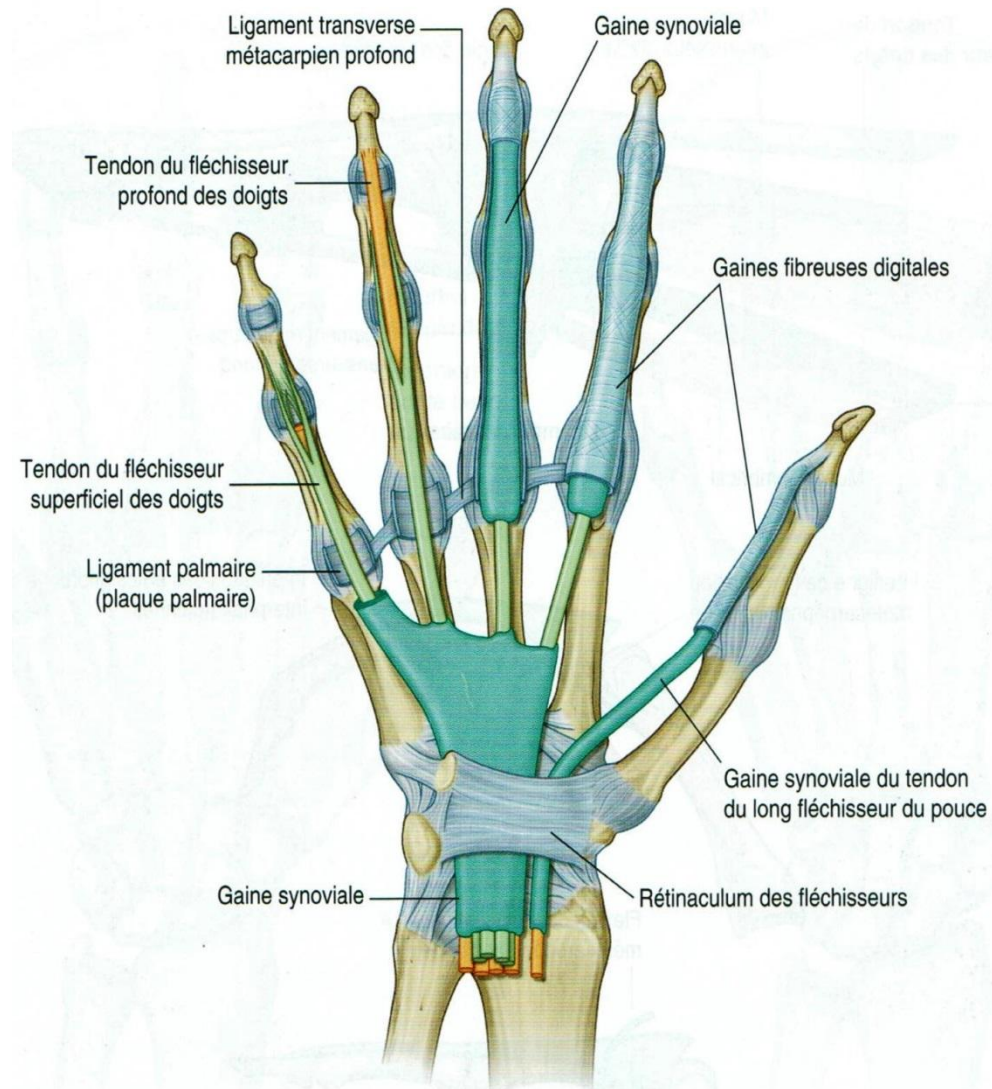
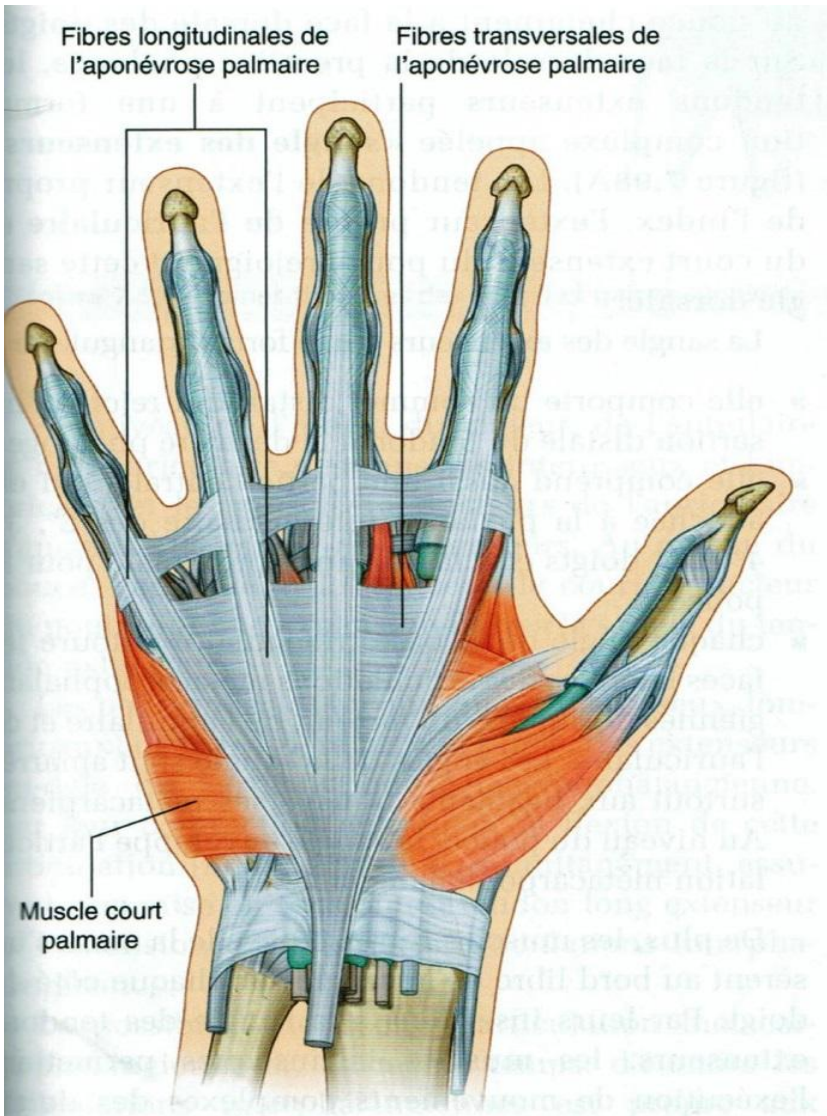
Myologie main

dossier des IO / tabatière anatomique

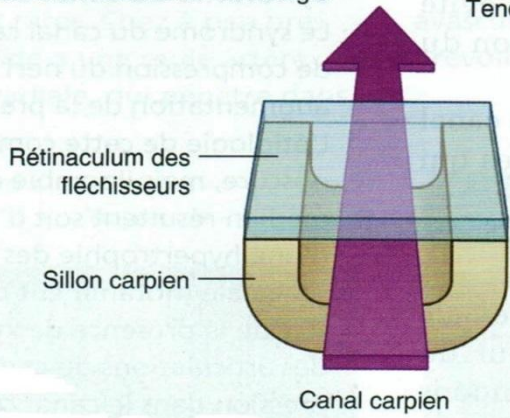
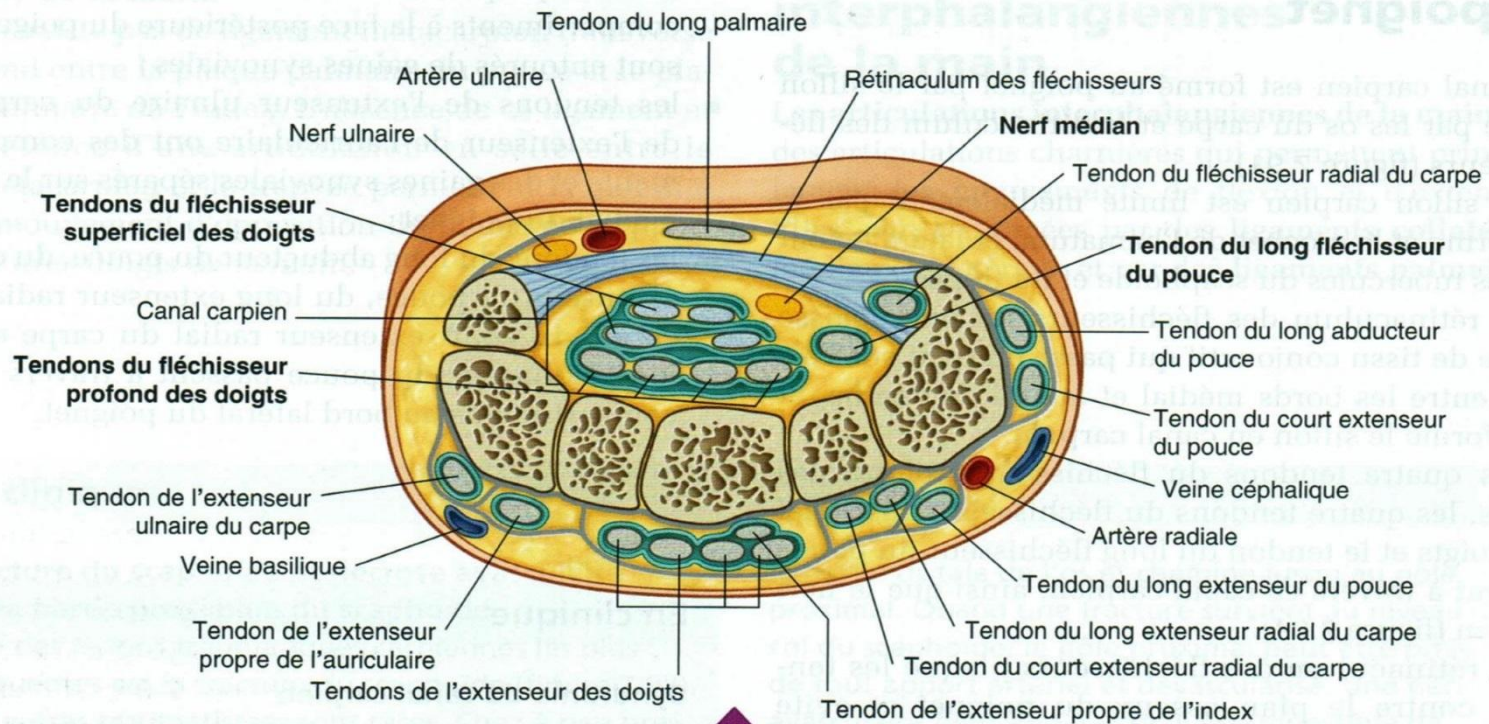


Myologie main

aponévrose / gaines synoviale



Myologie main canal carpien



Remarques neuro – mbre sup plexus brachial / nerfs terminaux

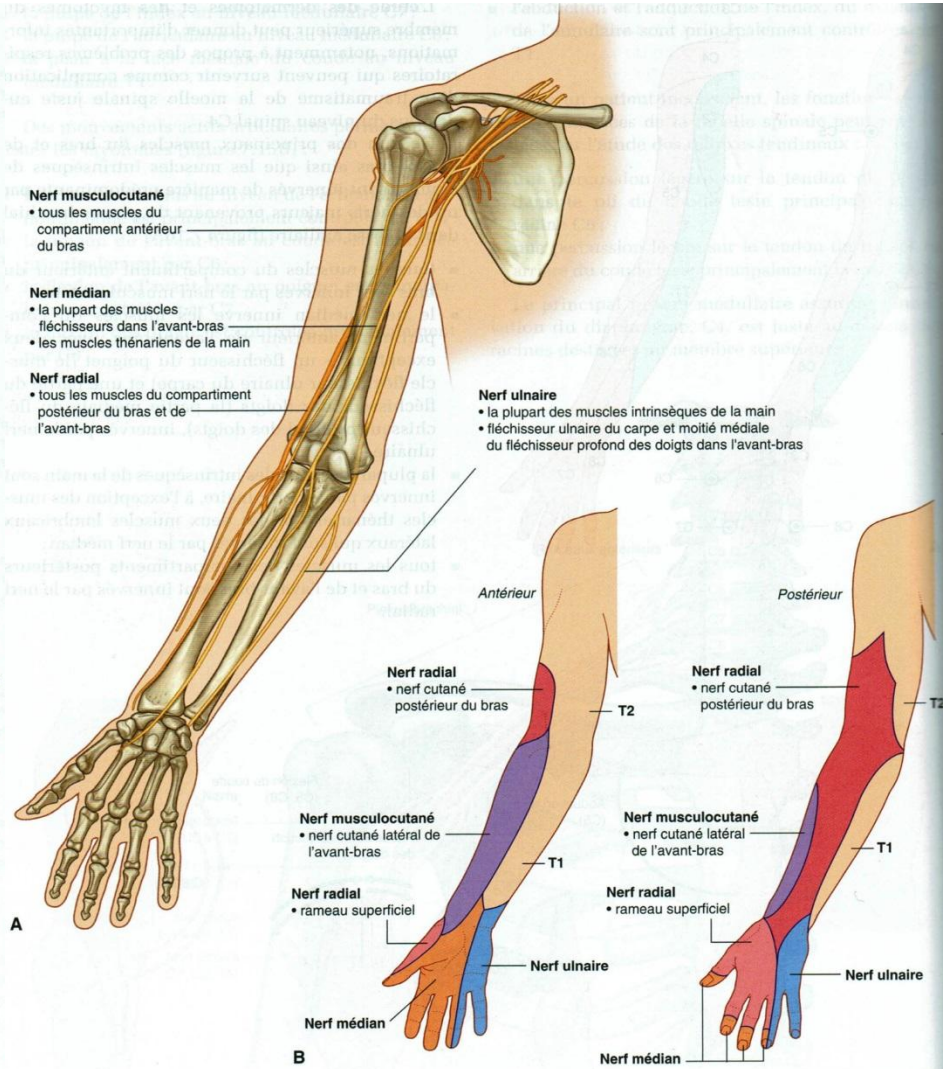
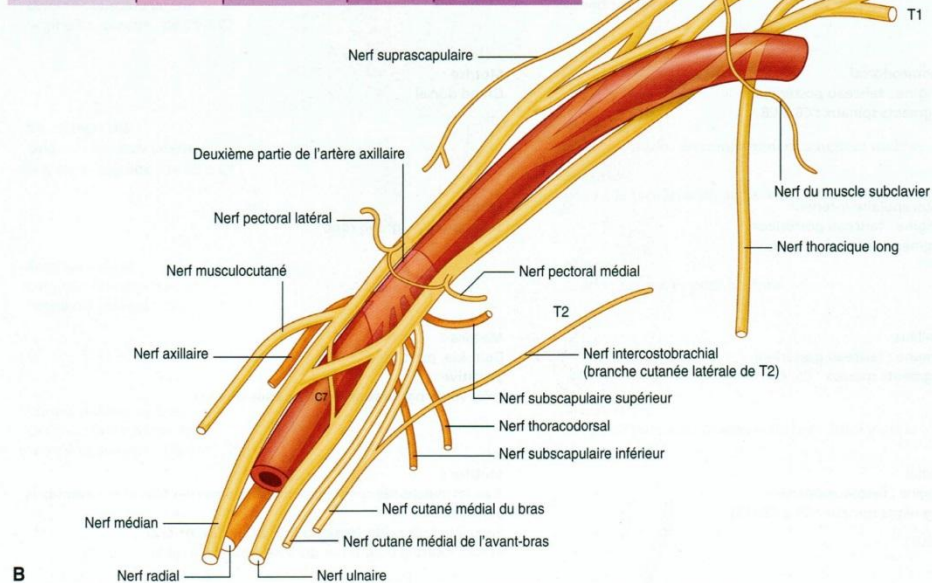
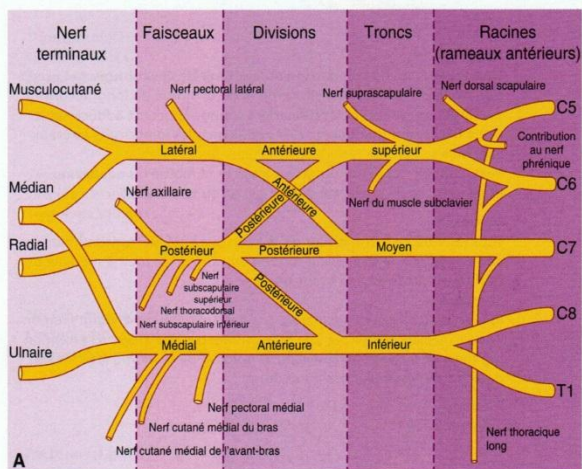


Figure 7.16. Nerfs du membre supérieur. **A.** Principaux nerfs du bras et de l'avant-bras. **B.** Régions cutanées antérieures et postérieures innervées par les principaux nerfs périphériques du bras et de l'avant-bras.

Remarques neuro – mbre sup dermatomes / mvts par myotomes

