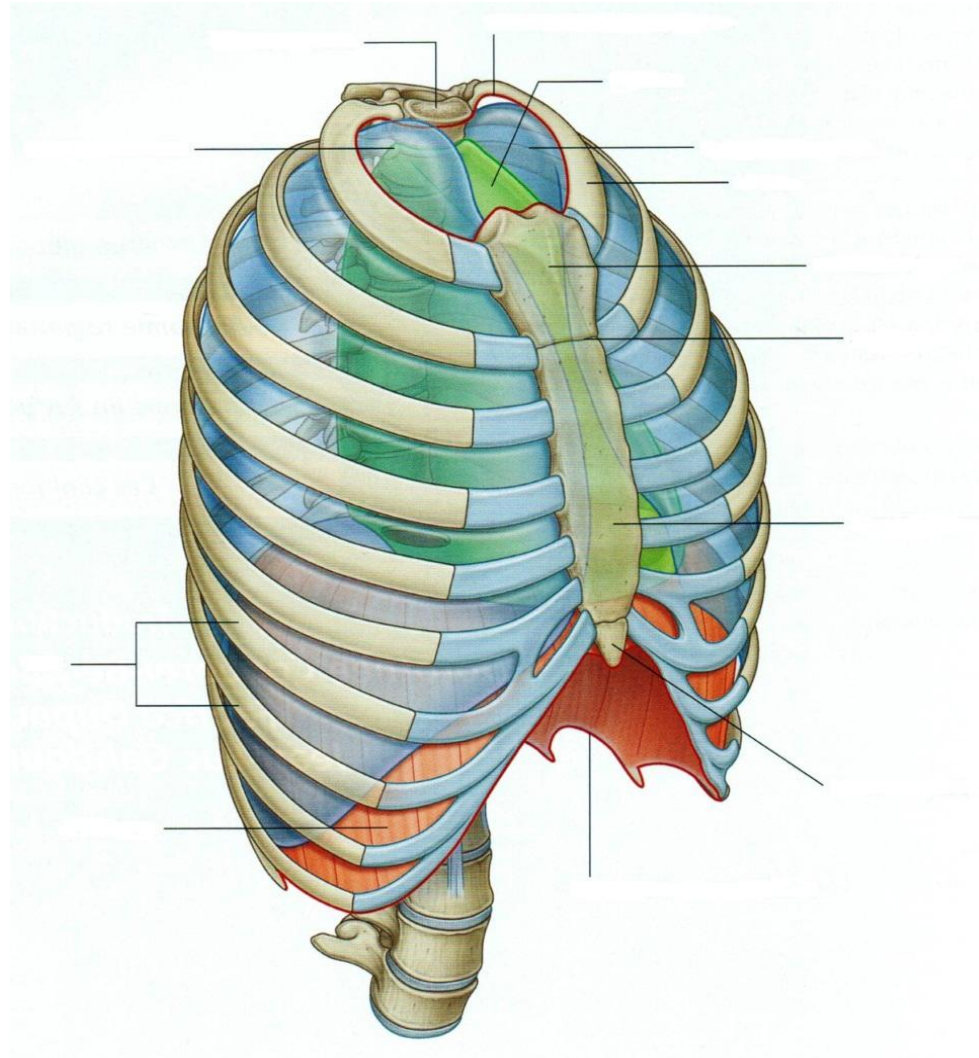


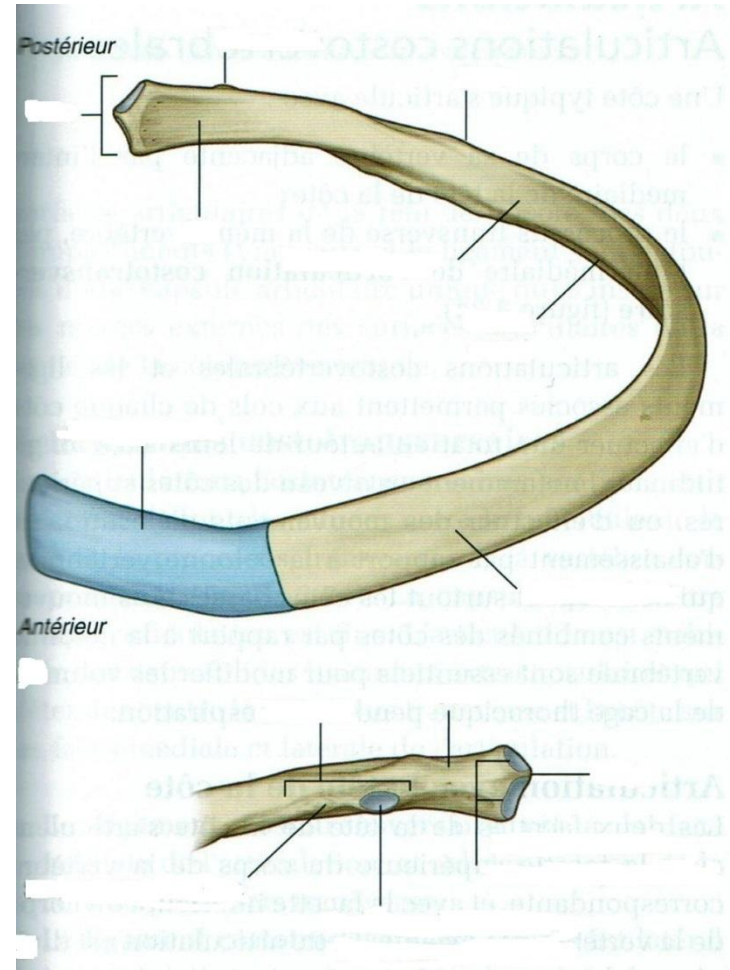
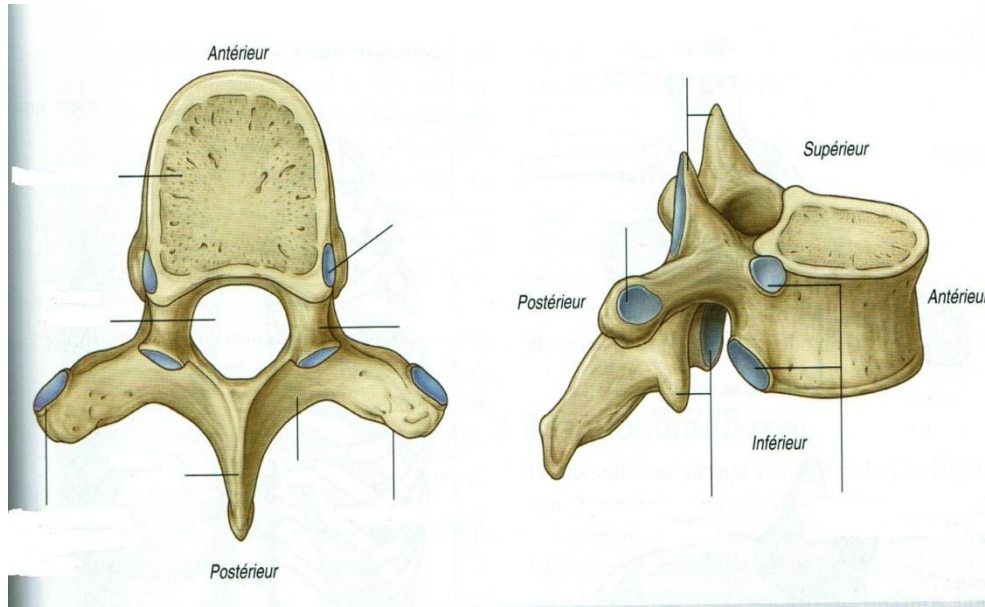
LE THORAX



Ostéologie

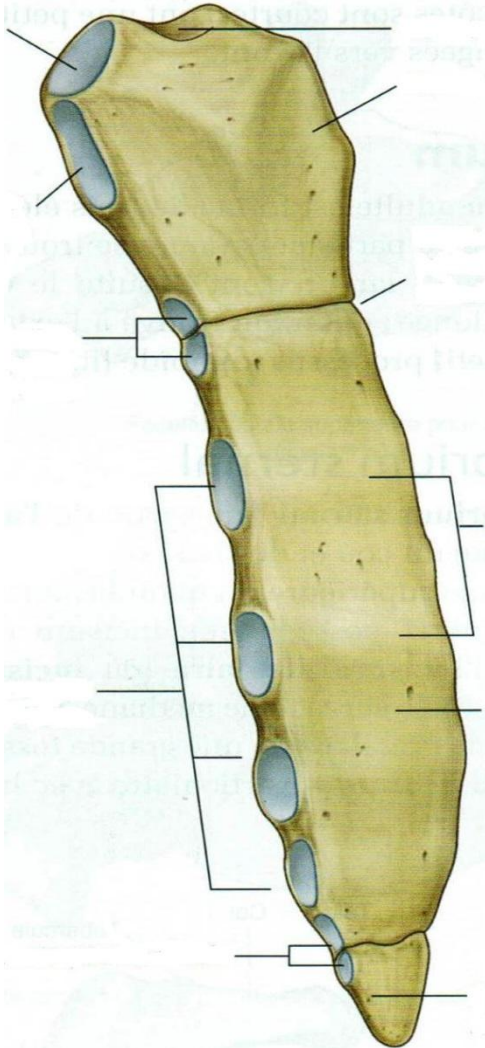
vert. thoracique (rappel)

cote typique

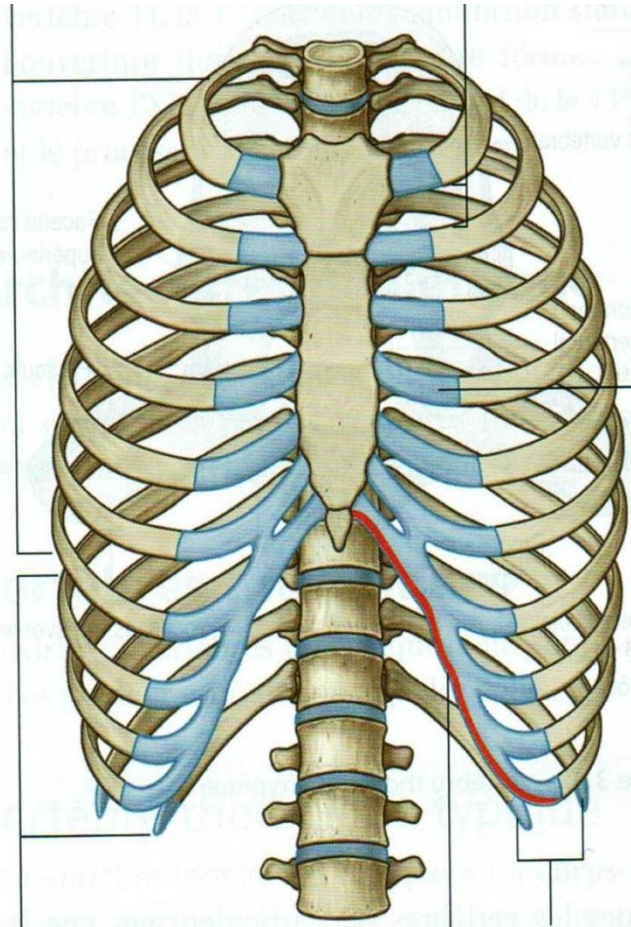


Ostéologie

sternum



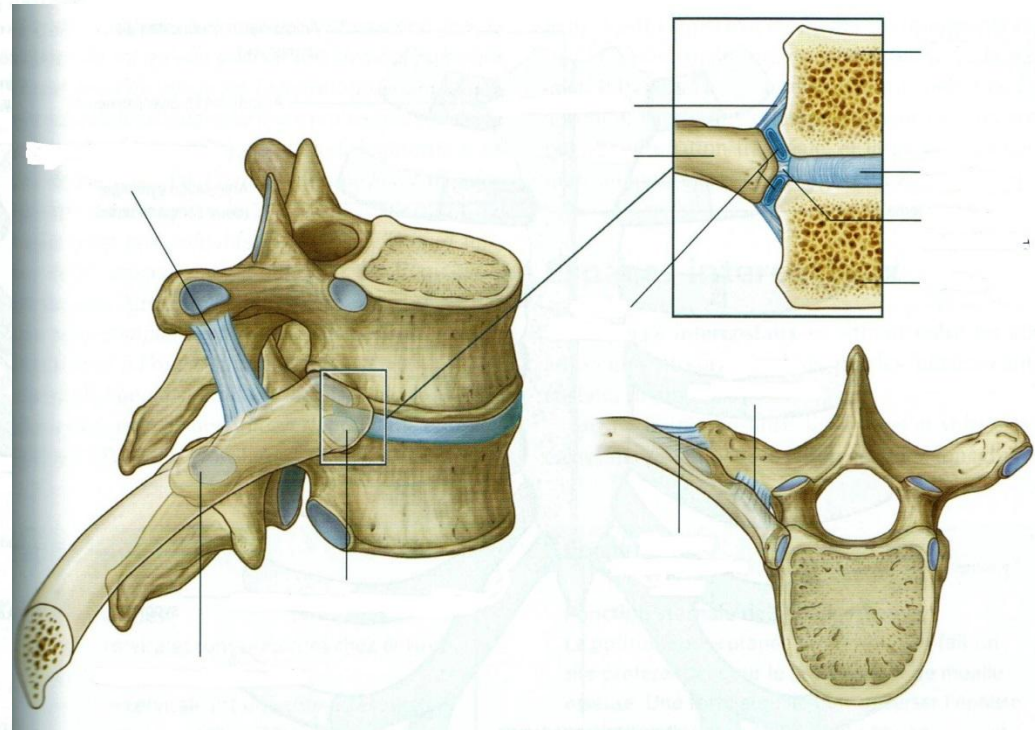
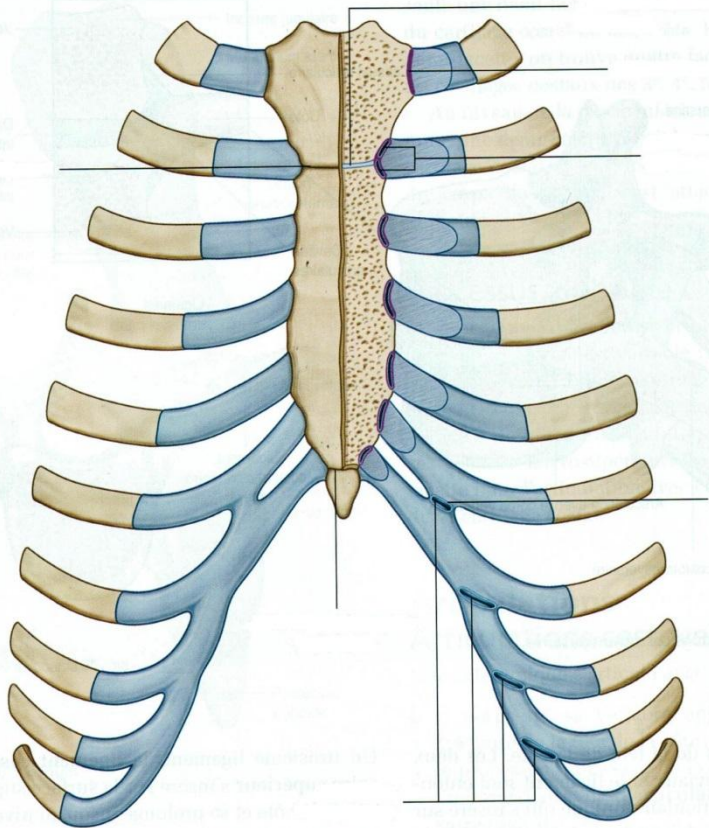
cotes et sternum



Arthrologie

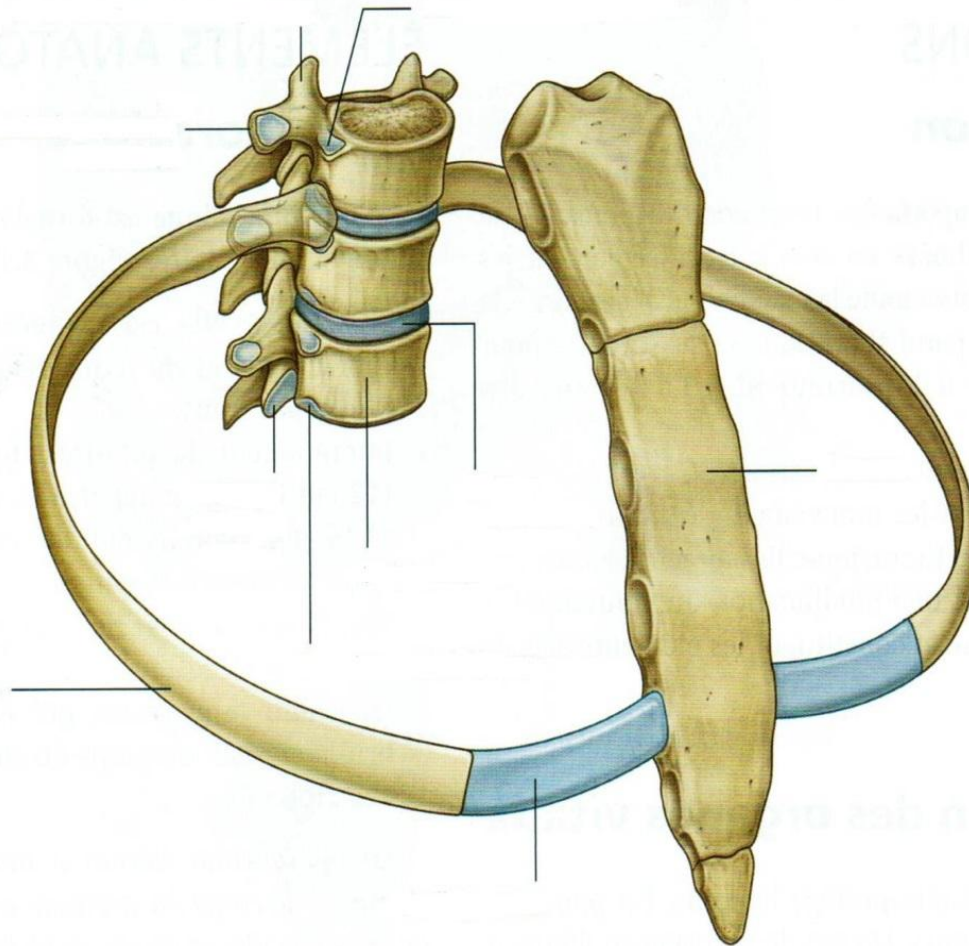
art° sterno-costales

art° costo-vertébrales



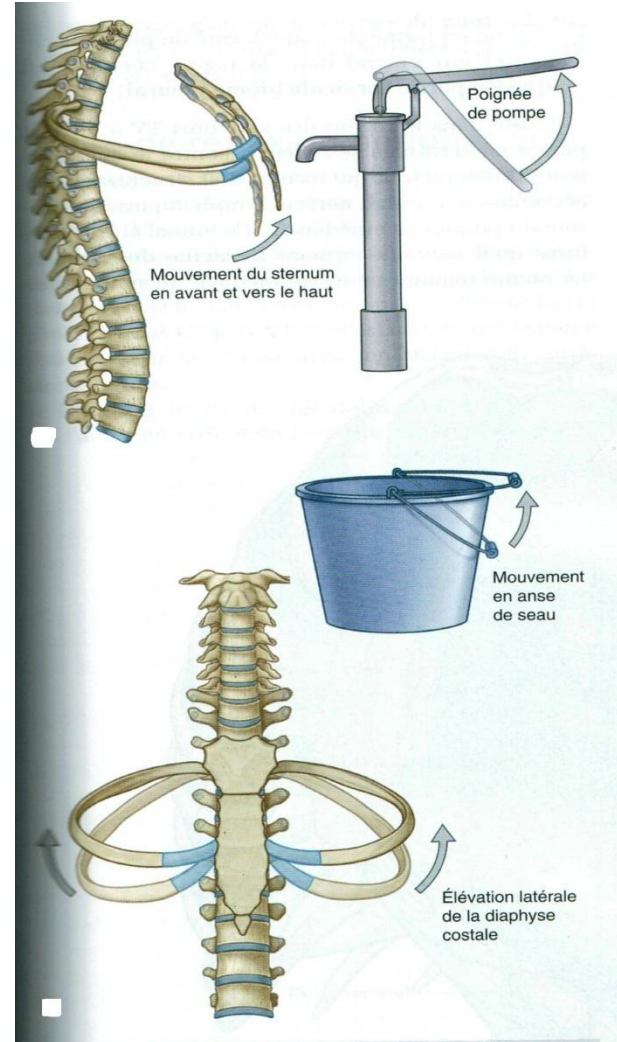
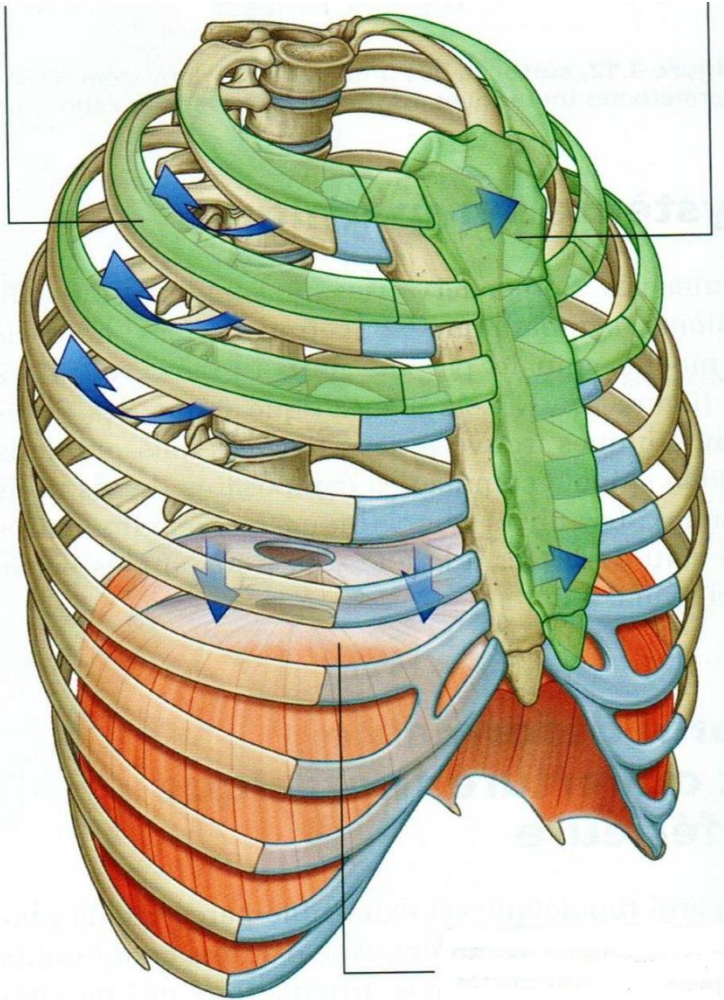
Arthrologie

vue globale



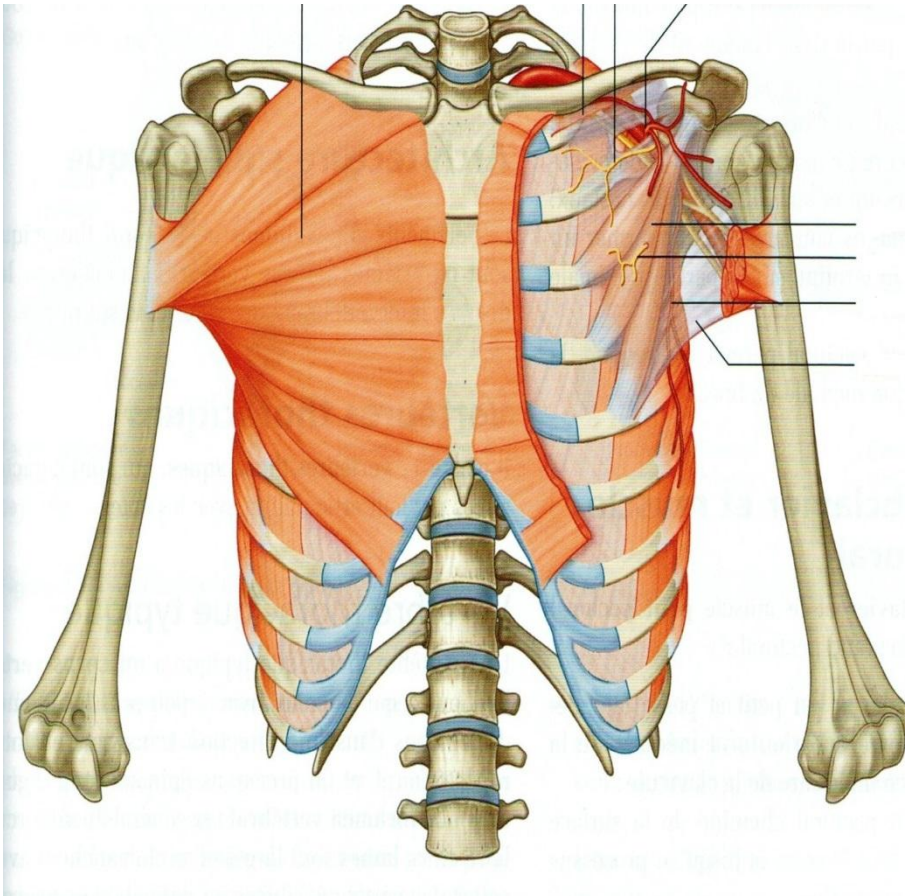
Arthrologie

mobilités costales

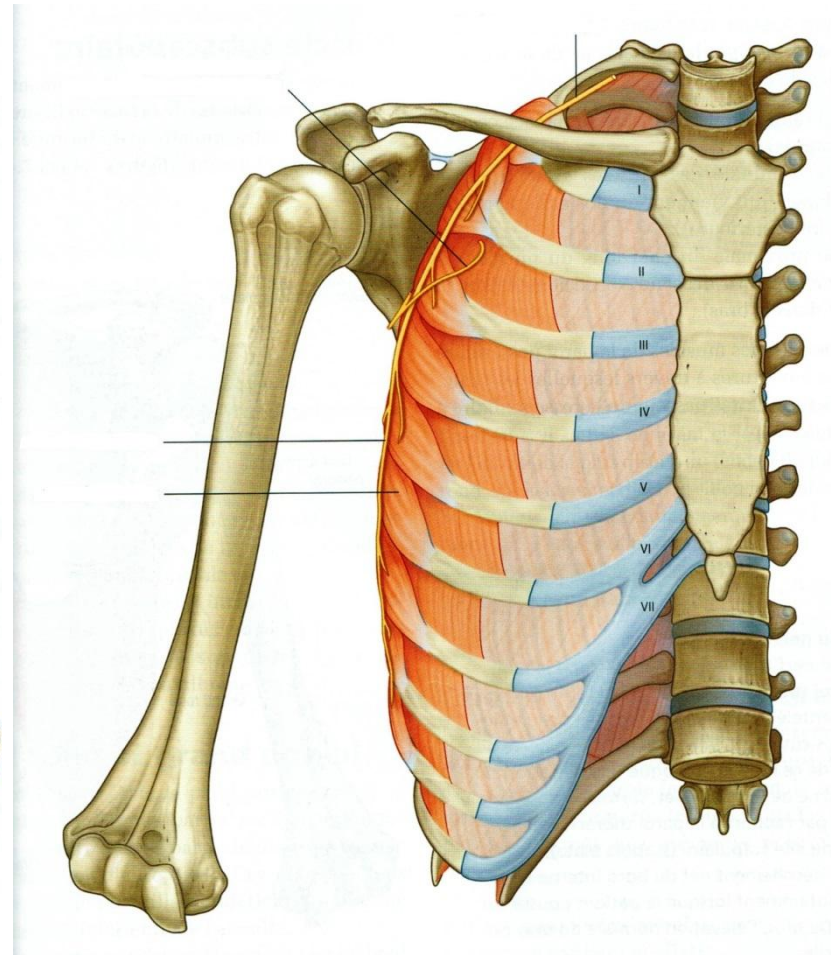


Myologie

région pectorale (rappel)

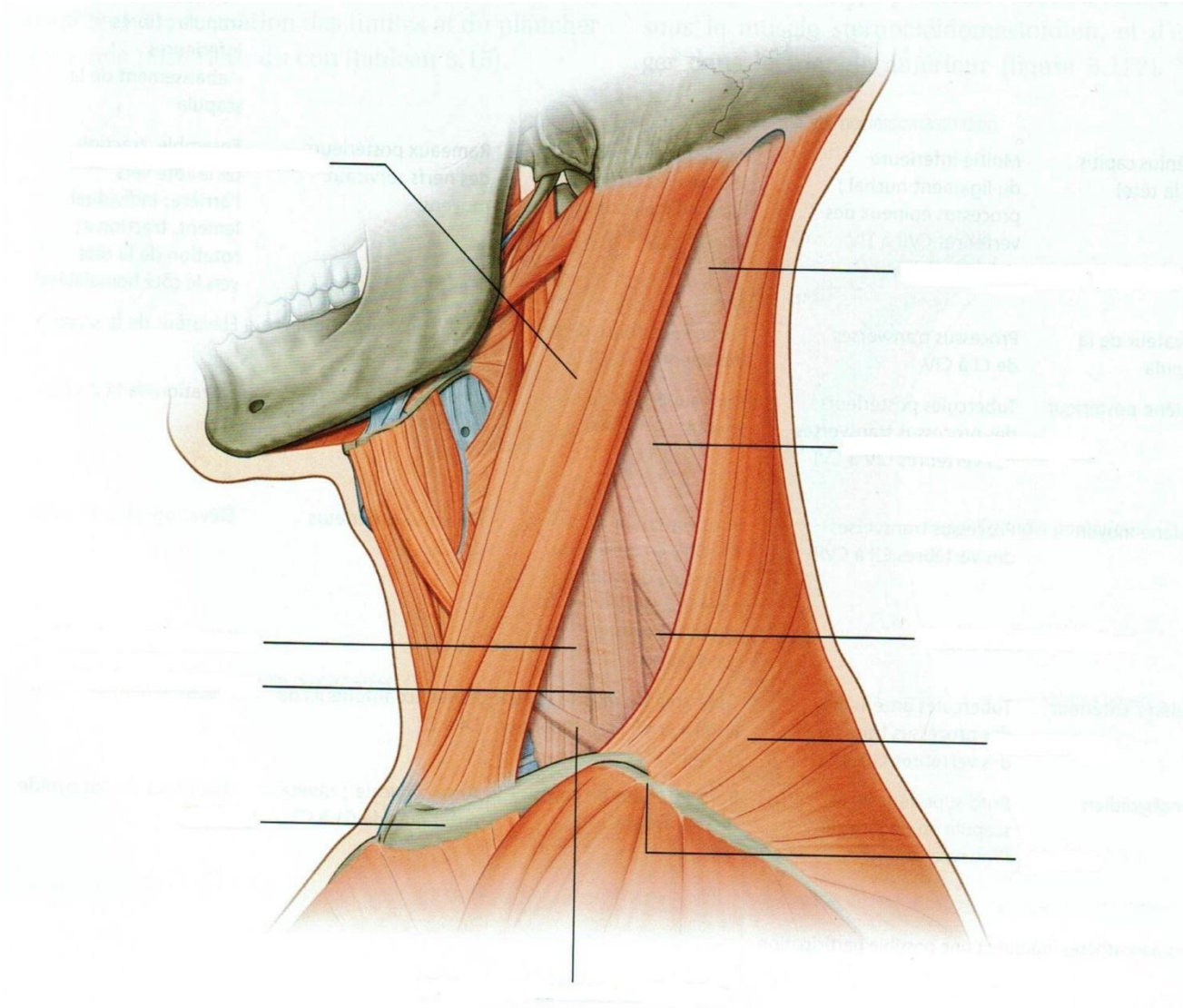


dentelé antérieur (rappel)



Myologie

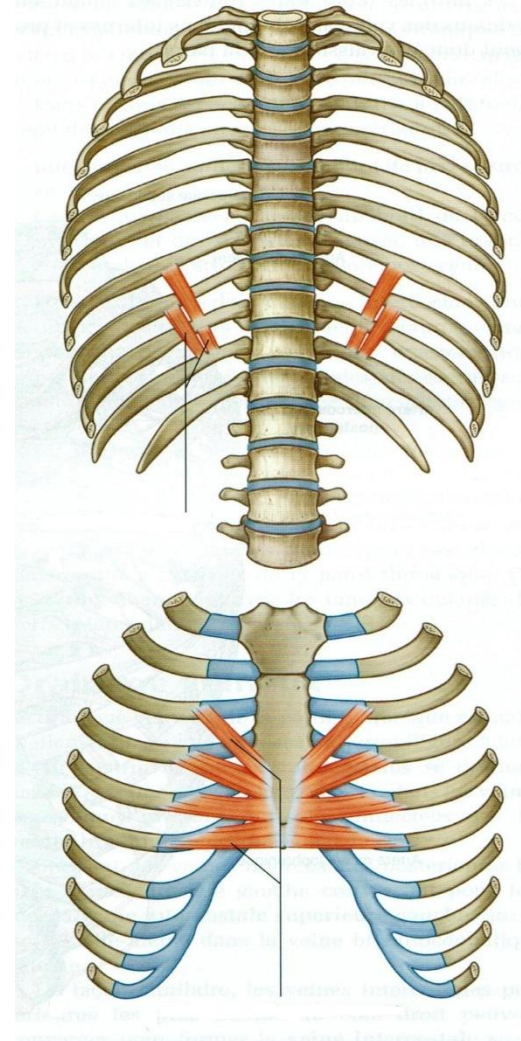
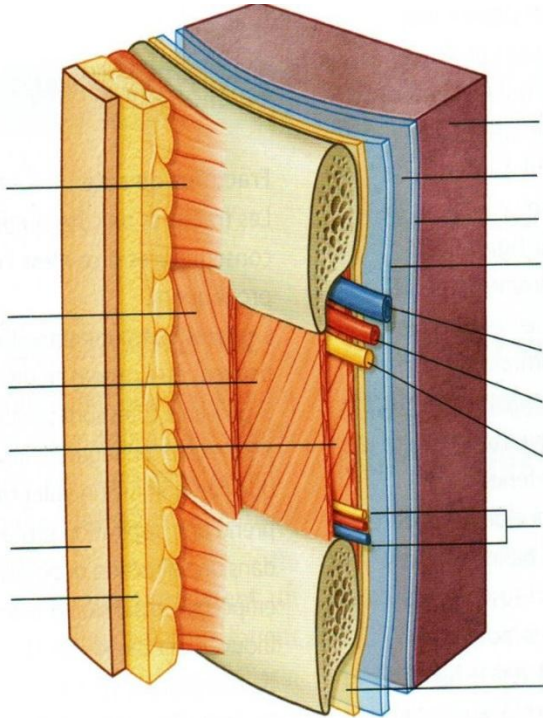
SCOM



Myologie

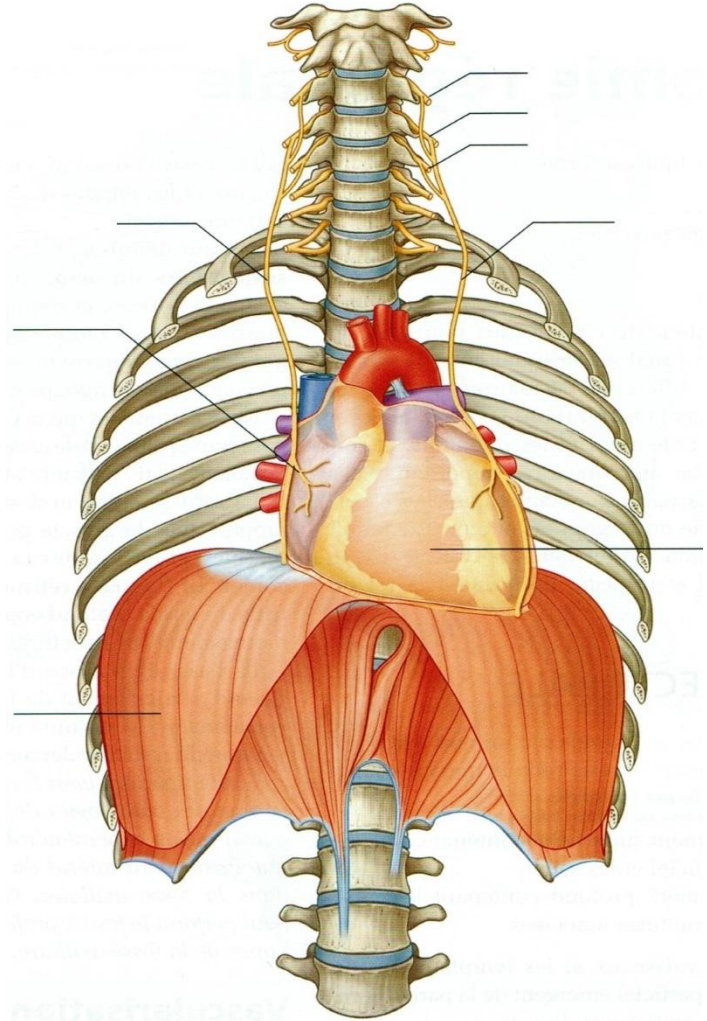
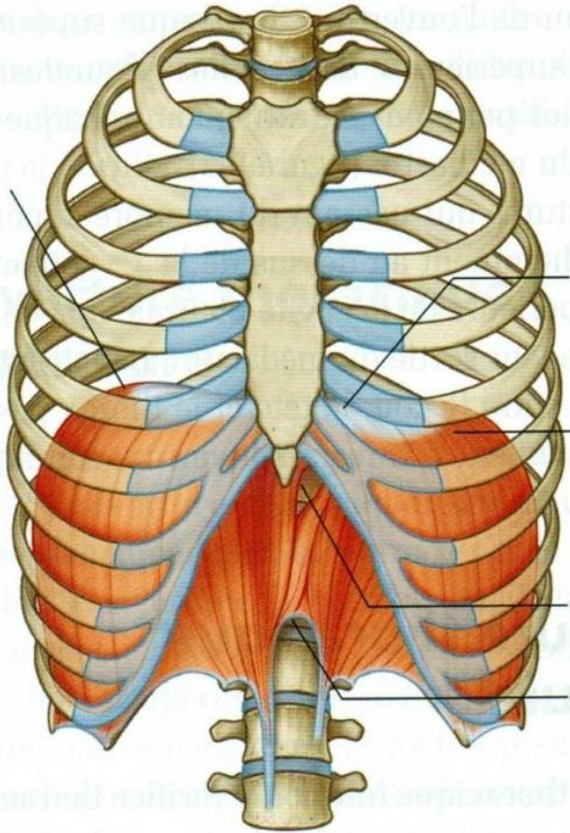
m.intercostaux

m.subcostaux - m.thoraciques transverses



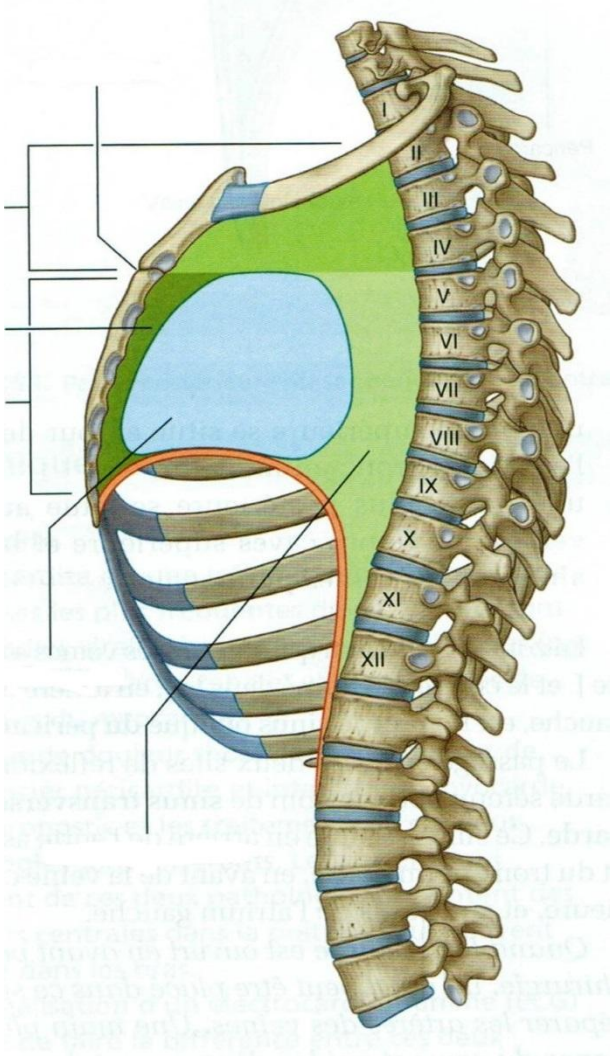
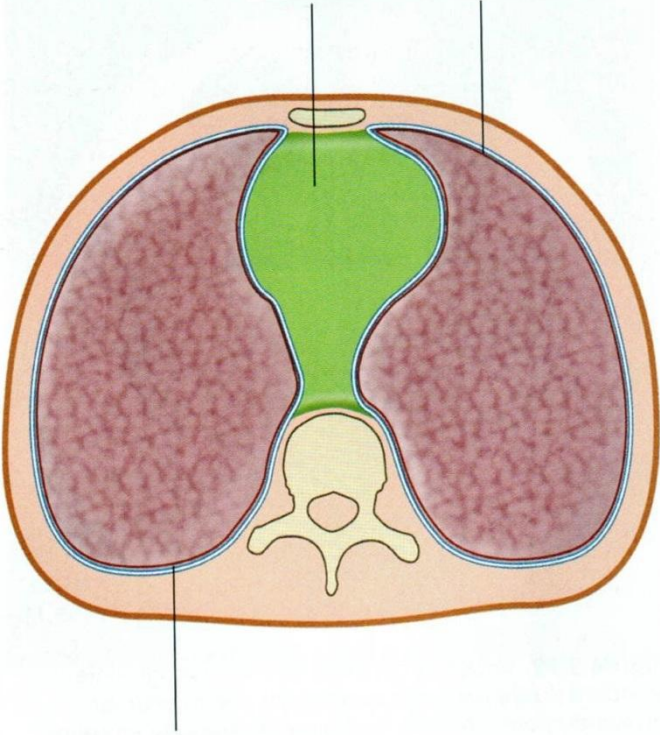
Myologie

diaphragme



Contenu thoracique

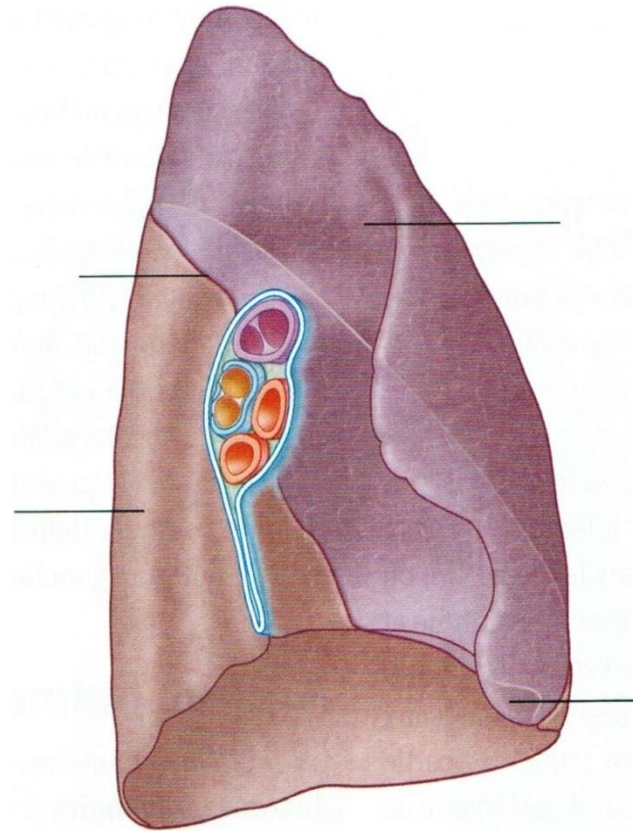
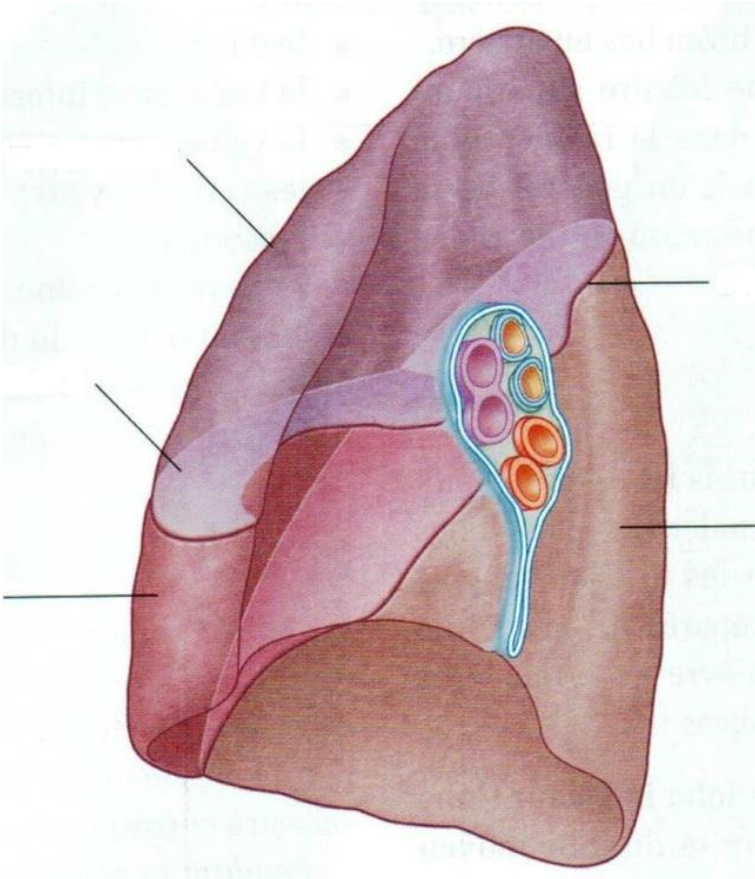
Médiastin



Contenu thoracique

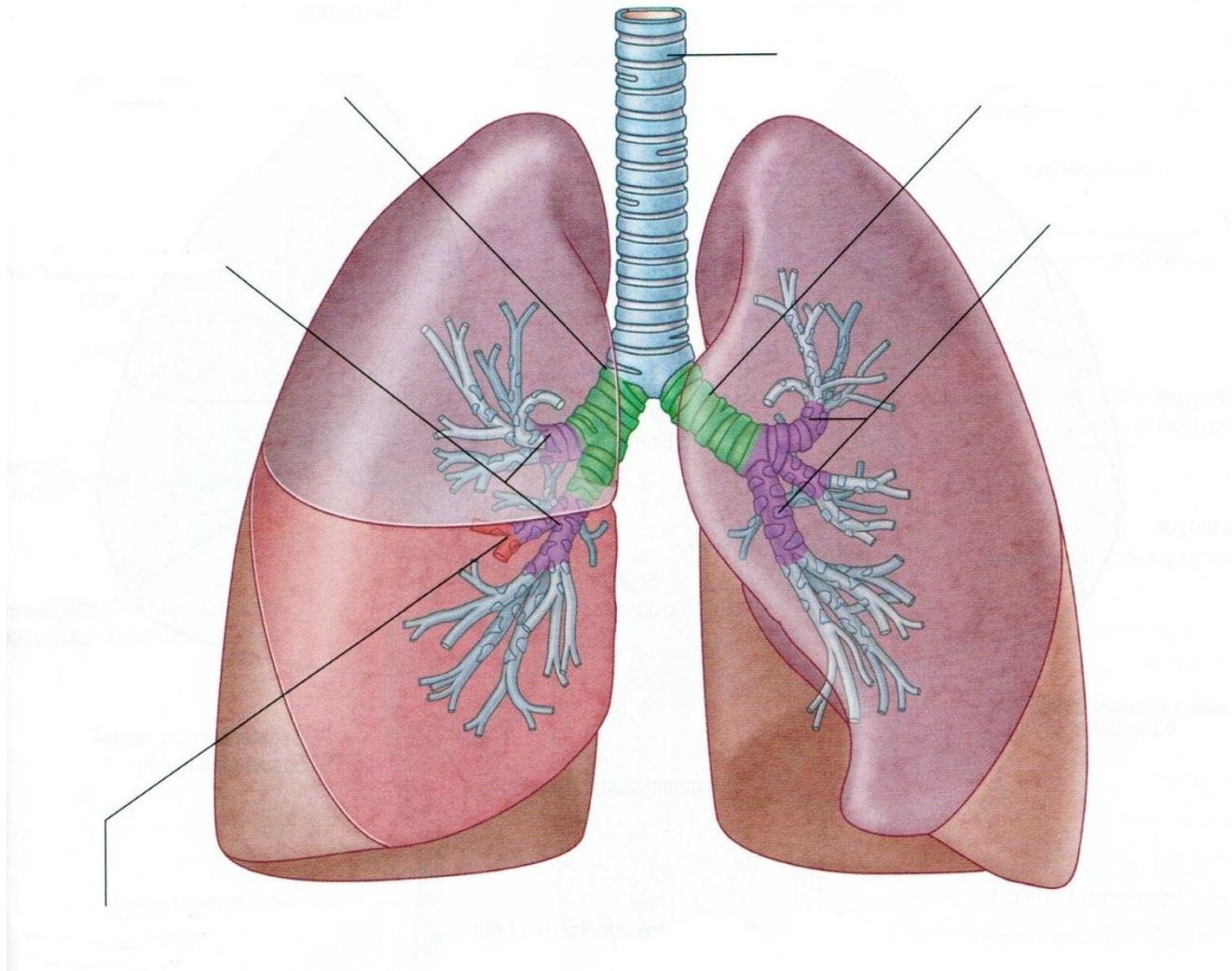
Poumon droit

Poumon gauche



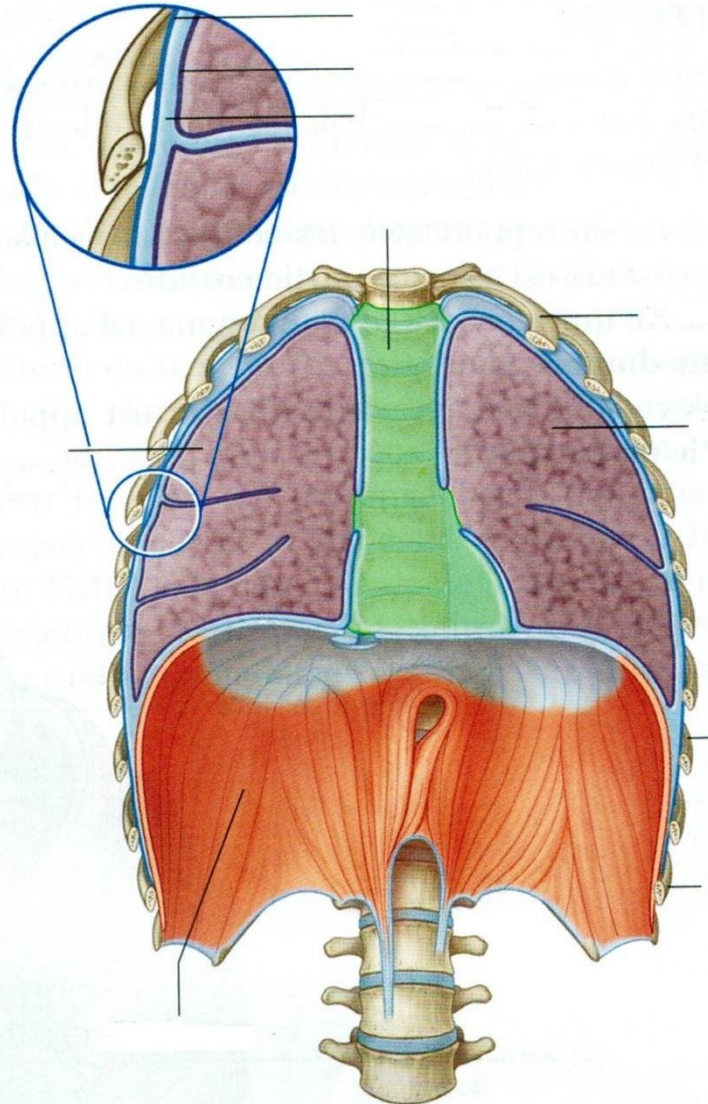
Contenu thoracique

Poumons



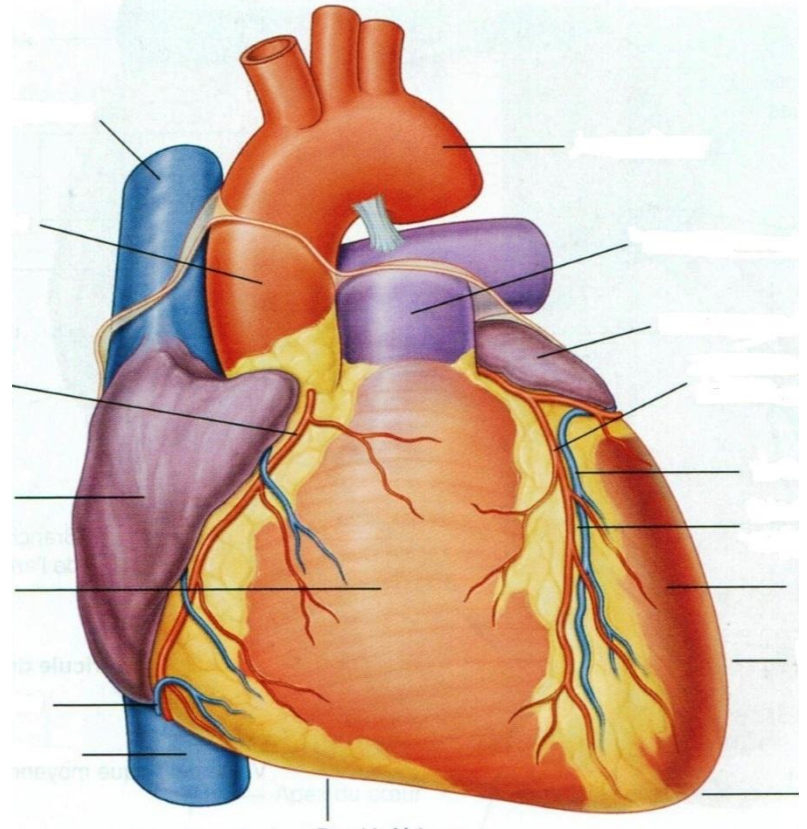
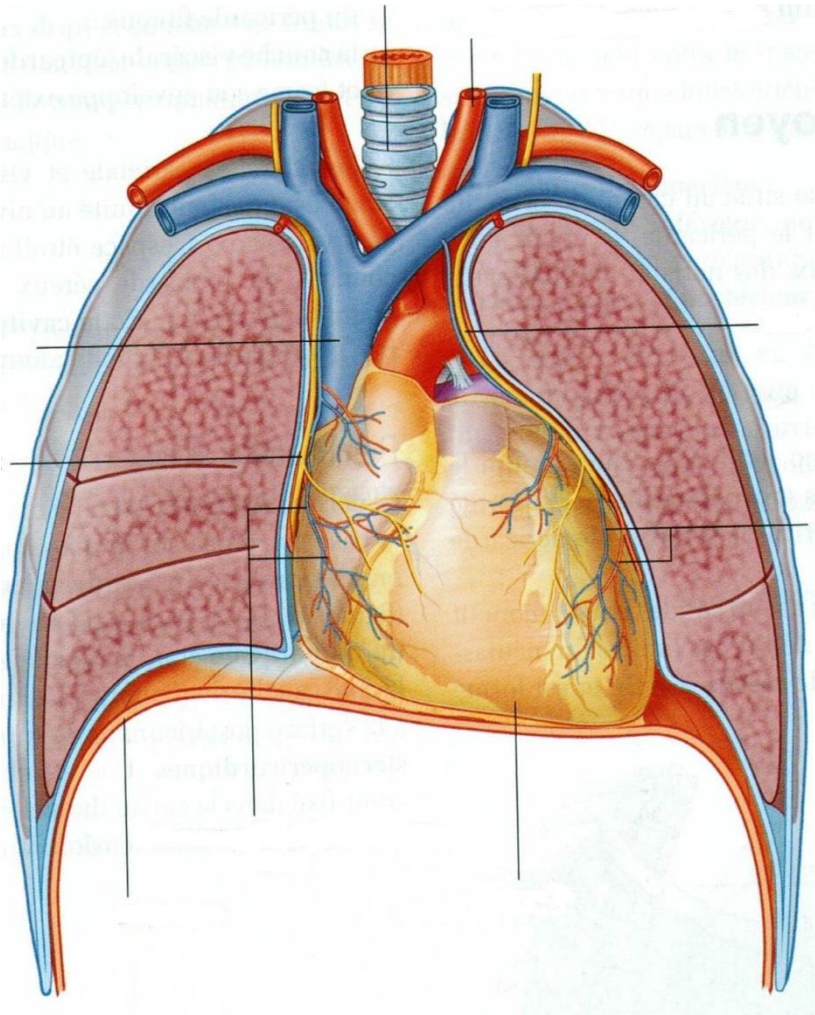
Contenu Thoracique

Plèvre



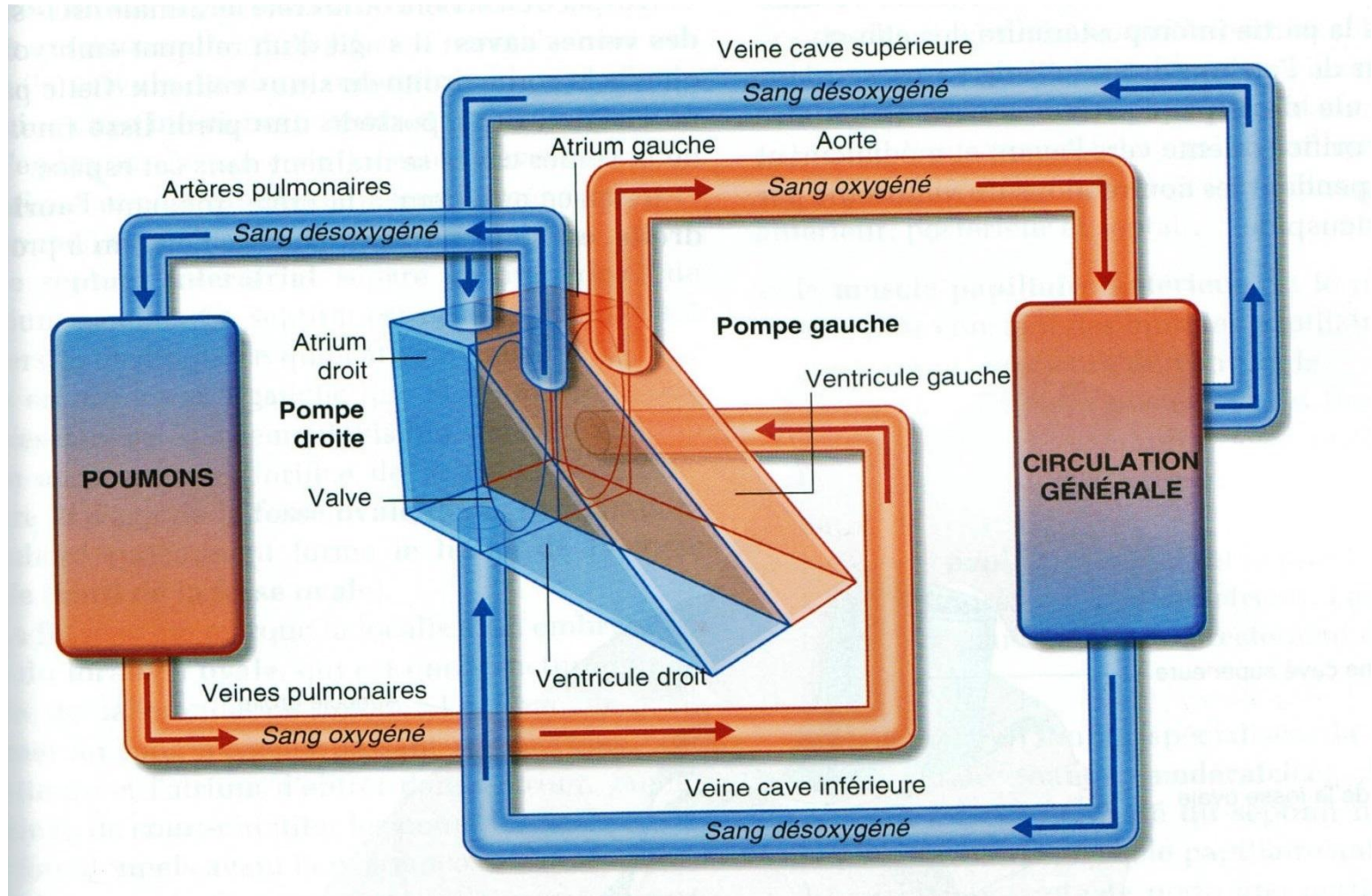
Contenu thoracique

Cœur , Péricarde et Gros vaisseaux



Rappel physiologique

circulation



Contenu thoracique

Œsophage - Trachée - Thymus

