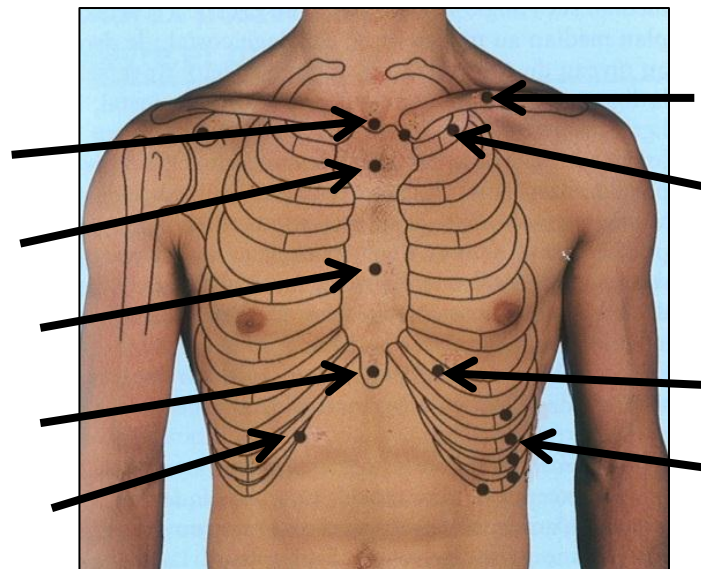
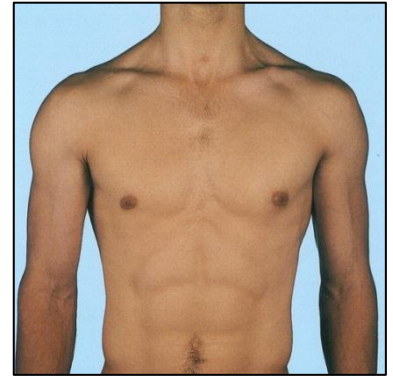
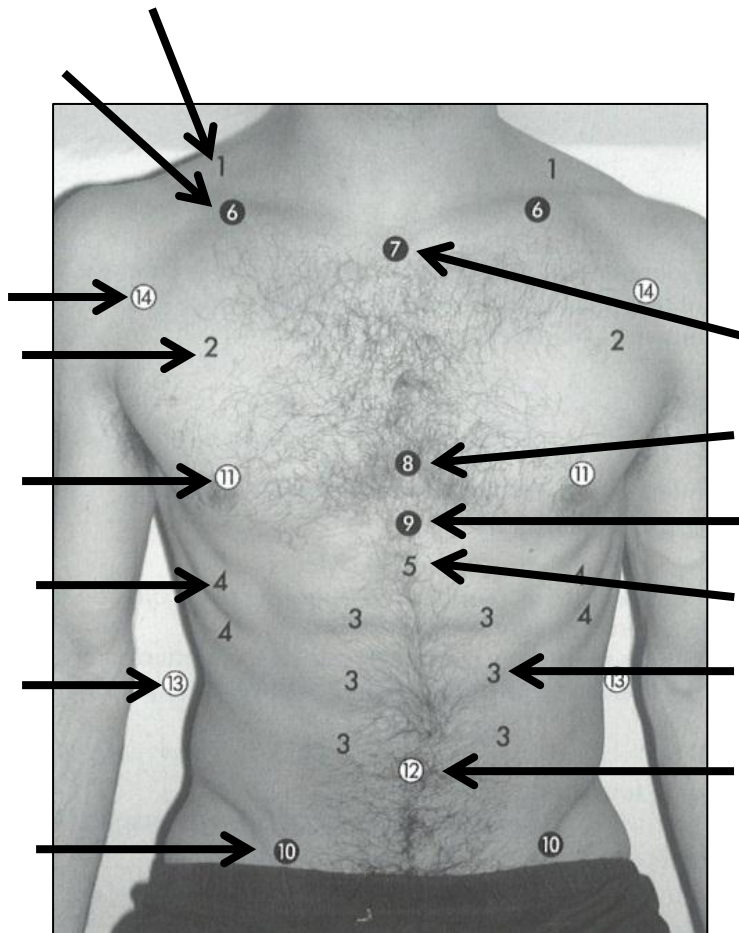
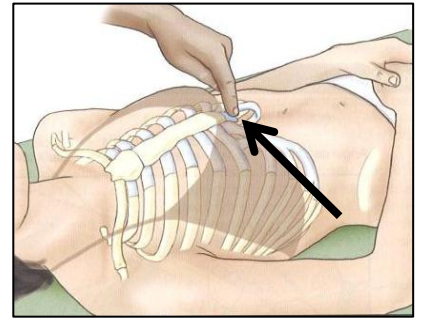
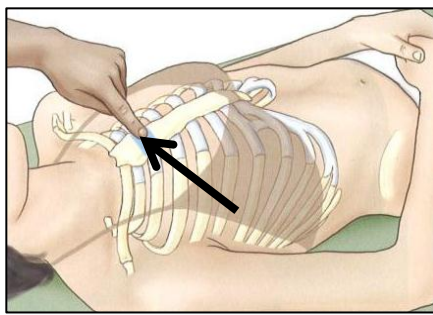
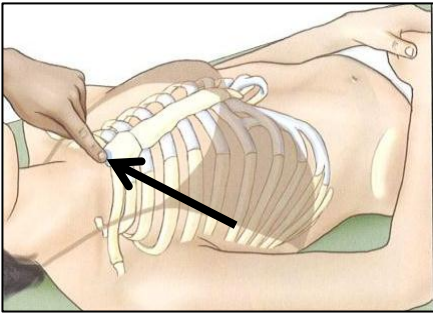


# *TD - Anatomie - Anatomie Fonctionnelle*

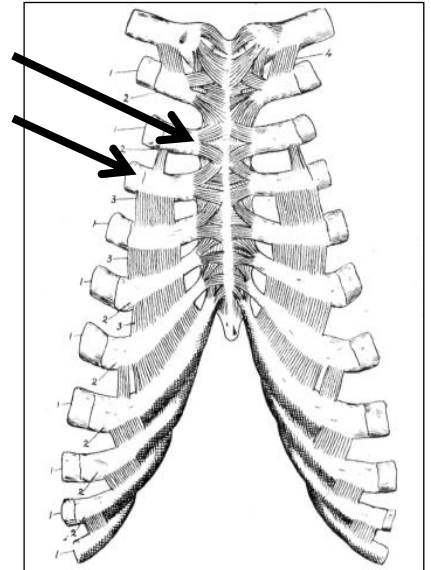
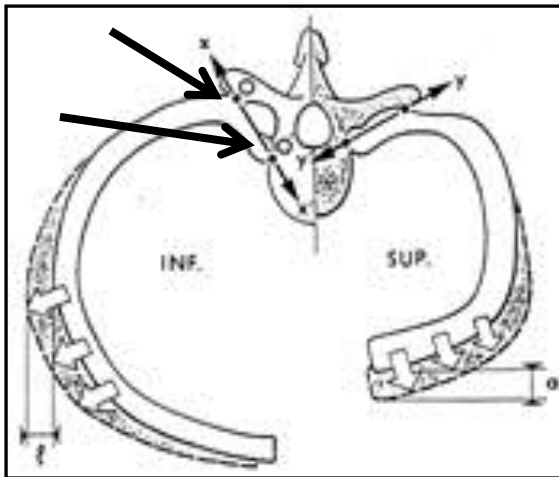
## TD12 - Thorax et Abdomen

### Repères morphologiques

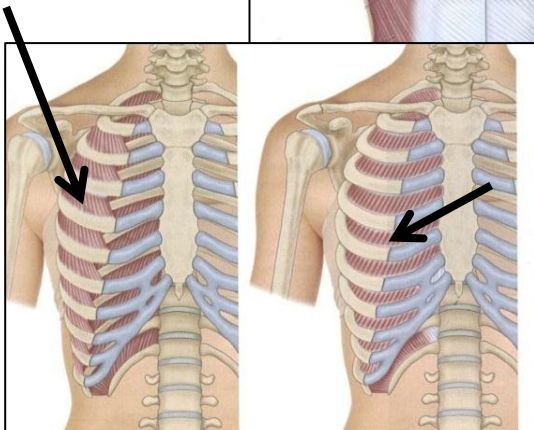
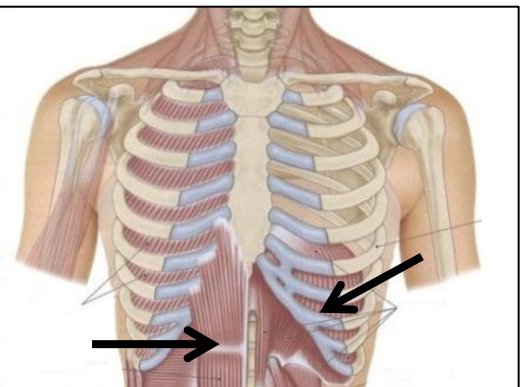
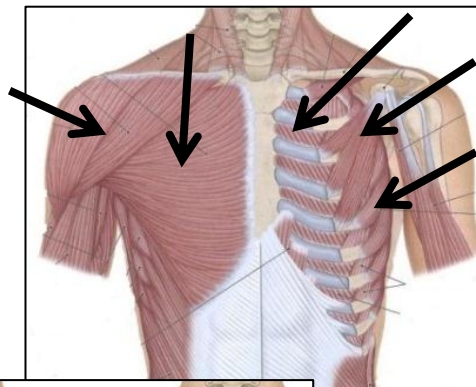




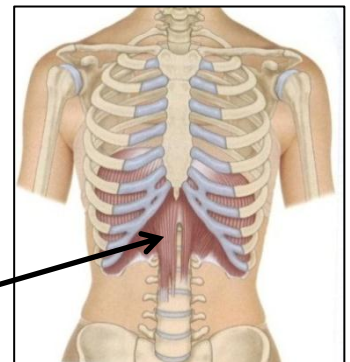
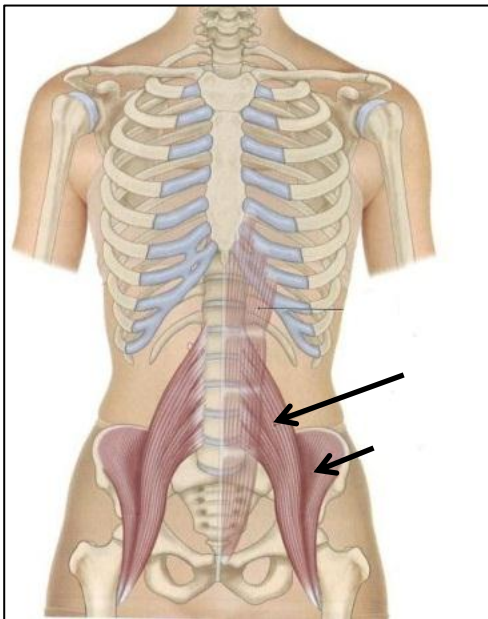
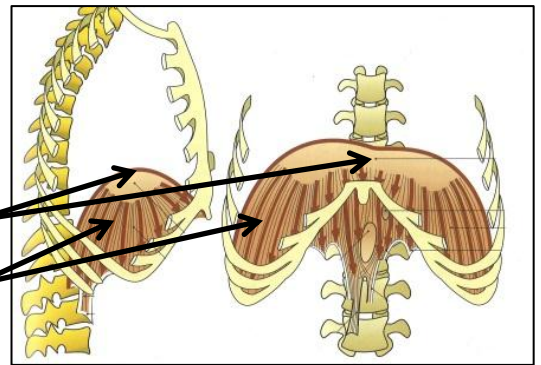
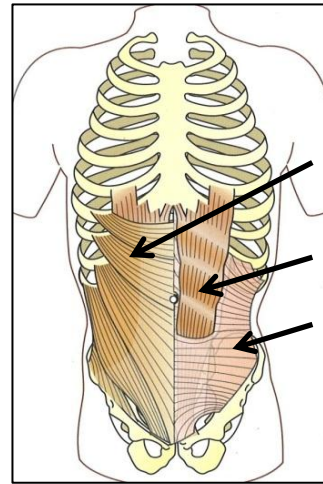
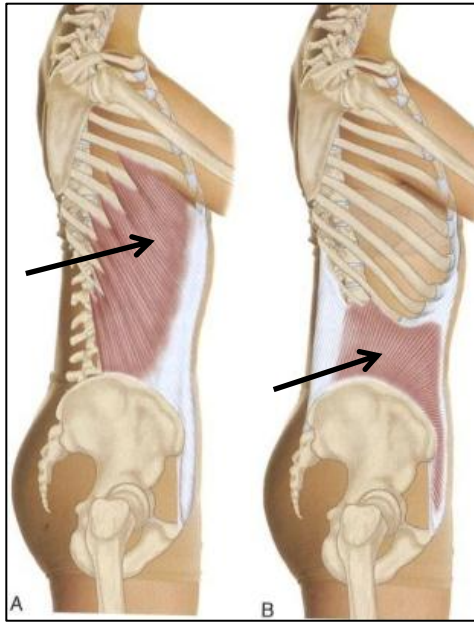
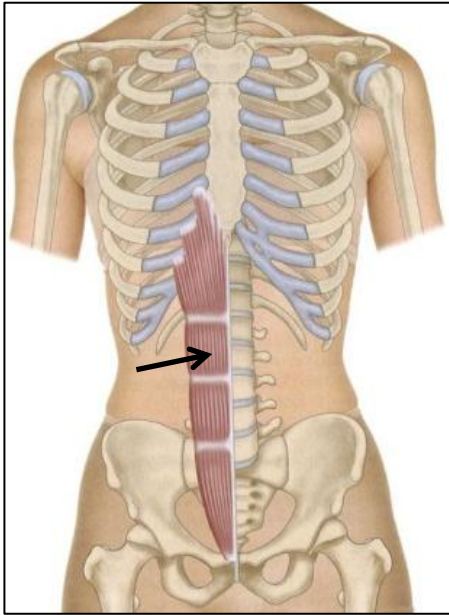
## Arthrologie



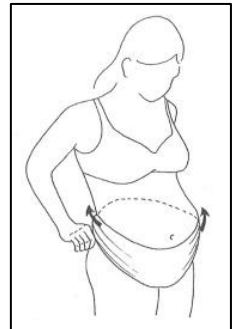
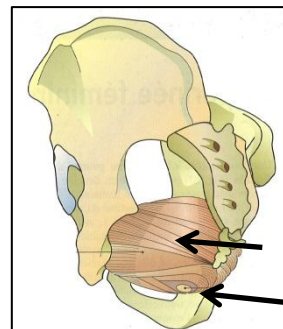
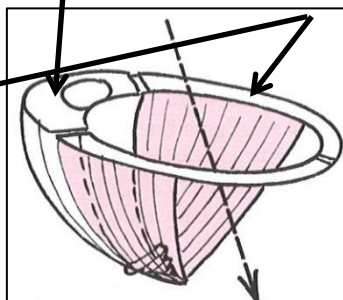
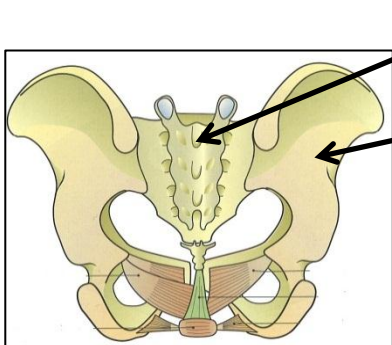
## Myologie - Tronc



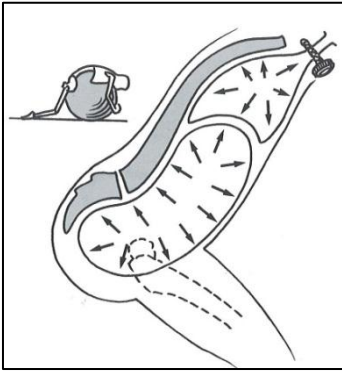
**Myologie - Abdomen**



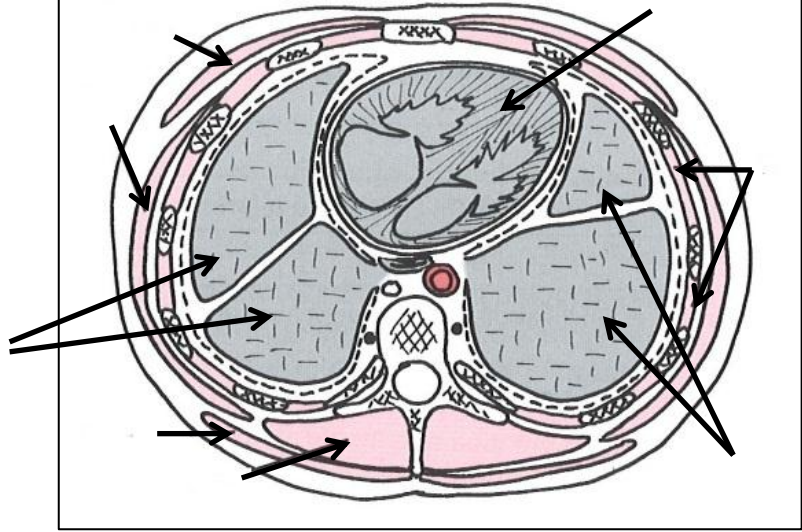
**Plancher Périnéal et anneau pelvien**



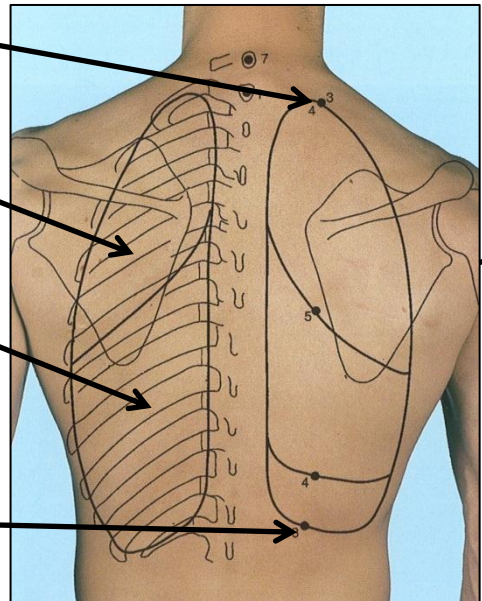
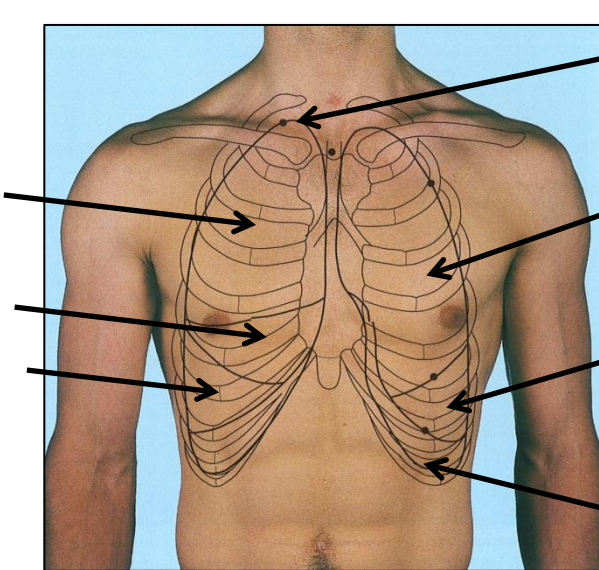
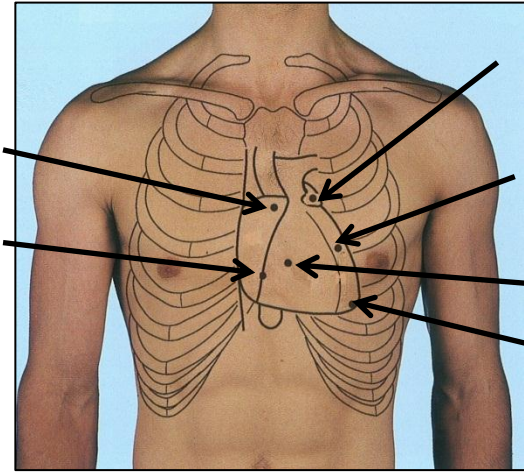
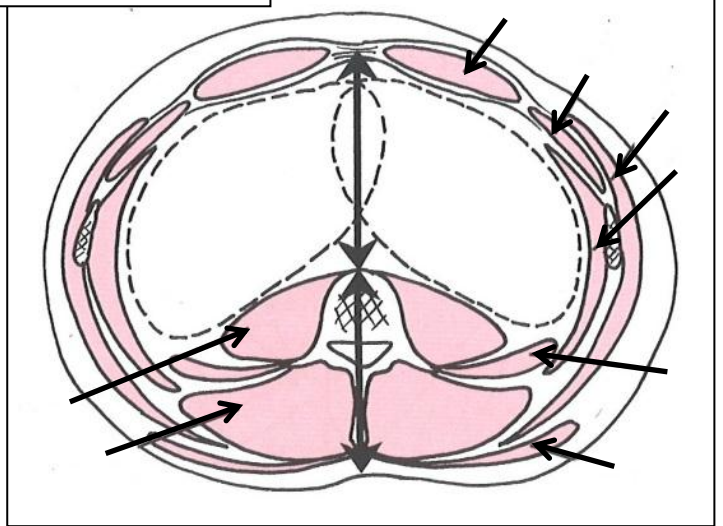
# Caisson Thoracique – Caisson Abdominal



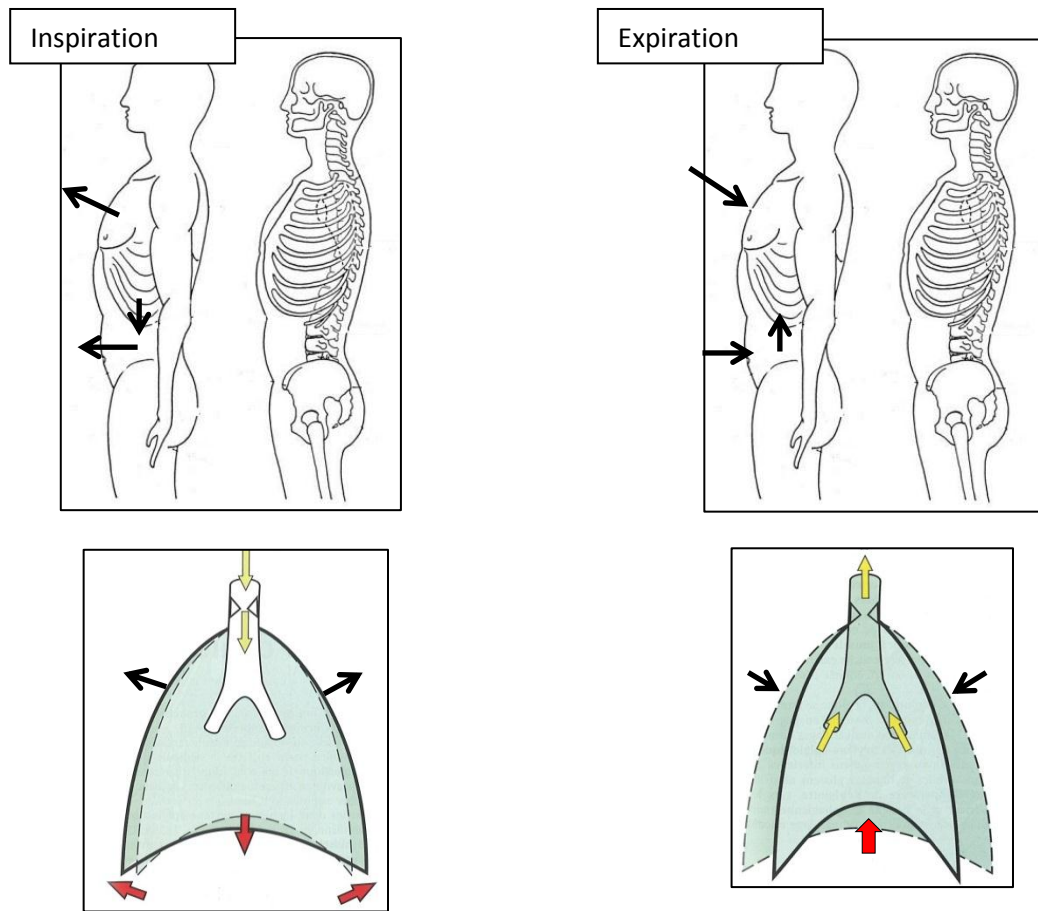
Caisson thoracique



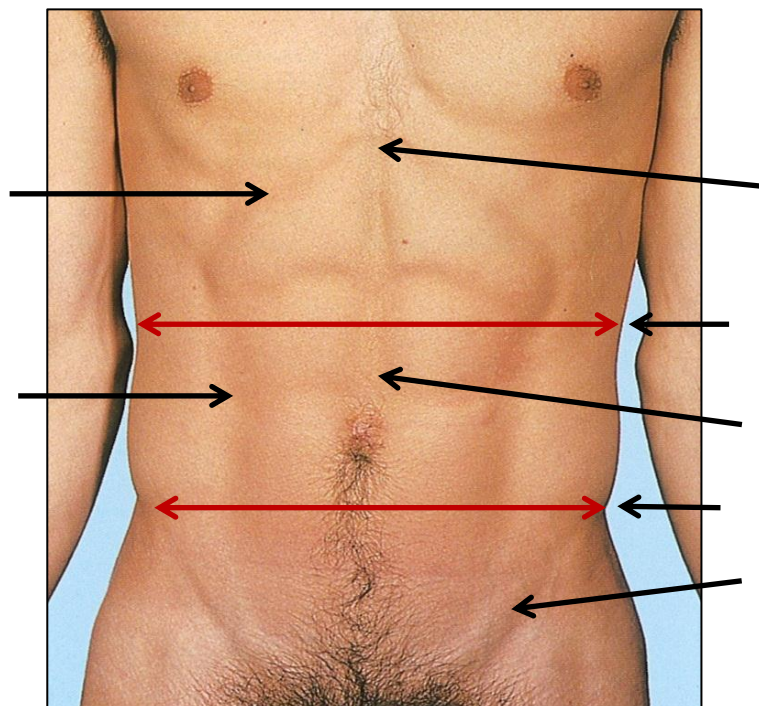
Caisson abdominal



## Mécanique ventilatoire



## Repères morphologiques paroi abdominale



Zones de l'abdomen et Viscères – Damier de Sigaud

